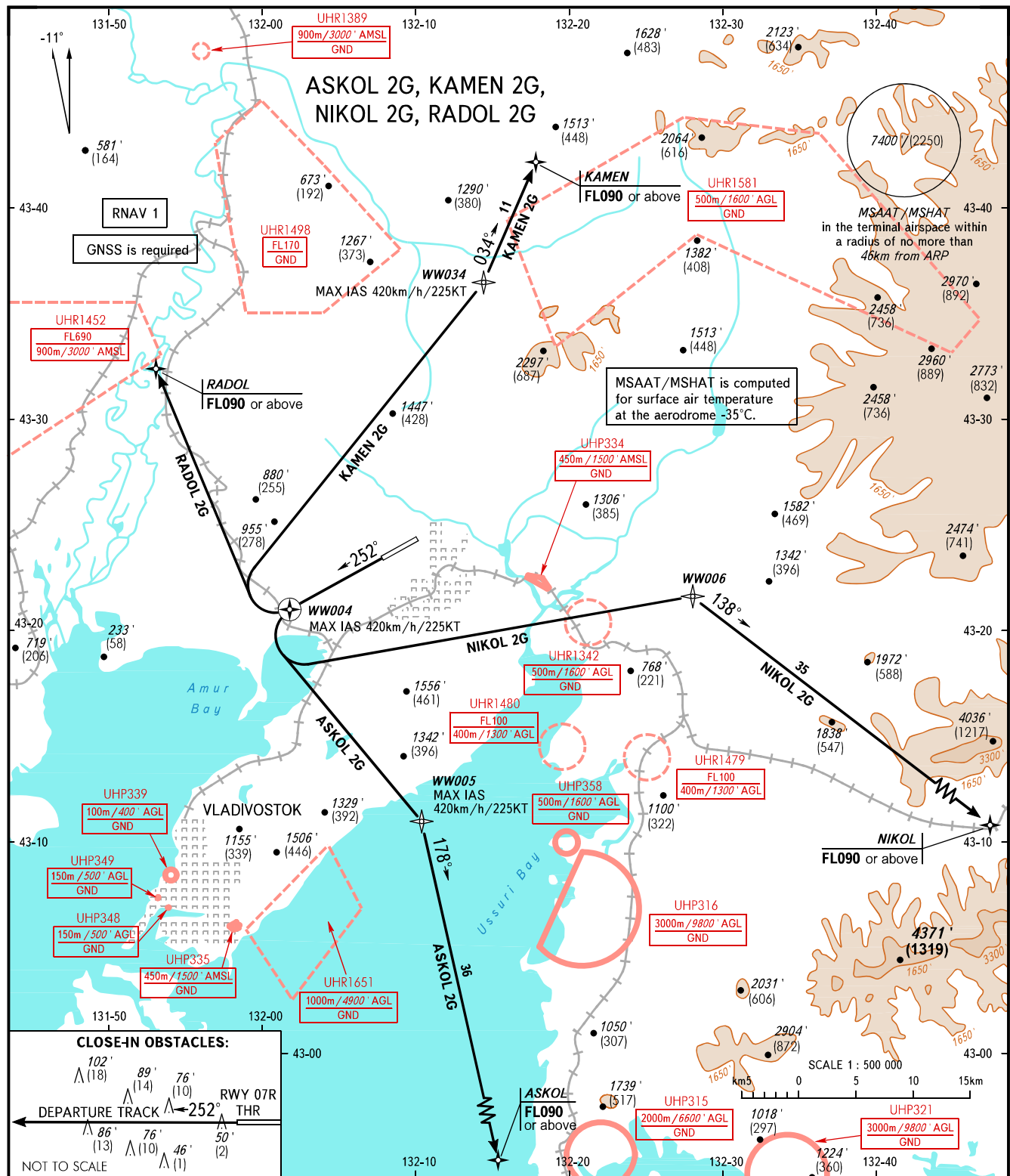


STANDARD DEPARTURE CHART  
INSTRUMENT (SID) - ICAO

TRANSITION ALT: **8000'**  
TRANSITION HGT: **(2430)**

VLADIVOSTOK, RUSSIA  
KNEVICH  
RNAV RWY 25L



**CLOSE-IN OBSTACLES:**

102' (18)	89' (14)	76' (10)	
RWY 07R			
86' (13)	76' (10)	46' (1)	50' (2)

DEPARTURE TRACK ← 252° THR

NOT TO SCALE

VLADIVOSTOK START **119.500**  
VLADIVOSTOK RADAR **123.400**

BEARINGS AND TRACKS ARE MAGNETIC  
ALTITUDES IN **FEET**  
HEIGHTS IN METRES  
ELEVATIONS IN **FEET** AND METRES  
DISTANCES IN KILOMETRES

Alt set: -QNH(QFE on req);  
-hPa(mm on req).

MINIMUM CLIMB GRADIENT (due to obstacles):  
**NIKOL 2G:** 3.6% up to 1500'/(445);

MINIMUM CLIMB GRADIENTS (due to airspace structure):  
**ASKOL 2G:** 6.0% up to 6000'/(1820);  
**KAMEN 2G:** 4.4% up to FL090;  
**NIKOL 2G:** 3.5% up to 6000'/(1820);  
**RADOL 2G:** 7.6% up to FL090.

**WARNING**  
Close-in obstacles are AVBL.