

STANDARD DEPARTURE CHART
INSTRUMENT (SID) - ICAO

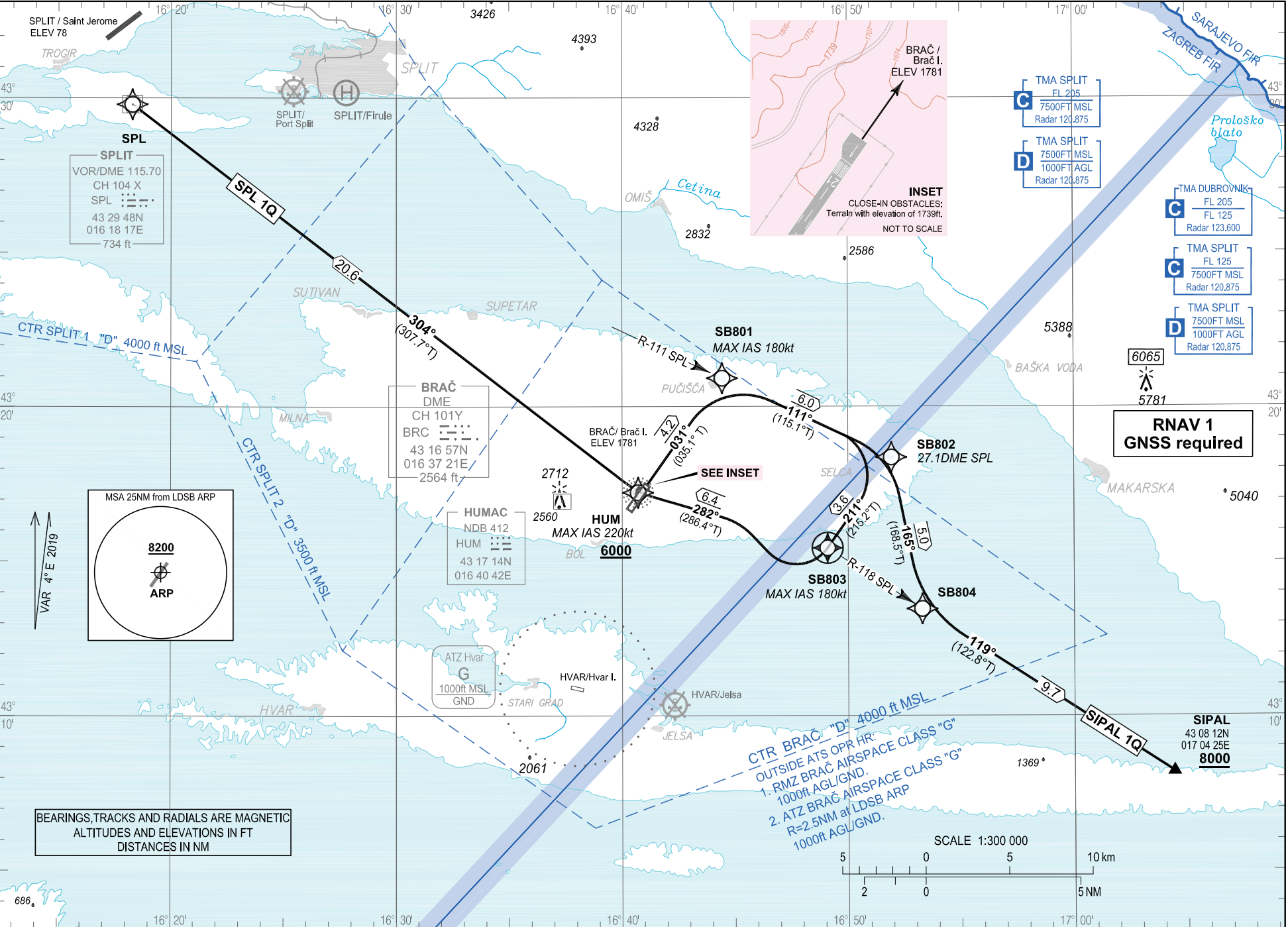
TRANSITION ALTITUDE
10 000

BRAČ TOWER 118.025
SPLIT RADAR 120.875

SPL 1Q SIPAL 1Q

BRAČ / Brač I. (LDSB)
RNAV RWY 03

CHANGE: RMZ Brač added; ATZ Brač added; PBN box updated; Airport name Split/Kaštela to Split/Saint Jerome; Obstacles updated; Heliport Split/Firule added; Split/Resnik Water aerodrome removed; Editorial.



BRAČ / Brač I. (LDSB)

RNAV RWY 03

SPL 1Q SIPAL 1Q

GENERAL INFORMATION AND REQUIREMENTS FOR ALL SIDs

Calculation of the SIDs is based on an all-engines operative minimum net climb gradient of 3.3 per cent (201 FT/NM). Where a greater climb gradient for a specific SID (or part of SID) is necessary this is indicated in the tabular description of the route.

CAUTION regarding close-in obstacle: terrain with elevation of 530m (1739ft) on lateral distance of approximately 150m (0.08NM) NorthWest and abeam of the departure end of the RWY03 (See inset on the SID RNAV RWY03 chart).

WARNING

Back-up conventional (NON-RNAV) procedure, in case of loss of RNAV 1 capability or RNAV system failure, below minimum radar vectoring altitude for RNAV SID SPL 1Q only:

Climb straight ahead to intercept and follow R-111 SPL. At 27.1 DME SPL turn RIGHT climbing on track 211°. When on track 211° and at or above 4300 FT AMSL proceed via RNAV SID SPL 1Q or according to ATC instruction. MNM PDG 3.8% (231 FT/NM).

LDSB RNAV STANDARD INSTRUMENT DEPARTURE RWY 04

Proposed tabular description for navigation database coding

Serial number	Route	Path descriptor	Waypoint name	Flyover	Course °M (°T)	Magnetic variation	Distance (NM)	Turn direction	Altitude (ft)	Speed (kt)	Remarks	NAV SPEC
010	SPL 1Q	CF	SB801	-	031° (035.1°T)	4°E	4.2	-	-	-	MNM PDG 3.8% (231 FT/NM) to 6000 FT AMSL	RNAV 1
020		TF	SB802	-	111° (115.1°T)	4°E	6.0	-	-	-		
030		TF	SB803	Y	211° (215.2°T)	4°E	3.6	R	-	-180		
040		TF	HUM		282° (286.4°T)	4°E	6.4	-	+6000	-220		
050		TF	SPL	-	304° (307.7°T)	4°E	20.6	-	-	-		

WARNING

Back-up conventional (NON-RNAV) procedure, in case of loss of RNAV 1 capability or RNAV system failure, below minimum radar vectoring altitude for RNAV SID SIPAL 1Q only:

Climb straight ahead to intercept and follow R-111 SPL. At 27.1 DME SPL turn RIGHT climbing on track 165°. When on track 165° and at or above 4300 FT AMSL proceed via RNAV SID SIPAL 1Q or according to ATC instruction. MNM PDG 3.8% (231 FT/NM).

LDSB RNAV STANDARD INSTRUMENT DEPARTURE RWY 04

Proposed tabular description for navigation database coding

Serial number	Route	Path descriptor	Waypoint name	Flyover	Course °M (°T)	Magnetic variation	Distance (NM)	Turn direction	Altitude (ft)	Speed (kt)	Remarks	NAV SPEC
010	SIPAL 1Q	CF	SB801	-	031° (035.1°T)	4°E	4.2	-	-	-180	MNM PDG 3.8% (231 FT/NM) to 6000 FT AMSL	RNAV 1
020		TF	SB802	-	111° (115.1°T)	4°E	6.0	-	-	-		
030		TF	SB804	-	165° (168.5°T)	4°E	5.0	-	-	-		
040		TF	SIPAL	-	119° (122.8°T)	4°E	9.7	-	+8000	-		

Waypoint coordinates

Waypoint name	WGS-84 latitude	WGS-84 longitude
SIPAL	430812N	0170425E
HUM	431713.88N	0164042.42E
SPL	432947.69N	0161817.00E
SB801	432055.8N	0164425.8E
SB802	431821.9N	0165155.2E
SB803	431526.1N	0164905.4E
SB804	431327.8N	0165316.8E

CHANGE: RMZ Brač added; ATZ Brač added; PBN box updated; Airport name Split/Kaštel to Split/Saint-Jerome; Obstacles updated; Heliport Split/Firule added; Split/Resnik Water aerodrome removed; Editorial.