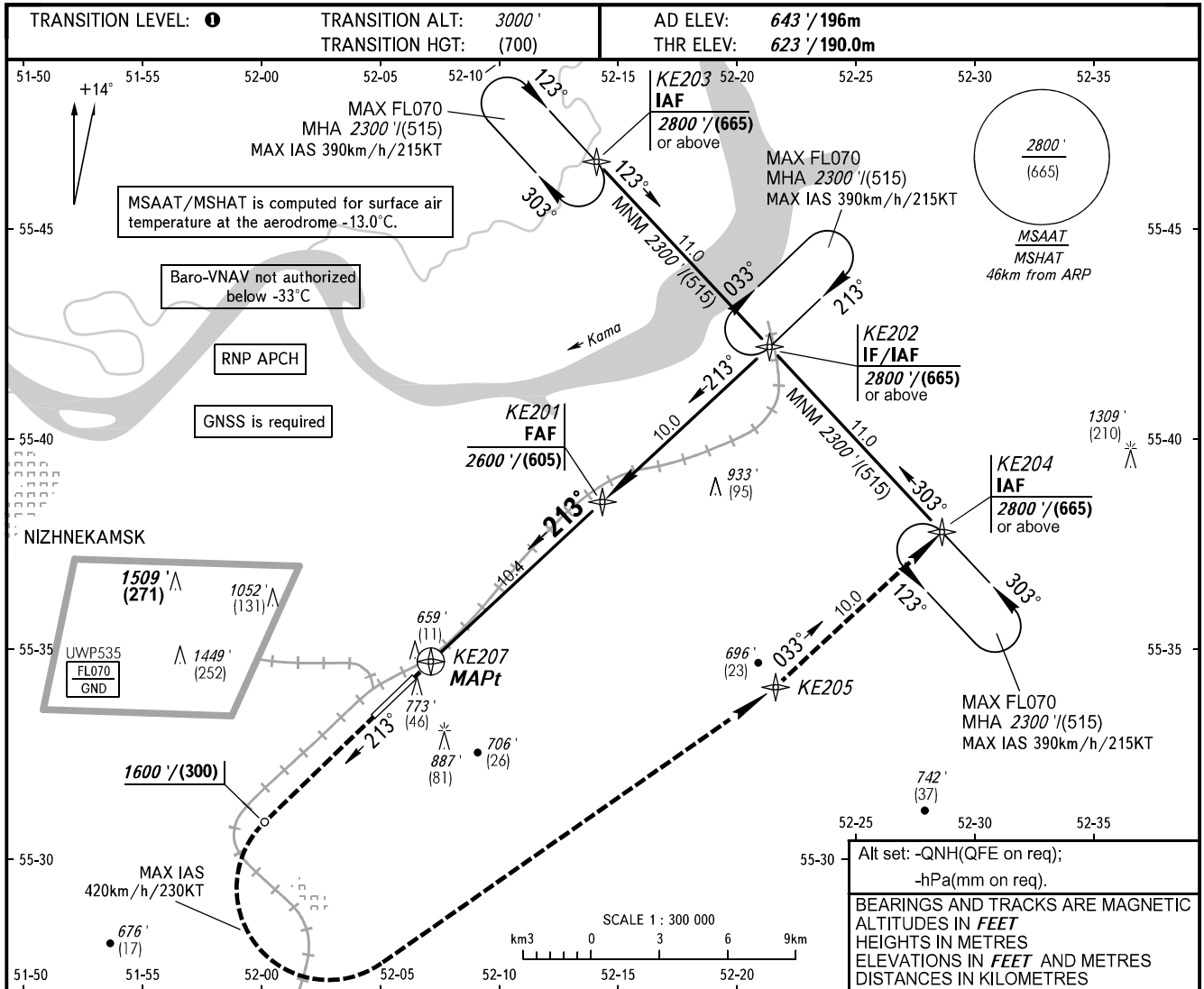


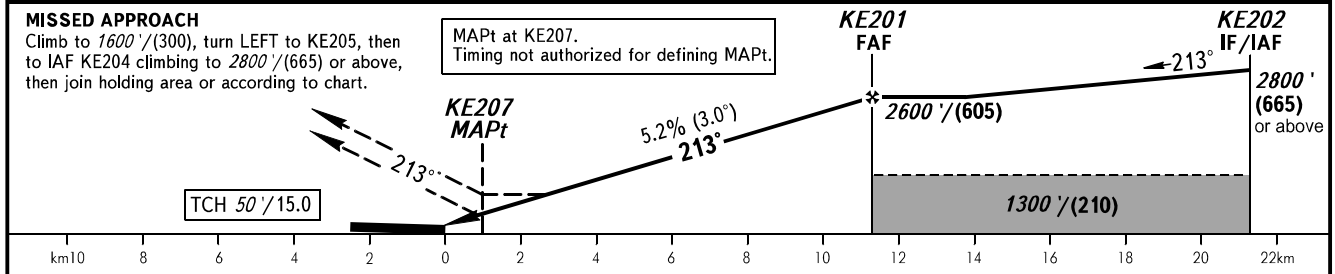
**INSTRUMENT
APPROACH
CHART - ICAO**

RADAR	127.900
TOWER	127.900
START	121.200

NIZHNEKAMSK, RUSSIA
BEGISHEVO
RNP RWY 21



DIST to THR RWY 21	2.0	4.0	6.0	8.0	10.0
ALTITUDE	1020' / 310	1360' / 415	1700' / 520	2040' / 625	2380' / 725
HEIGHT	(400') / (120)	(740') / (225)	(1080') / (330)	(1420') / (435)	(1760') / (535)



OCA(H)		A	B	C	D								
Straight-in Approach	LNAV/VNAV	903' (280') 275 (86)	915' (292') 279 (89)	923' (300') 282 (92)	934' (311') 285 (95)								
	LNAV	910' (290') 280 (90)	910' (290') 280 (90)	930' (300') 285 (95)	950' (320') 290 (100)								
Circling		1070' (430') 330 (130)	1190' (540') 365 (165)	1290' (640') 395 (195)	1340' (690') 410 (210)								
GROUND SPEED		km/h	150	180	210	240	270	300	330	360	390	420	450
		kt	81	97	113	130	146	162	178	194	211	227	243
RATE OF DESCENT		m/s	2.2	2.6	3.0	3.5	3.9	4.3	4.8	5.2	5.6	6.1	6.5
		ft/min	427	512	597	682	768	853	938	1024	1109	1194	1280

TRANSITION LEVEL:
 - FLO40 when QNH is 1013 hPa (760mm mercury column) or above;
 - FLO50 when QNH is 977 hPa (733mm mercury column) or above, but less than 1013 hPa (760mm mercury column);
 - FLO60 when QNH is less than 977 hPa (733mm mercury column).
 Visual manoeuvring in sector 228° - 018° is PROHIBITED.

CHANGE: New chart