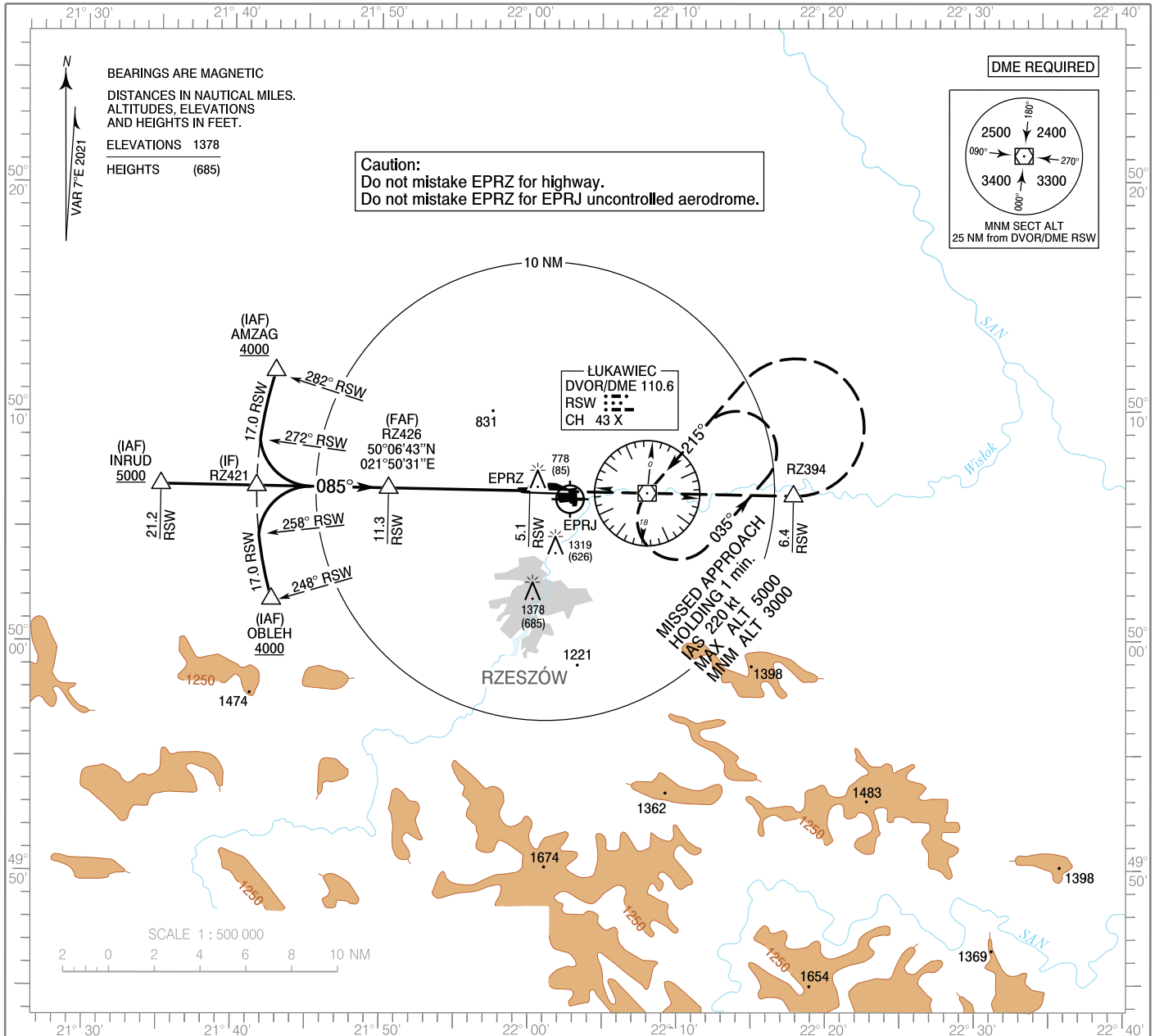


**INSTRUMENT  
APPROACH  
CHART - ICAO**

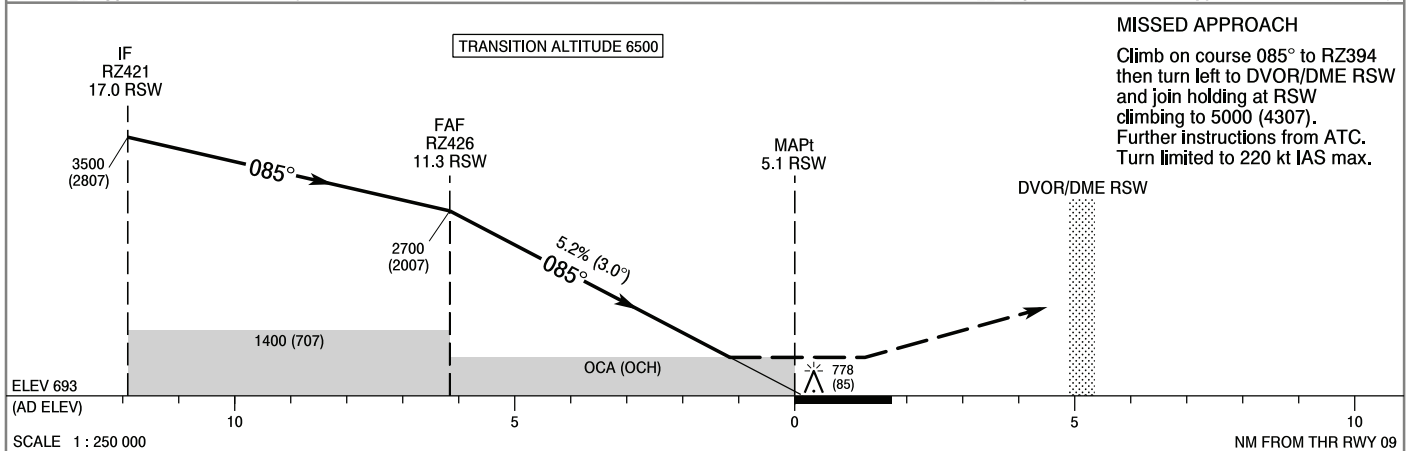
AERODROME ELEV 693 ft  
THR RWY 09 ELEV 688 ft  
HEIGHTS RELATED TO AD ELEV

Kraków APPROACH 133.030  
Rzeszów GROUND 121.805  
Rzeszów TOWER 126.805  
ATIS 124.955

**Rzeszów - Jasionka  
VOR  
RWY 09 (CAT A/B/C/D)**



Correction: FREQ Kraków APPROACH added.



**MISSED APPROACH**  
Climb on course 085° to RZ394 then turn left to DVOR/DME RSW and join holding at RSW climbing to 5000 (4307). Further instructions from ATC. Turn limited to 220 kt IAS max.

| OCA (OCH)                                       |            |            |            |            | Distance FAF - MAPt 6.2 NM                  |          |             |             |            |            |        |        |
|---|------------|------------|------------|------------|---|----------|-------------|-------------|------------|------------|--------|--------|
| Cat. of ACFT                                    | A          | B          | C          | D          | Speed                                       | kt       | 80          | 100         | 120        | 140        | 160    | 180    |
| Straight - in                                   | 1110 (417) | 1110 (417) | 1110 (417) | 1110 (417) | Time  | min : s  | 4 : 38      | 3 : 42      | 3 : 05     | 2 : 39     | 2 : 19 | 2 : 04 |
|   |            |            |            |            | Rate of descent                             | ft / min | 420         | 530         | 630        | 740        | 840    | 950    |
|   |            |            |            |            | Final approach distance / altitude (height) |          |             |             |            |            |        |        |
| Circling  | 1160 (467) | 1210 (517) | 1360 (667) | 1390 (697) | Distance                                    |          | 10          | 9           | 8          | 7          |        |        |
| *Cat C and D: circling north of aerodrome only. |            |            |            |            | Altitude (height)                           |          | 2300 (1607) | 1980 (1287) | 1660 (967) | 1340 (647) |        |        |

**INSTRUMENT  
APPROACH  
CHART - ICAO**

**Rzeszów - Jasionka  
VOR  
RWY 09 (CAT A/B/C/D)**

| FIX / POINT                         | LATITUDE     | LONGITUDE     | FIX FORMATION                         |                     |
|-------------------------------------|--------------|---------------|---------------------------------------|---------------------|
| IAF<br>AMZAG                        | 50°11'48.7"N | 021°42'52.6"E | 288.27° GEO<br>(282° MAG)<br>DVOR RSW | 17.03 NM<br>DME RSW |
| IAF<br>INRUD                        | 50°06'51.0"N | 021°35'06.7"E | 271.11° GEO<br>(265° MAG)<br>DVOR RSW | 21.20 NM<br>DME RSW |
| IAF<br>OBLEH                        | 50°01'51.2"N | 021°42'37.2"E | 254.26° GEO<br>(248° MAG)<br>DVOR RSW | 17.03 NM<br>DME RSW |
| IF<br>RZ421                         | 50°06'47.8"N | 021°41'35.3"E | 271.11° GEO<br>(265° MAG)<br>DVOR RSW | 17.03 NM<br>DME RSW |
| FAF<br>RZ426                        | 50°06'42.8"N | 021°50'31.3"E | 271.11° GEO<br>(265° MAG)<br>DVOR RSW | 11.28 NM<br>DME RSW |
| MAPt                                | 50°06'36.7"N | 022°00'05.5"E | 271.11° GEO<br>(265° MAG)<br>DVOR RSW | 5.12 NM<br>DME RSW  |
| RZ394                               | 50°06'23.2"N | 022°17'57.1"E | 091.11° GEO<br>(085° MAG)<br>DVOR RSW | 6.38 NM<br>DME RSW  |
| DVOR/DME RSW                        | 50°06'31.0"N | 022°08'02.5"E |                                       |                     |
| Final approach descent angle: 3.00° |              |               |                                       |                     |