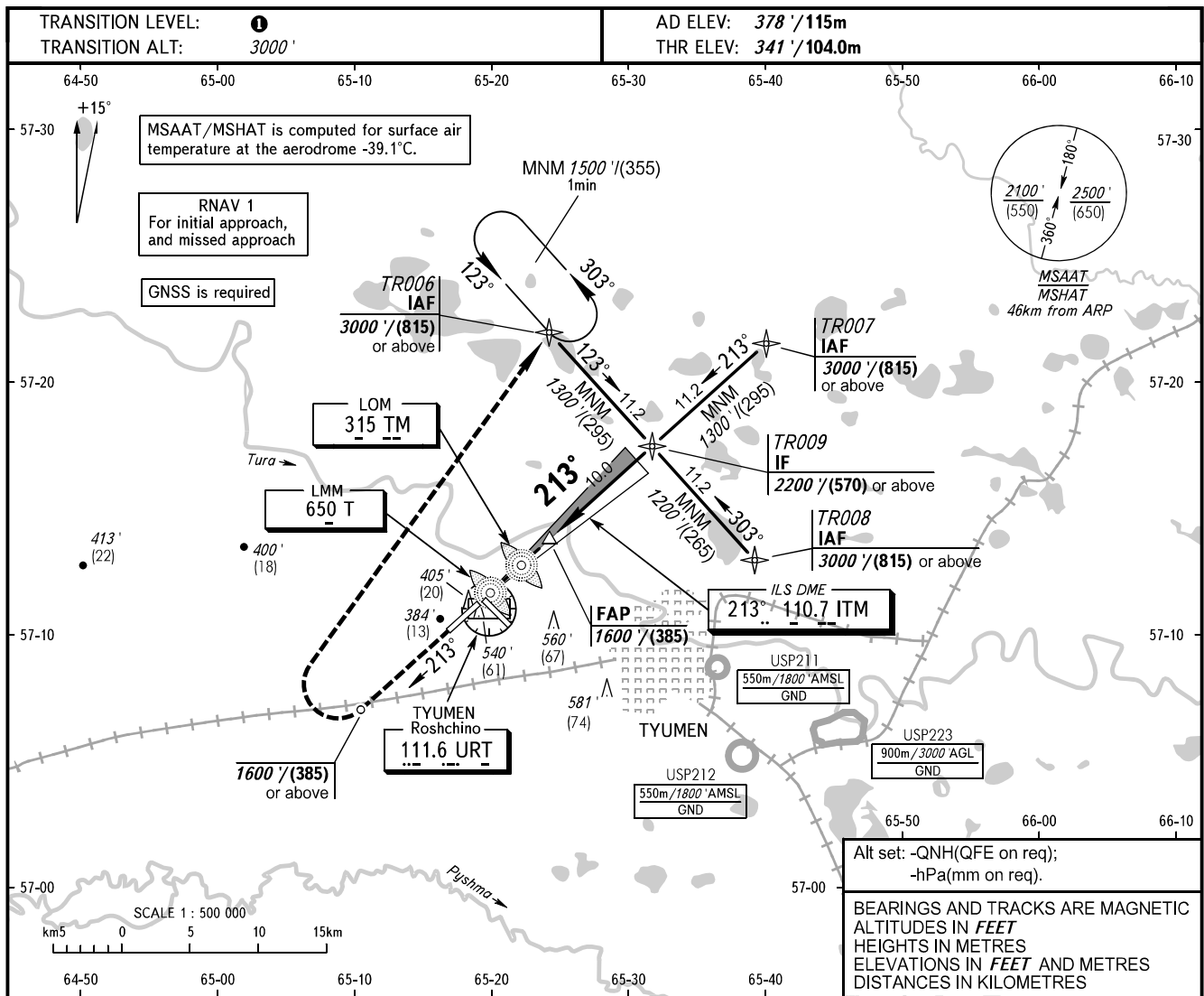


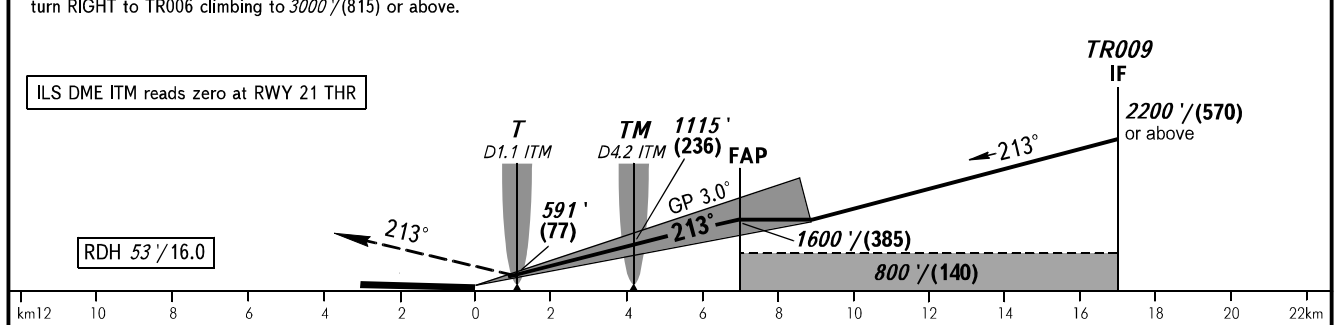
**INSTRUMENT
APPROACH
CHART - ICAO**

**TYUMEN, RUSSIA
ROSHCHINO
ILS Z CAT I RWY 21**

RADAR **126.100**
START **118.200**



MISSED APPROACH Climb on track 213° to 1600'/(385) or above, turn RIGHT to TR006 climbing to 3000'/(815) or above.	DIST to RWY 21 THR	2.0	4.0	6.0
	ALTITUDE/HEIGHT	739'/(122)	1082'/(226)	1426'/(331)



OCA(H)		A	B	C	D	① TRANSITION LEVEL: - FL040 when QNH is 1013 hPa (760mm mercury column) or above; - FL050 when QNH is 977 hPa (733mm mercury column) or above, but less than 1013 hPa (760mm mercury column); - FL060 when QNH is less than 977 hPa (733mm mercury column).				
Straight-in Approach	CAT I	541' (200') (60)	548' (207') (63)	556' (215') (66)	566' (225') (69)					
Circling		840' (460') (145)	870' (500') (155)	970' (600') (185)	1070' (690') (215)					
GROUND SPEED	km/h	150	180	210	240	270	300	330	360	390
	kt	81	97	113	130	146	162	178	194	211
RATE OF DESCENT	m/s	2.2	2.6	3.1	3.5	3.9	4.4	4.8	5.2	5.7
	ft/min	433	512	610	689	768	866	945	1024	1122