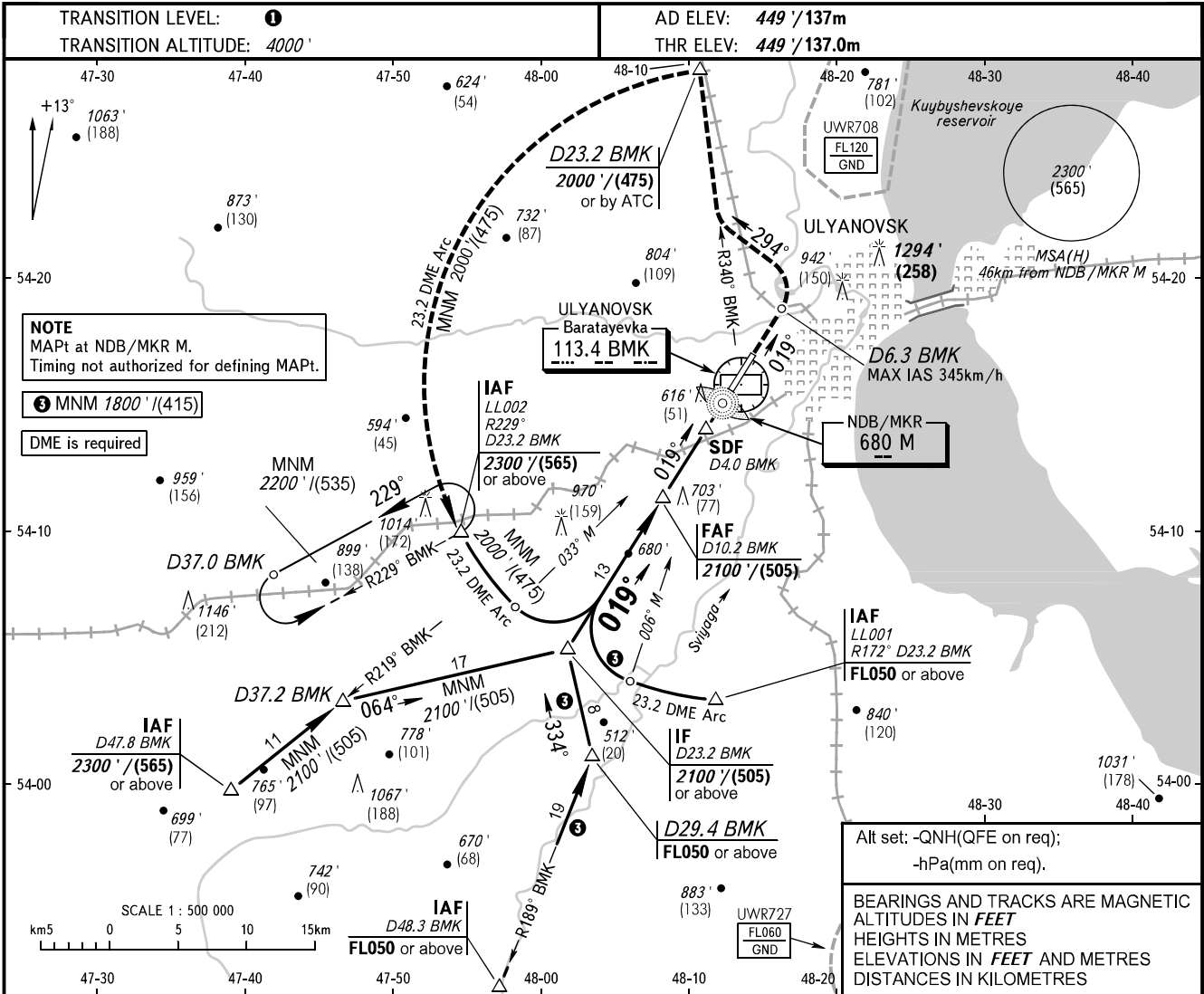


**INSTRUMENT
APPROACH
CHART - ICAO**

**ULYANOVSK, RUSSIA
BARATAYEVKA
NDB Z RWY 02**

RADAR **120.800**
PRECISION **120.400**

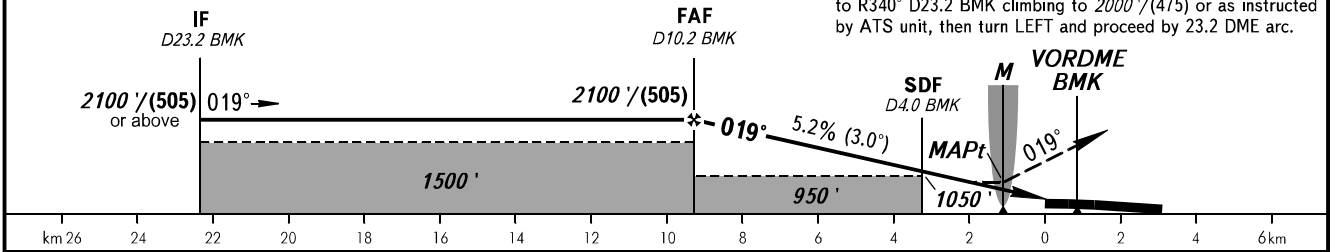


DME BMK	10.0	8.0	6.0	4.0
ALTITUDE	2080'	1740'	1400'	1050'

Alt set: -QNH(QFE on req);
-hPa(mm on req).

BEARINGS AND TRACKS ARE MAGNETIC
ALTITUDES IN FEET
HEIGHTS IN METRES
ELEVATIONS IN FEET AND METRES
DISTANCES IN KILOMETRES

MISSED APPROACH
Climb straight ahead to D6.3 BMK, turn LEFT onto track 294°, then intercept R340° BMK and proceed to R340° D23.2 BMK climbing to 2000'/(475) or as instructed by ATS unit, then turn LEFT and proceed by 23.2 DME arc.



OCA(H)		A	B	C	D
Straight-in	With SDF	850' (400')	850' (400')	850' (400')	850' (400')
	WO SDF	950' (500')	950' (500')	950' (500')	950' (500')
Approach					
Circling		950' (500')	1010' (560')	1340' (890')	1340' (890')

1 TRANSITION LEVEL:
- FLO50 when QNH is 1013 hPa (760mm mercury column) or above;
- FLO60 when QNH is 977 hPa (733mm mercury column) or above, but less than 1013 hPa (760mm mercury column);
- FLO70 when QNH is less than 977 hPa (733mm mercury column).

2 Visual manoeuvring east of the AD is PROHIBITED.

GROUND SPEED	km/h	150	180	210	240	270	300	330	360	390
	m/s	2.2	2.6	3.0	3.5	3.9	4.3	4.8	5.2	5.6
RATE OF DESCENT	ft/min	427	512	597	682	768	853	938	1024	1109

CHANGE: Heading, HGT