

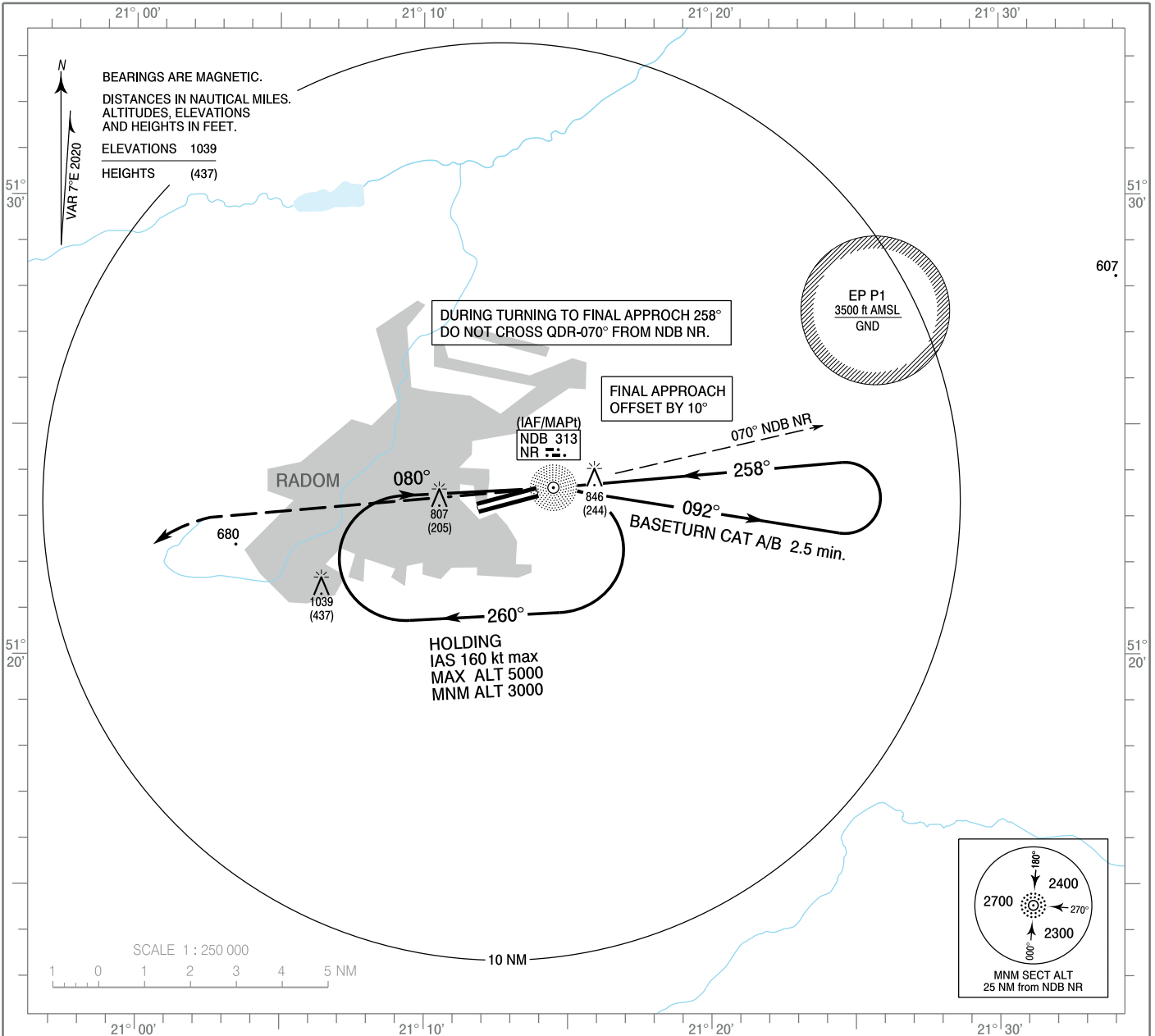
**INSTRUMENT  
APPROACH  
CHART - ICAO**

AERODROME ELEV 625 ft  
THR RWY 25 ELEV 602 ft  
HEIGHTS RELATED TO THR RWY 25

MIL Radom APPROACH 128.675  
MIL Radom TOWER 118.430  
Radom TOWER 118.430

**Warszawa - Radom  
NDB z  
RWY 25 (CAT A/B)**

**MILITARY USE ONLY**

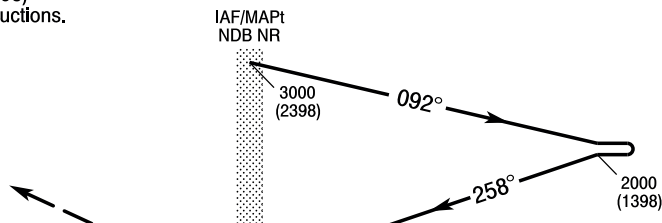


Correction: Vertical reference datum. Obstacle.

**MISSED APPROACH**

Climb straight ahead to 2000 (1398),  
then turn left to NDB NR  
climbing to 3000 (2398)  
and follow ATC instructions.

TRANSITION ALTITUDE 6500



ELEV 602

(THR RWY 25)

SCALE 1 : 250 000

NM FROM THR RWY 25

		OCA (OCH)																		
Cat. of ACFT	Straight - in	A	B																	
			1152 (550)	1152 (550)																
	Circling* (OCH AAL)	1175 (550)	1175 (550)																	

**INSTRUMENT  
APPROACH  
CHART - ICAO**

**Warszawa - Radom  
NDB z  
RWY 25 (CAT A/B)**

FIX / POINT	LATITUDE	LONGITUDE	FIX FORMATION	
IAF NDB NR	51°23'37.8"N	021°14'29.9"E		
MAPt NDB NR	51°23'37.8"N	021°14'29.9"E		