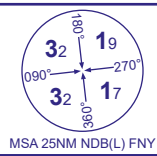


# INSTRUMENT APPROACH CHART - ICAO

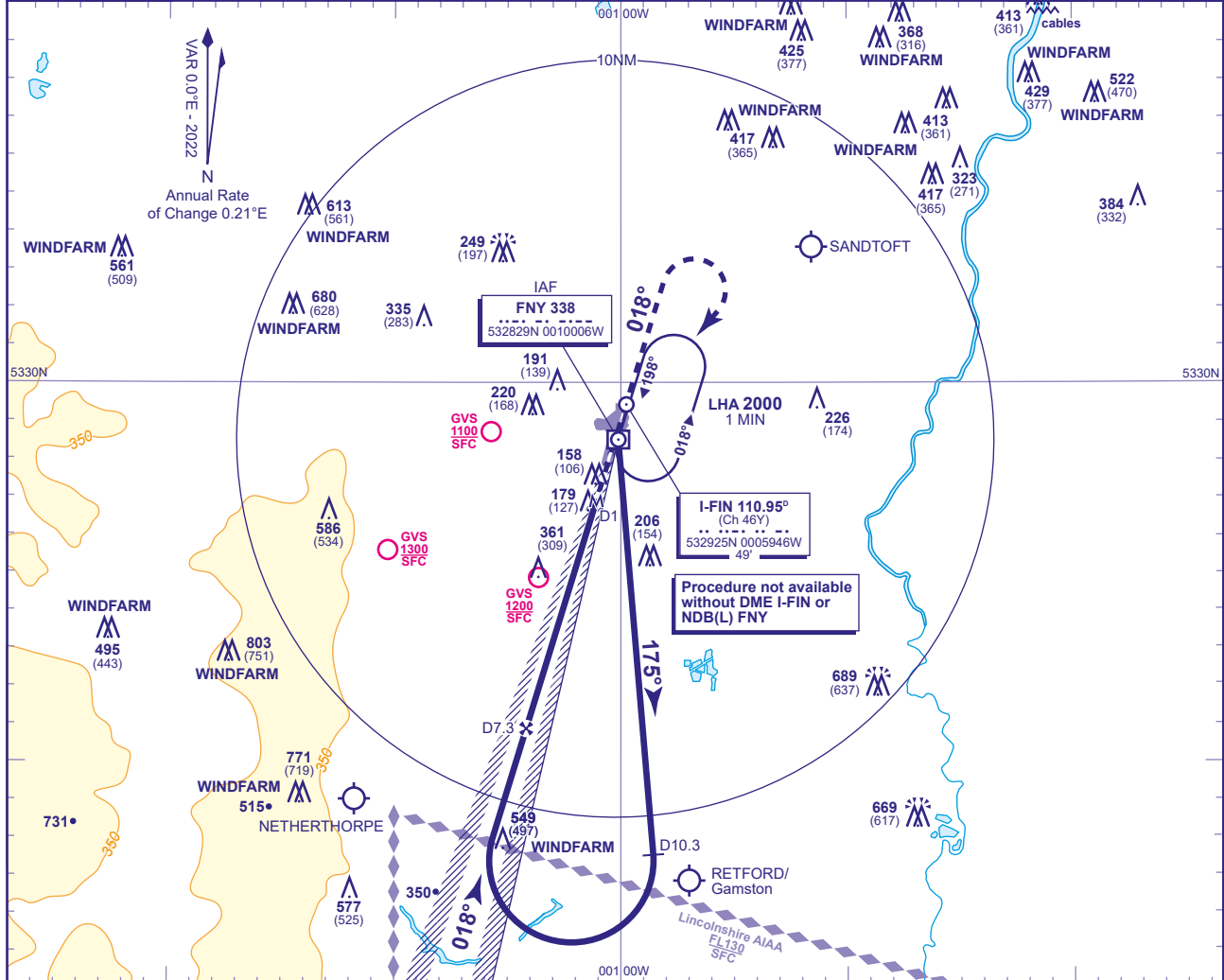
# DONCASTER SHEFFIELD

**LOC/DME Y  
RWY 02**  
(ACFT CAT C,D)



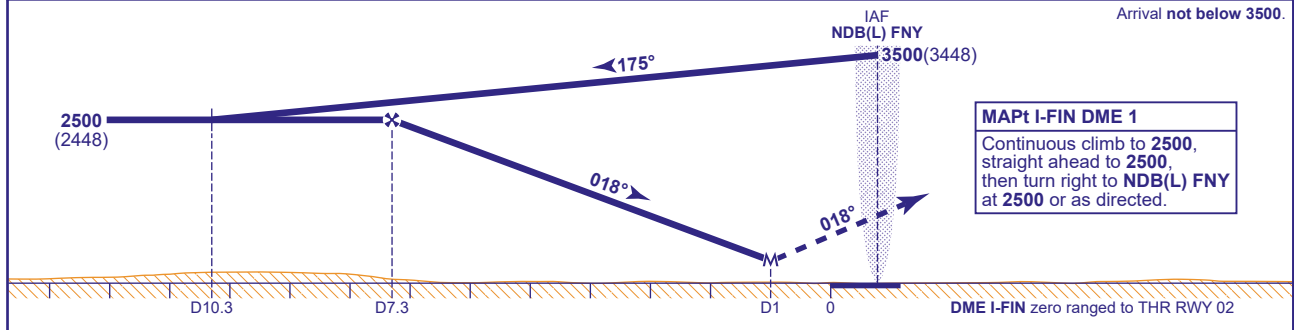
APP	126.225	DONCASTER APPROACH	AD ELEVATION	55
TWR	128.775	DONCASTER TOWER	THR ELEVATION	52
RAD	126.225, 129.055	DONCASTER RADAR	OBSTACLE ELEVATION	803 AMSL (751) (ABOVE THR)
ATIS	134.955	DONCASTER INFORMATION	BEARINGS ARE MAGNETIC	

TRANSITION ALTITUDE  
**5000**



RECOMMENDED PROFILE Gradient 5.4%, 325FT/NM

DME I-FIN	7	6	5	4	3	2	1
ALT(HGT)	2400(2348)	2070(2018)	1750(1698)	1420(1368)	1090(1038)	760(708)	430(378)



Aircraft Category		C	D	Rate of descent					
OCA (OCH)	Procedure	430(378)	430(378)	G/S KT	160	140	120	100	80
	VM(C)OCA (OCH AAL)	Total Area	760(705)	760(705)	FT/MIN	870	770	660	550

**NOTE 1** Aircraft will normally be required to hold not lower than 3500. Lowest altitude to commence procedure from hold after missed approach is 2500.  
**NOTE 2** CAUTION: Pilots of inbound traffic to note proximity of Retford/Gamston, Netherthorpe and Sandtoft aerodromes to instrument approach procedures.

CHANGE (4/21): MAG VAR. MAG TRACKS.