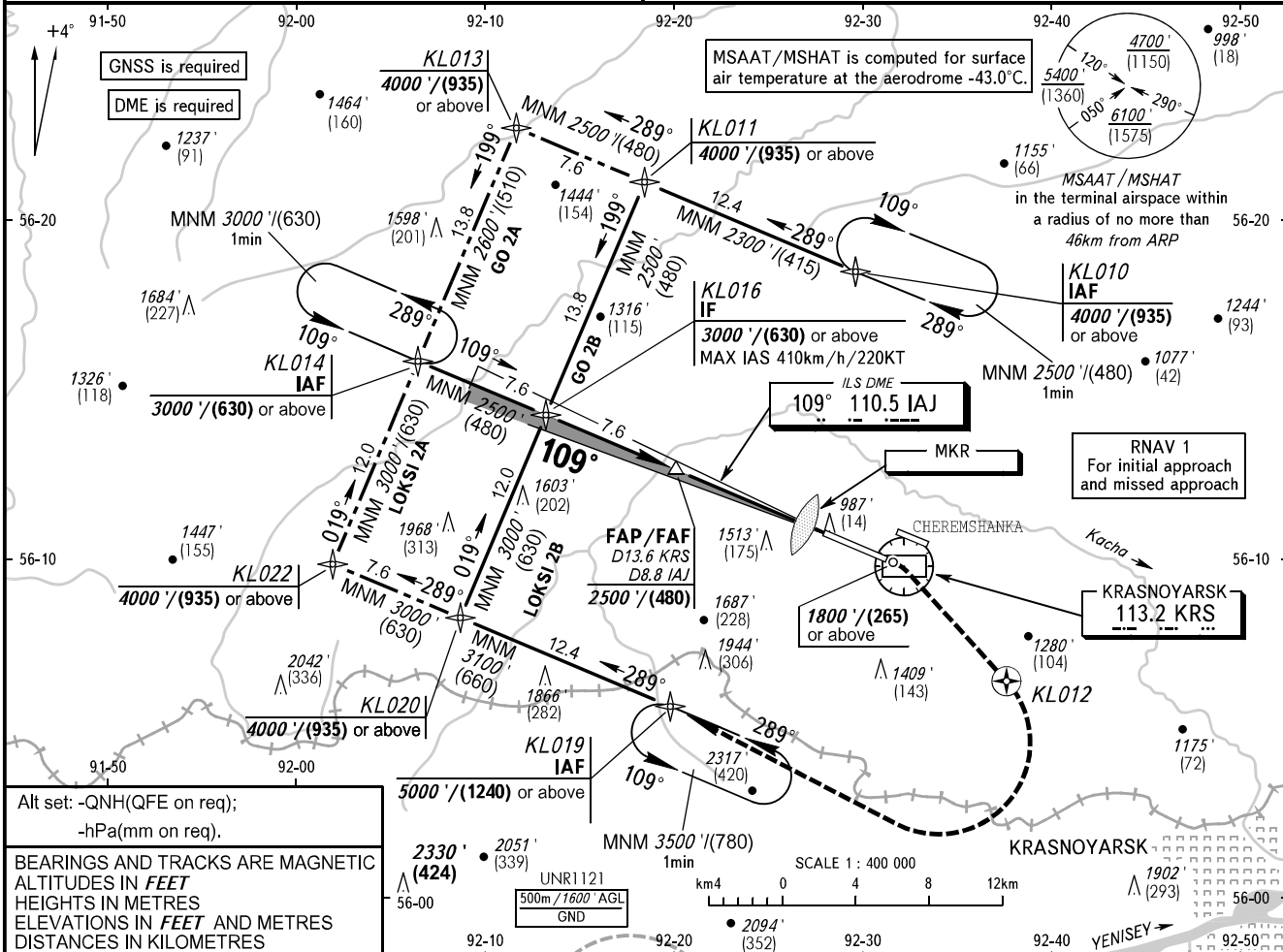


**INSTRUMENT
APPROACH
CHART - ICAO**

**KRASNOYARSK, RUSSIA
KRASNOYARSK
ILS Z CAT I/II, LOC Z RWY 11**

RADAR 122.000
TOWER 118.300

TRANSITION LEVEL: FL090 TRANSITION ALT: 7000' AD ELEV: 941'/287m
TRANSITION HGT: (1850) THR ELEV: 941'/287.0m

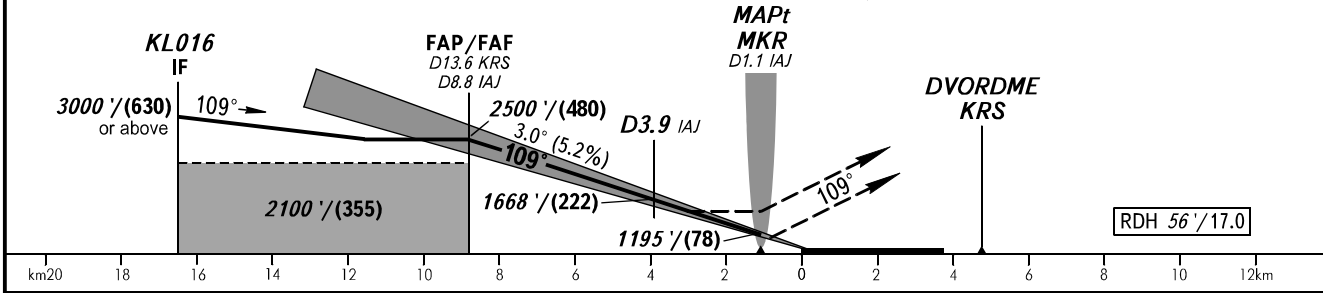


Alt set: -QNH(QFE on req);
-hPa(mm on req).

BEARINGS AND TRACKS ARE MAGNETIC
ALTITUDES IN FEET
HEIGHTS IN METRES
ELEVATIONS IN FEET AND METRES
DISTANCES IN KILOMETRES

DME KRS	12.0	10.0	8.0
ALTITUDE/HEIGHT	2246'/(398)	1903'/(294)	1559'/(476)
DME IAJ	8.0	6.0	4.0
ALTITUDE/HEIGHT	2368'/(435)	2023'/(330)	1679'/(225)

MISSED APPROACH
Climb straight ahead to 1800'/(265) or above, then proceed climbing to KL012, turn RIGHT to KL019 climbing to 4000'/(935).



OCA(H)		A	B	C	D
Straight-in	CAT I	1090' (149') (46)	1100' (159') (49)	1108' (167') (51)	1121' (180') (55)
	CAT II	1001' (60') (19)	1013' (72') (22)	1027' (86') (27)	1041' (100') (31)
Approach		1500' (560') (175)	1500' (560') (175)	1500' (560') (175)	1500' (560') (175)
LOC		1760' (820') (250)	1810' (870') (270)	2130' (1190') (365)	2190' (1250') (385)
Circling		1760' (820') (250)	1810' (870') (270)	2130' (1190') (365)	2190' (1250') (385)

WARNING:
1. RWY of KRASNOYARSK/Cheremshanka AD is located at 1800m north-east of the runway.
2. MAPt at MKR.
Timing not authorized for defining MAPt.

NOTE
ILS DME IAJ reads zero at RWY 11 THR.

GROUND SPEED	km/h	150	180	210	240	270	300	330	360	390
	kt	81	97	113	130	146	162	178	194	211
RATE OF DESCENT	m/s	2.2	2.6	3.1	3.5	3.9	4.4	4.8	5.2	5.7
	ft/min	433	512	610	689	768	866	945	1024	1122

CHANGE: New chart