

STANDARD DEPARTURE CHART - INSTRUMENT

RJFY / KANOYA

SID

QUEEN FOUR DEPARTURE

RWY08R : Climb via JAT R083 to intercept and proceed via HKC R127 to QUEEN.

RWY26L : Climb RWY HDG until 3.5NM from RWY end (JAT 3.6DME) to 1000FT or above, turn left proceed to JAT TACAN then, climb via JAT R083 to intercept and proceed via HKC R127 to QUEEN.

Note:

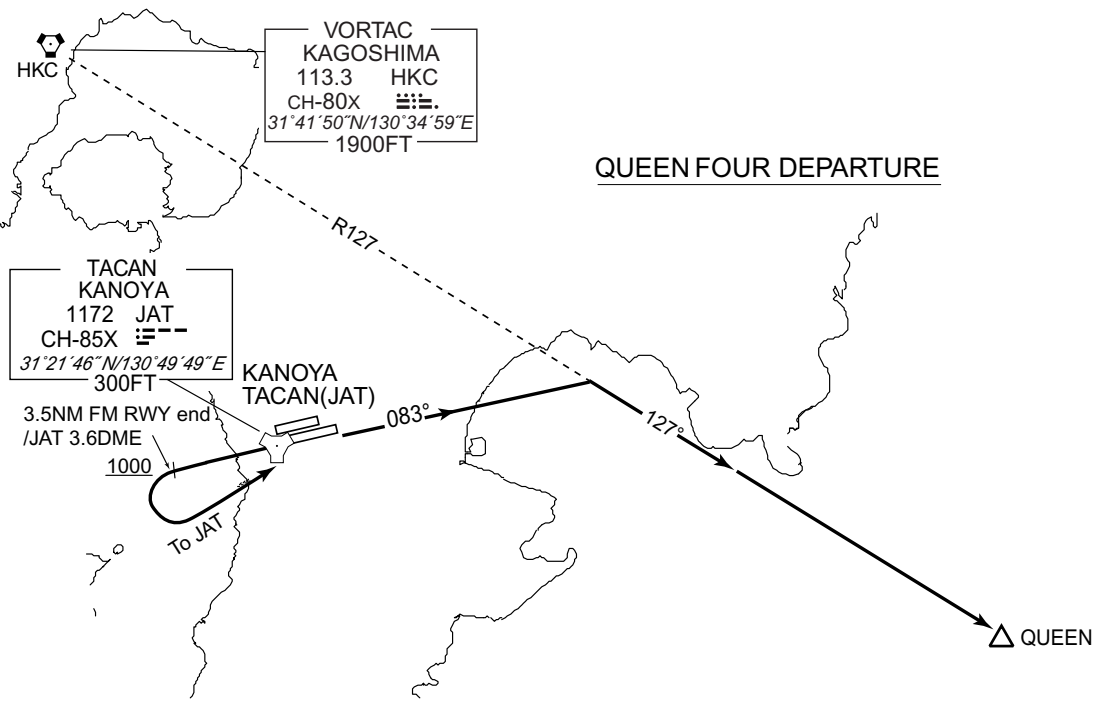
- 1 Following climb gradient should be maintained,
 - a. until passing 2000FT when take off RWY08R.
 - b. until passing 3000FT when take off RWY26L.

Speed (Knots)	60	90	120	150	180	210
Rate (Feet/Min)	300	450	600	750	900	1050

2 SHIBUSHI PETROLEUM COMBINAT at JAT R094 10DME.

- 3 Obstructions exist,
 - a. when take off RWY08R,
 - (a)229FT MSL height group of trees at 0.76NM E from ARP.
 - (b)1934FT MSL height mountain at 10.8NM ESE from ARP.
 - b. when take off RWY26L,
 - (a)582FT MSL height hill at 1NM SW from ARP.
 - (b)630FT MSL height antenna tower at 1.1NM SW from ARP.
 - (c)493FT MSL height antenna tower at 1.8NM W from ARP.
 - (d)555FT MSL height hill at 2.2NM W from ARP.
 - (e)814FT MSL height mountain at 3.0NM SW from ARP.
 - (f)837FT MSL height mountain at 3.2NM SW from ARP.
 - (g)1378FT MSL height mountain at 3.5NM S from ARP.
 - (h)1582FT MSL height mountain at 3.9NM S from ARP.
 - (i)2907FT MSL height mountain at 10NM SE from ARP.

CHANGE : PROC renamed. Radial FM HKC.



INTENTIONALLY LEFT BLANK