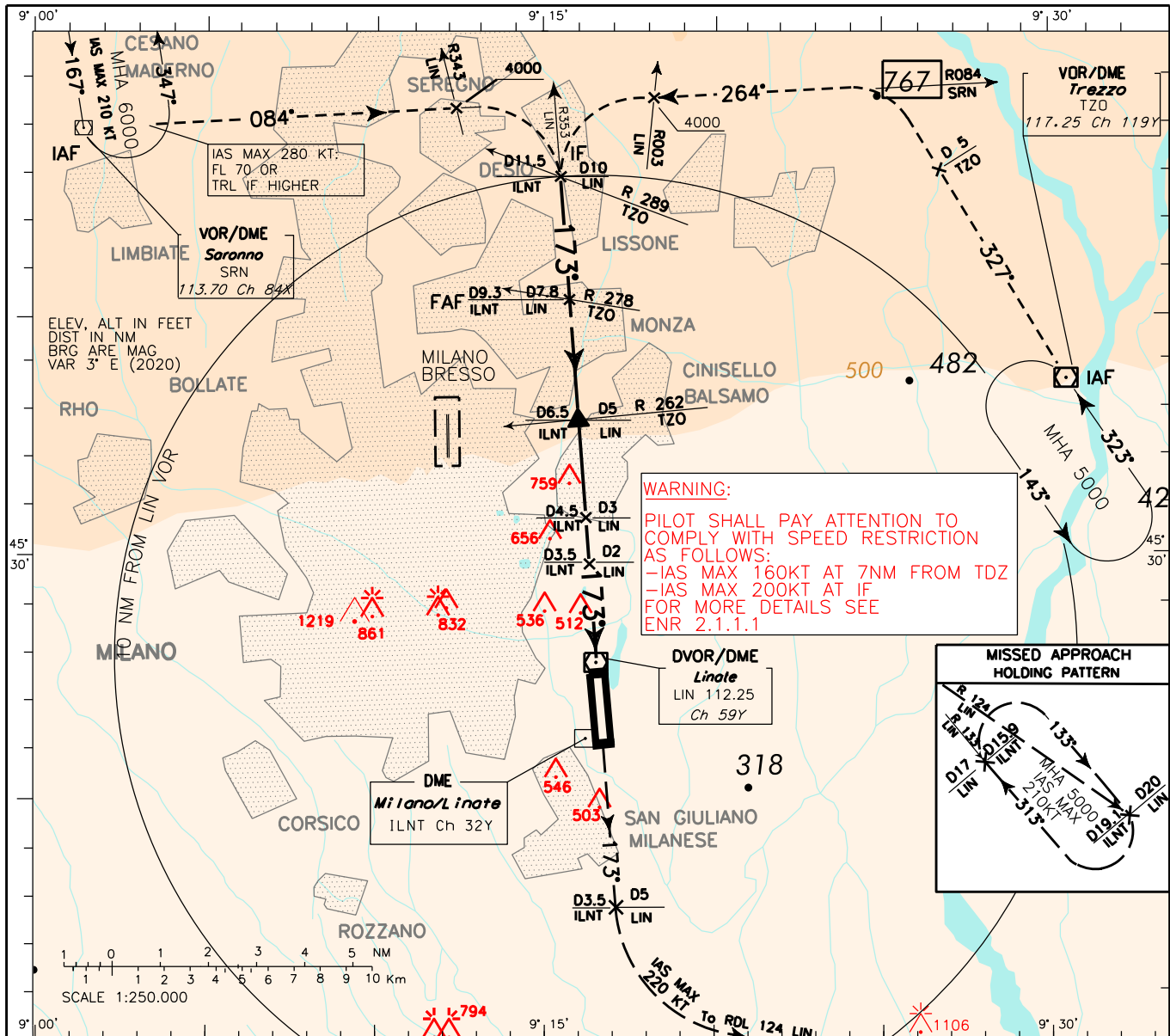


**INSTRUMENT APPROACH CHART - ICAO**

**AERODROME ELEV** 353  
**APP** Milano Radar  
**TWR** Linate TWR  
**ATIS** Linate Terminal Information

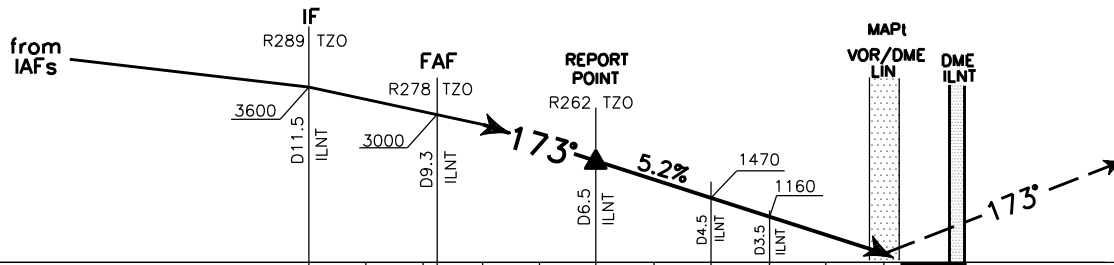
**CH 133.180**  
**118.100 (118.400)**  
**136.375**  
**MILANO/Linate (LIML)**  
**VOR RWY17**

DOC 8168 - ED.7 - 2020



**TRANSITION ALT 6000**  
**MISSED APPROACH:** Climbing to 5000 ft proceed on track 173°, at 5 NM LIN DME (or 3.5 ILNT DME) turn left (IAS MAX 220kt) until joining RDL 124 LIN VOR inbound to missed approach holding pattern. Hold as published.

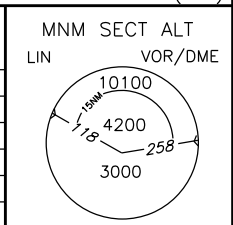
**REMARK:** Missed approach obstacles clearance is provided by 2.5% gradient. 3.5% (213ft/NM) is required to remain inside vertical limits of controlled airspace while proceeding to missed approach holding pattern.



LIN DME (NM)	D10	D9	D8	D7	D6	D5	D4	D3	D2	D1	D0	THR ELEV 353	LIN DME (NM)										
THR 17 (NM)	16	15	14	13	12	11	10	9	8	7	6	5	4	3	2	1	0	1	2	3	4	5	6

OCA (OCH)	A	B	C	D
STRAIGHT IN APPROACH	VOR+DME	800 (447)		
	VOR	1050 (697)		
CIRCLING (EAST OF RWY)	1050 (697)		1200 (847)	

CIRCLING SECTORS		GS	FT PER MIN	DIST	ALT (HGT)
		80	421	6LIN	2430 (2077)
		100	527	5LIN	2110 (1757)
		120	632	4LIN	1790 (1437)
		140	737	3LIN	1470 (1117)
		160	842	2LIN	1155 (802)
	180	948	1LIN	840 (487)	



CHANGE: SRN NDB AND TZO NDB DISMISSED.