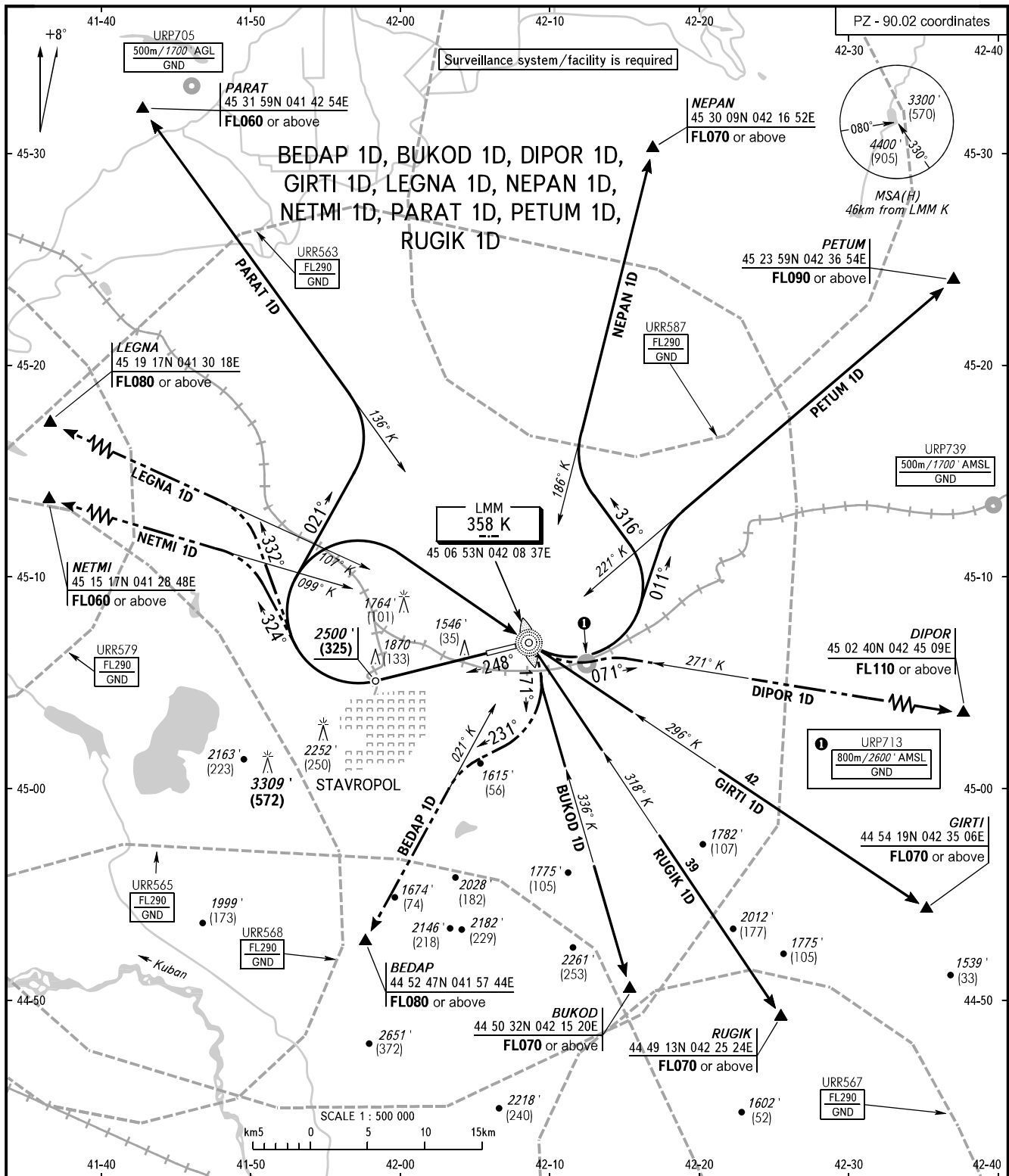


STANDARD DEPARTURE CHART  
INSTRUMENT (SID) - ICAO

TRANSITION ALTITUDE: **5000'**  
TRANSITION HEIGHT: **(1090)**

STAVROPOL, RUSSIA  
SHPAKOVSKOYE  
RWY 25



TOWER **120.900**  
APPROACH **121.050**

**NOTE**  
BUKOD 1D by ATC, when URR563, URR565, URR567 are active.  
GRTI 1D, PARAT 1D by ATC, when URR563 is active.  
NEPAN 1D, PETUM 1D by ATC, when URR563, URR587 are active.  
RUGIK 1D by ATC, when URR563, URR567 are active.

BEARINGS AND TRACKS ARE MAGNETIC  
ALTITUDES IN **FEET**  
HEIGHTS IN METRES  
ELEVATIONS IN **FEET** AND METRES  
DISTANCES IN KILOMETRES

Alt set: - QNH (QFE on req);  
- hPa (mm on req).