

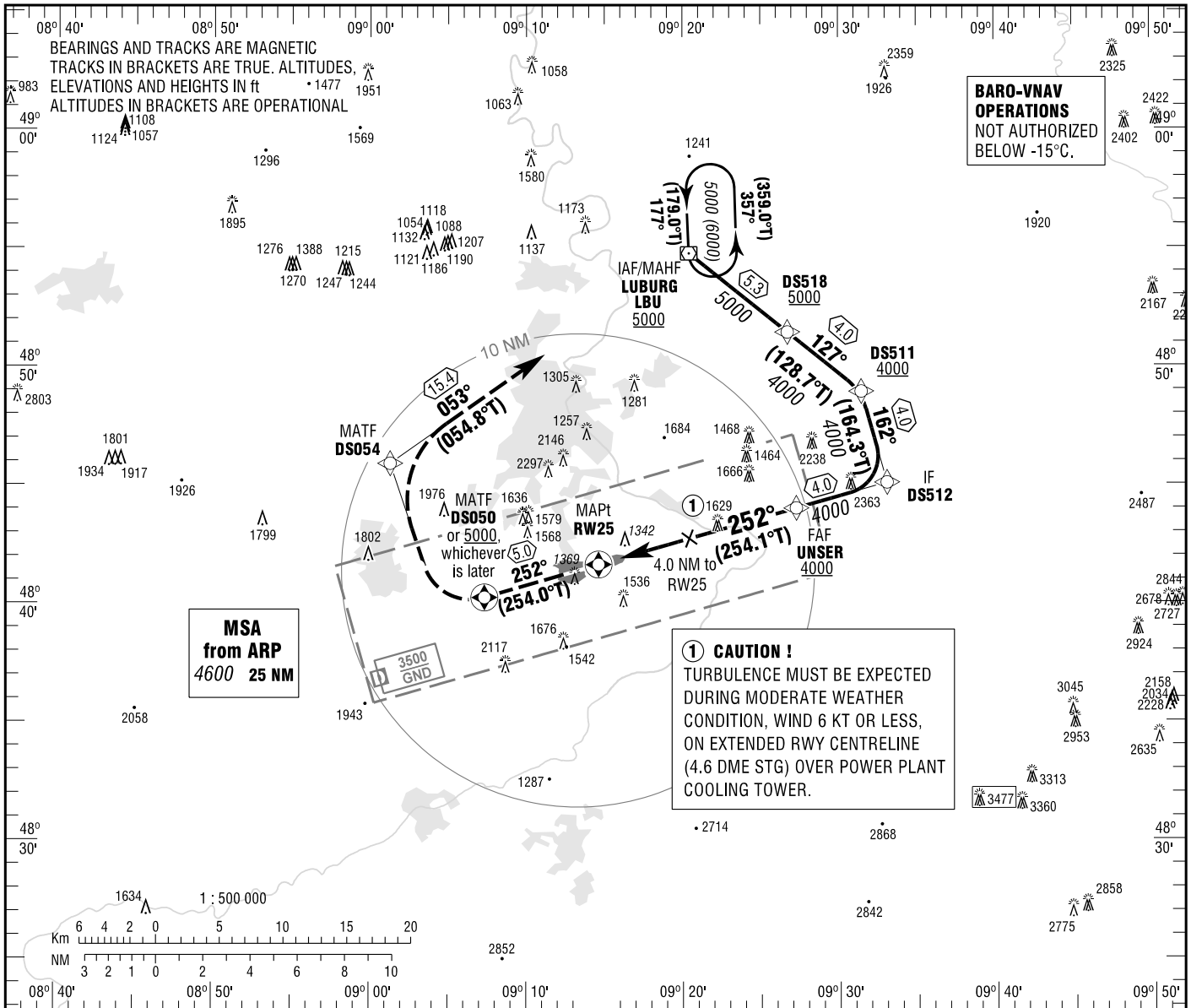
**INSTRUMENT
APPROACH
CHART - ICAO**

VAR 2° E
ELEV 1276
OCH RELATED TO
THR 25 ELEV 1181

STUTTART ATIS 126.130
LANGEN RADAR 125.050
119.200

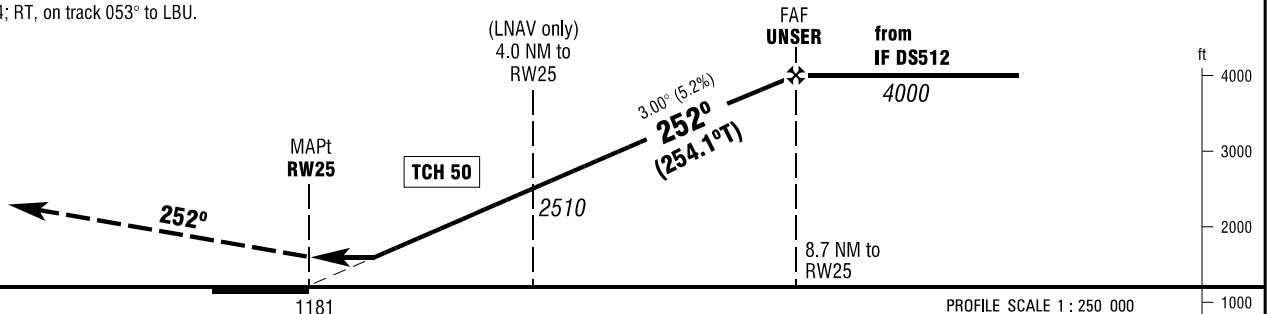
STUTTART ARRIVAL 119.850
STUTTART TOWER 118.805
STUTTART GROUND 118.605

**STUTTART
RNP
RWY 25**



MISSED APPROACH PROCEDURE

Climb on course 252° to 5000;
when crossing DS050 or 5000, whichever is later;
RT, direct DS054; RT, on track 053° to LBU.



OCA (OCH)	A	B	C	D
LNAV	1590 (410)	1590 (410)	1590 (410)	1620 (440)
LNAV / VNAV	1590 (410)	1590 (410)	1590 (410)	1590 (410)

DIST THR / RW25	2	3	4	5	6	7	8
ALTITUDE	1870	2190	2510	2830	3150	3460	3780

Timing not authorized for defining the MAPt.

GS	kt	80	100	120	140	160	180
UNSER - RW25 (8.7 NM)	MIN:SEC	6:32	5:13	4:21	3:44	3:16	2:54
Rate of descent (5.2%)	ft / MIN	420	530	640	740	850	960

Correction: Callsign, obstacles revised, highest obstacle.