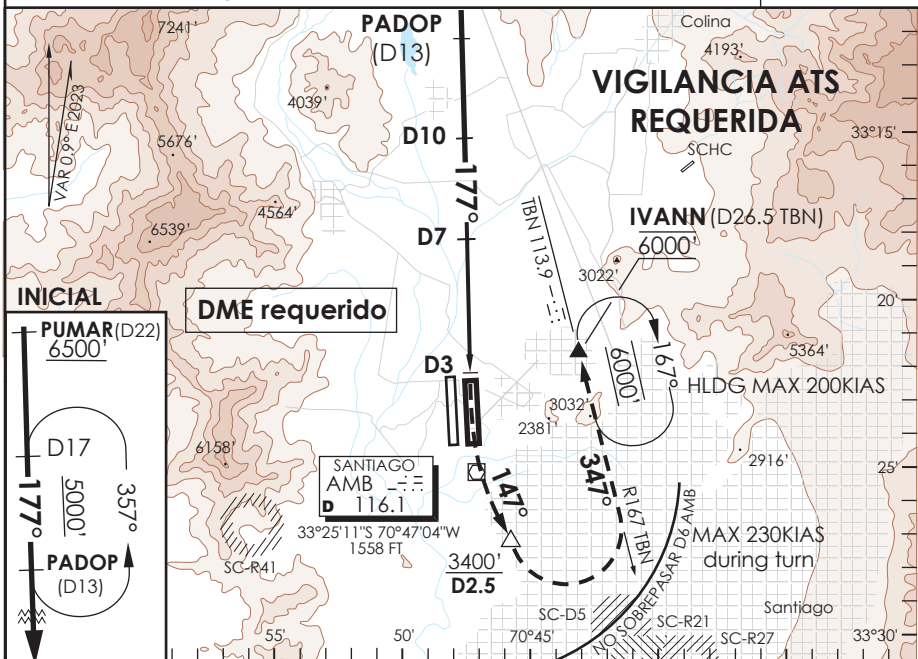


SANTIAGO - CHILE

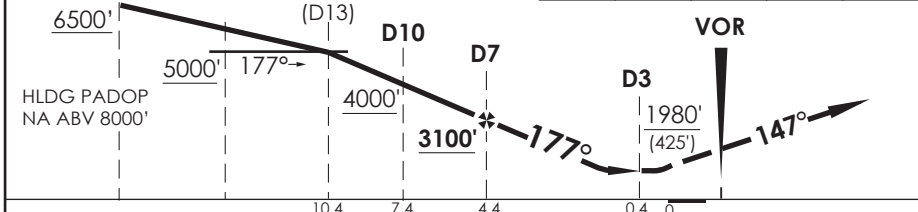
ATIS 132.1	SANTIAGO RADAR Santiago Radar 119.7/129.7	TORRE SANTIAGO Santiago Tower 118.1/118.35	CONTROL TERRESTRE Ground Control GNDC W 122.5/122.6 GNDC E 122.2/122.6
VOR AMB 116.1	FINAL APCH CRS 177°	MNM ALT D7 3100'	MDA (H) 1980' (425')
AD Elev. 1555' THR 17L Elev. 1550'			19000 FT

APCH FRUSTRADA: ASC 2000' para interceptar R147 AMB hasta D2.5, viraje izquierda para interceptar R167 TBN DCT IVANN 6000', luego según AUTH ATC *.
Missed Apch: Climb to 2000' to intercept R147 AMB until D2.5, left turn to intercept R167 TBN DCT IVANN 6000', then according ATC clearance*.

MSA 25 NM AMB



ALT MNM 5000'	Nivel de Transición por ATC Transition Level by ATC		2000'	LT	R147	LT	6000'
PUMAR(D22)	D17	PADOP			AMB		TBN
6500'		(D13)			D2.5		IVANN



C A B C D	DIRECTO RWY 17L Straight in RWY 17L		CIRCULANDO Circling	ALTN Alternate Minimums
	MDA 1980' (425')			
	ALSF-2	WO ALSF-2	NA	VER PAG. GEN 2.19 See page GEN 2.19
A	1.2 Km	1.6 Km		
B	1.6 Km	2.2 Km		
D	2.0 Km	2.4 Km		

*MNM razón ASC APCH Frustrada: 300 FT/NM hasta 6000'

Veloc. Terrestre Kts	80	100	120	140	160
Angulo DES 3.2° FPM	453'	566'	679'	793'	906'
MIN:SEC(FAF TO MAPT 4.0)	3:00	2:24	2:00	1:43	1:30