

# HI-TACAN RWY 15C

TACAN SHP Chan <b>45</b>	APCH CRS <b>154°</b>	Rwy ldg <b>10,003</b> TDZE <b>1003</b> Arprt Elev <b>1019</b>
-----------------------------	-------------------------	---

[USAF]

SHEPPARD AFB/WICHITA FALLS MUNI (KSPS)

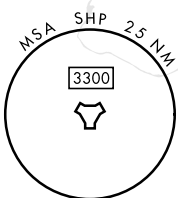
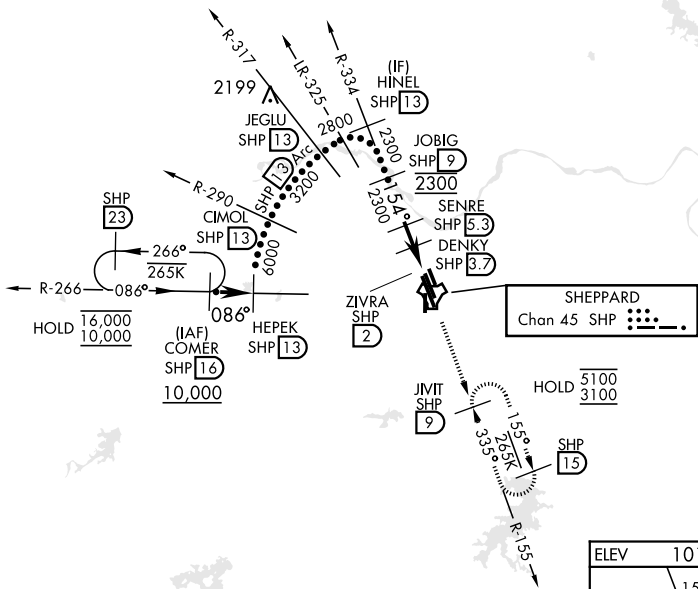
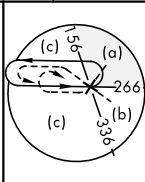
▼ \* When ALS inop, increase CAT CDE vis to 1½ miles.  
\*\* Circling not authorized W of Rwy 15R-33L.



MISSED APPROACH: Climb and maintain 3100, intercept SHP TACAN R-155 to SHP R-155/9 DME (JIVIT) and hold.

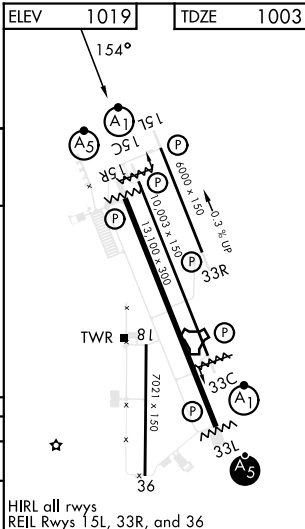
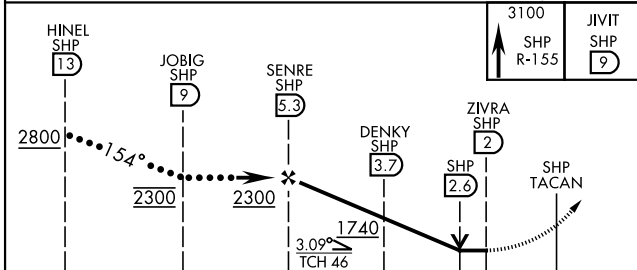
ATIS ★ <b>132.05 269.9</b>	APP CON <b>118.2 269.025</b>	TOWER ★ <b>119.75 0 279.525</b> (CTAF)	GND CON <b>125.5 289.4</b>	CLNC DEL <b>121.2 282.225</b>	ASR
-------------------------------	---------------------------------	---	-------------------------------	----------------------------------	-----

CAUTION: Do not confuse parallel taxiway with Rwy 15R-33L.



ELEV 1019	TDZE 1003
-----------	-----------

EMERG SAFE ALT 100 NM 4600



CATEGORY	C	D	E
S-15C *	1420-¾	417	(500-¾)
CIRCLING **	1480-1½ 461 (500-1½)	2100-3	1081 (1100-3)

HIRL all rwys  
REIL Rwy 15L, 33R, and 36

# HI-TACAN RWY 15C

SC-2, 20 MAR 2025 to 17 APR 2025

SC-2, 20 MAR 2025 to 17 APR 2025