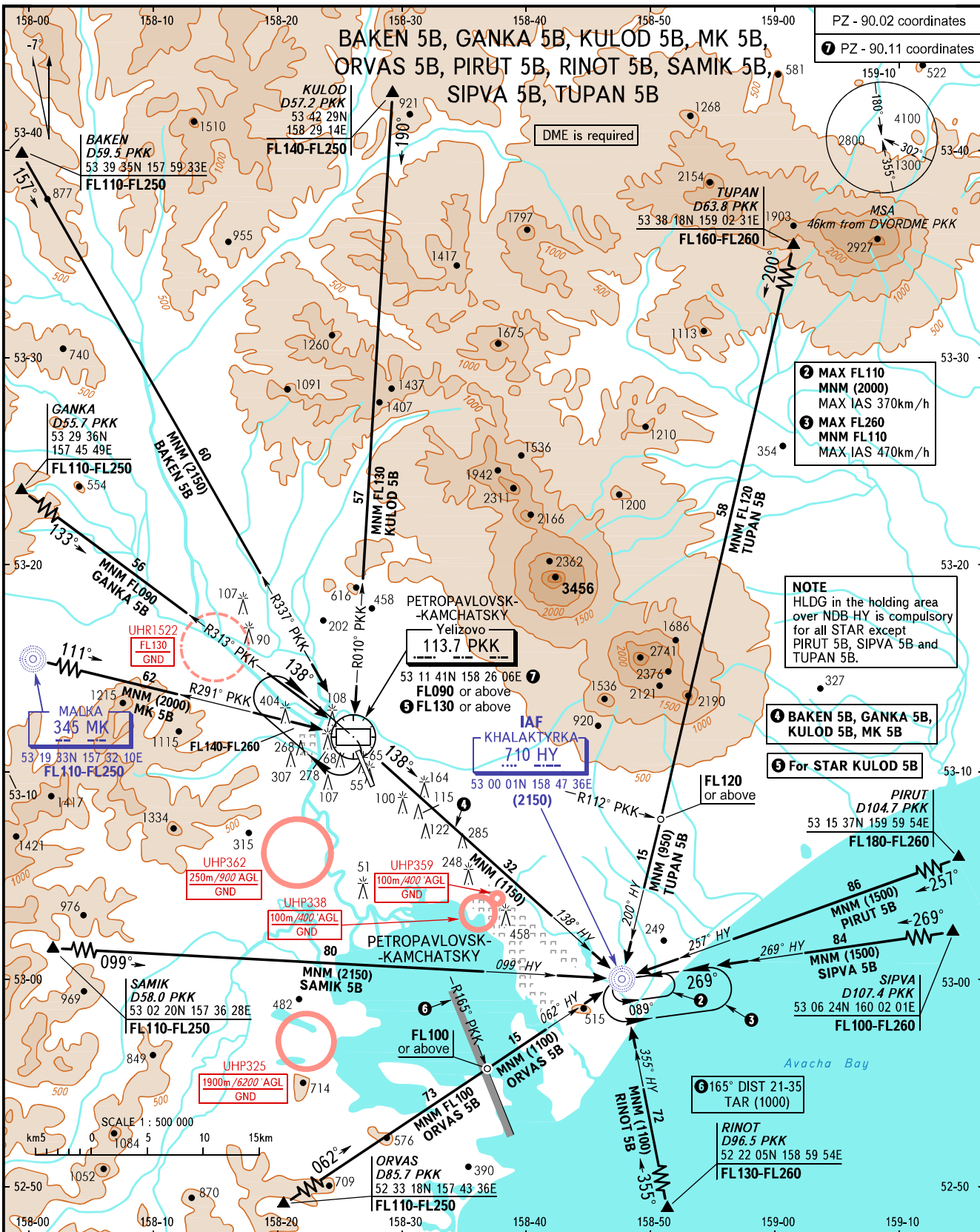


STANDARD ARRIVAL CHART
INSTRUMENT (STAR) - ICAO

TRANSITION
LEVEL: **1**

PETROPAVLOVSK-KAMCHATSKY, RUSSIA
YELIZOVO
RWY 34L



PZ - 90.02 coordinates
1 PZ - 90.11 coordinates

- 2** MAX FL110
MNM (2000)
MAX IAS 370km/h
- 3** MAX FL260
MNM FL110
MAX IAS 470km/h

NOTE
HLDG in the holding area
over NDB HY is compulsory
for all STAR except
PIRUT 5B, SIPVA 5B and
TUPAN 5B.

- 4** BAKEN 5B, GANKA 5B,
KULOD 5B, MK 5B
- 5** For STAR KULOD 5B

6 165° DIST 21-35
TAR (1000)

- 1** TRANSITION LEVEL:
- FL090 when QFE is 756mm mercury column or above;
 - FL100 when QFE is 729mm mercury column or above,
but less than 756mm mercury column;
 - FL110 when QFE is less than 729mm mercury column.

WARNING
Simultaneous holding over NDB HY and over DVORDME PPK
at the same flight level is PROHIBITED.

RADAR START
119.400
118.100

BEARINGS AND TRACKS ARE MAGNETIC
ALTITUDES AND ELEVATIONS IN METRES
DISTANCES IN KILOMETRES

Alt set: -QFE(QNH on req);
-mm(hPa on req).

CHANGE: UHP359, UHP362