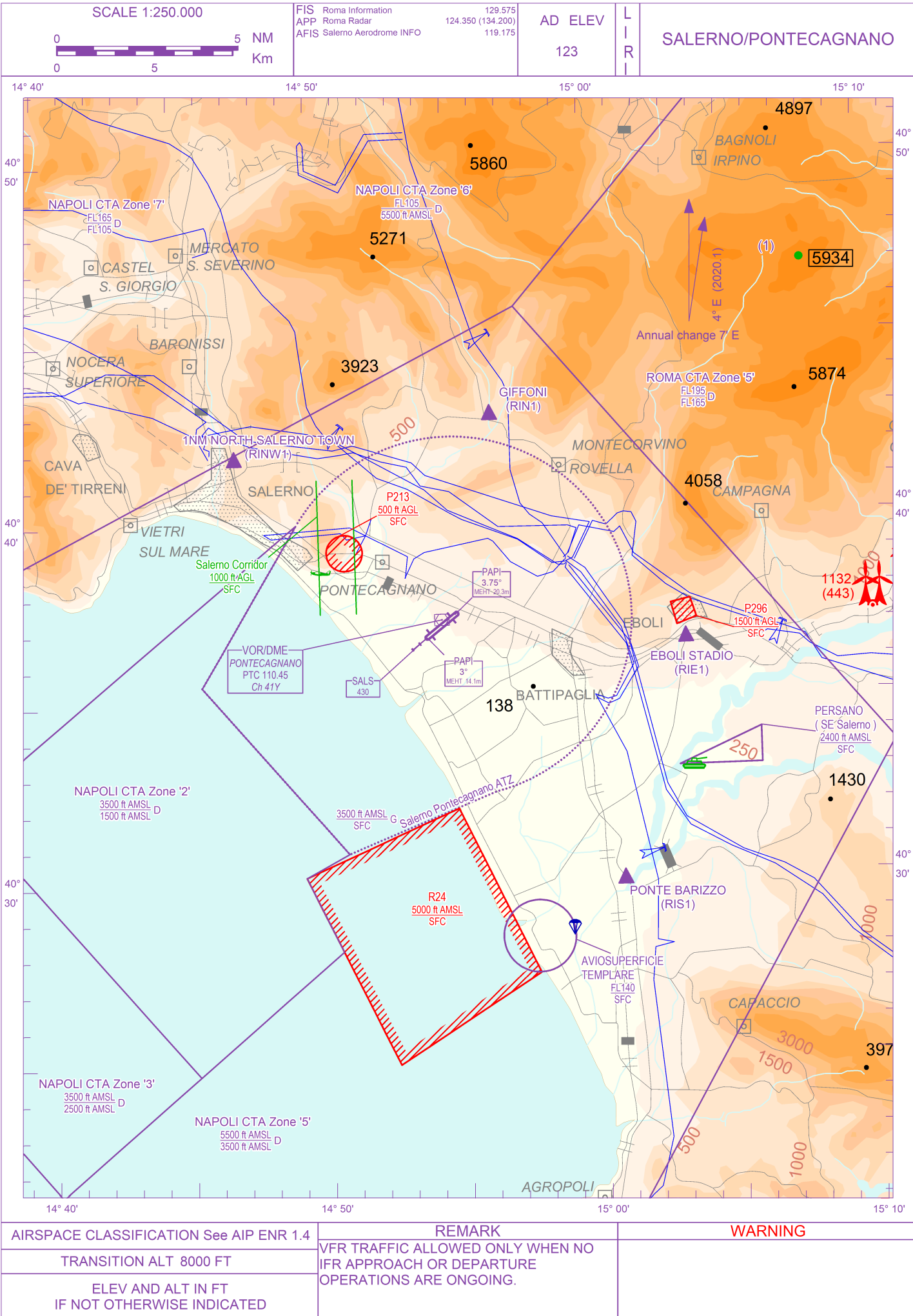


ICAO - VISUAL APPROACH CHART



CHANGE: UPDATED CHART

AIRSPACE CLASSIFICATION See AIP ENR 1.4	REMARK	WARNING
TRANSITION ALT 8000 FT	VFR TRAFFIC ALLOWED ONLY WHEN NO IFR APPROACH OR DEPARTURE OPERATIONS ARE ONGOING.	
ELEV AND ALT IN FT IF NOT OTHERWISE INDICATED		

Obstructions information updated to: ICAO - ANC ITALIA ed. 31/CIGA