

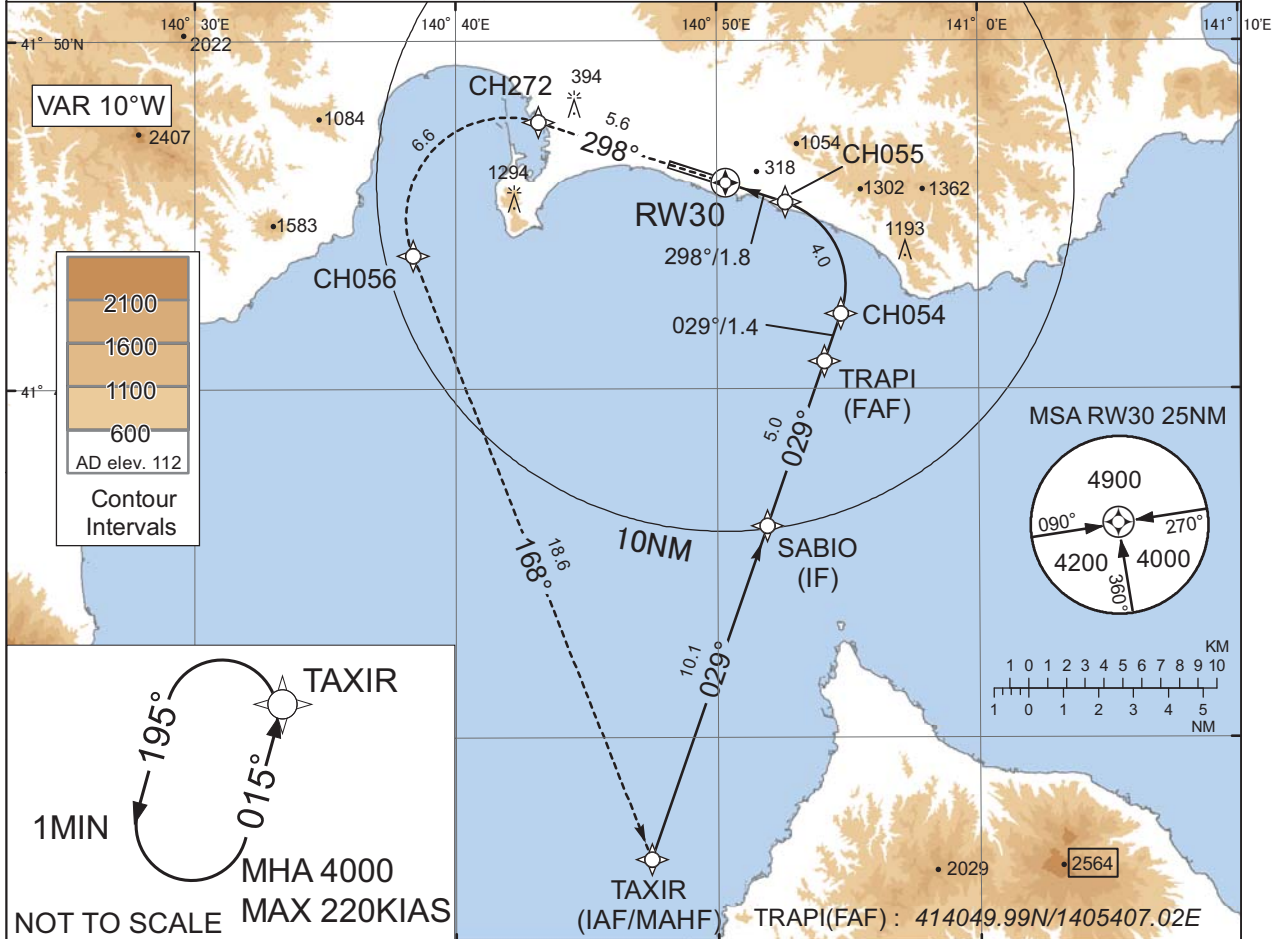
INSTRUMENT APPROACH CHART

RJCH / HAKODATE

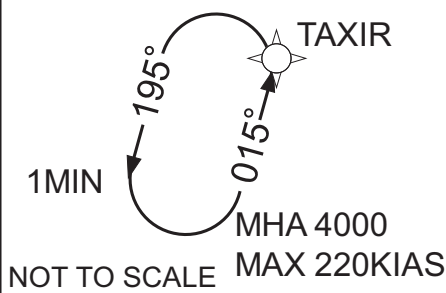
RNP Y RWY30(AR)

SHIRAKAMI APP 120.85 - 120.65	RNP AR RF required.	HAKODATE TWR 118.35 - 126.2	RADAR AVBL ATIS 126.6
----------------------------------	------------------------	--------------------------------	--------------------------

For uncompensated Baro-VNAV systems, procedure not authorized below -20°C / above 45°C

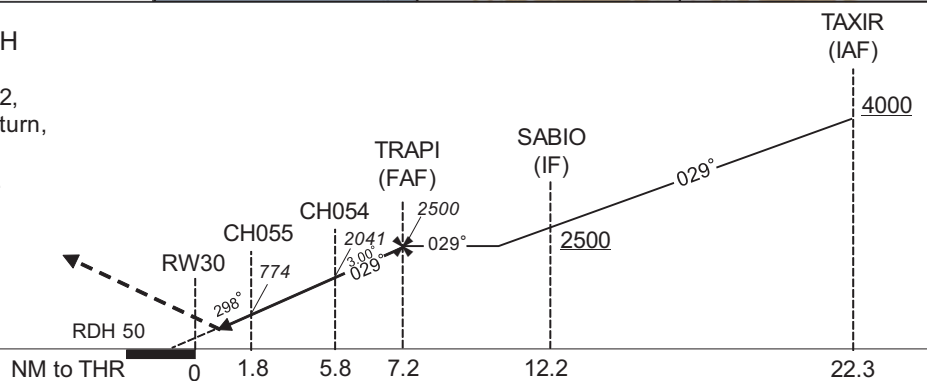


CHANGE : SHIRAKAMI APP established. HAKODATE APP abolished. Description of VAR. Missed APCH PROC.



MISSED APPROACH

Climb to 4000FT, to CH272, to CH056 via fixed radius turn, to TAXIR and hold. Contact SHIRAKAMI APP.



CAT	RNP 0.30	
	DA(H)	CMV
A	-	-
B	-	-
C	486(335)	1000
D	496(345)	1400

Authorization Required

INSTRUMENT APPROACH CHART

RJCH / HAKODATE

RNP Y RWY30(AR)

Coding Table

Serial Number	Path Descriptor	Waypoint Identifier	Fly Over	Course °M(°T)	Magnetic Variation	Distance (NM)	Turn Direction	Altitude (FT)	Speed (KIAS)	VPA/RDH (°/FT)	RNP Value
001	IF	TAXIR	-	-	-9.6	-	-	+4000	-	-	-
002	TF	SABIO	-	029 (019.2)	-9.6	10.1	-	+2500	-	-	1.0
003	TF	TRAPI	-	029 (019.2)	-9.6	5.0	-	2500	-	-	1.0
004	TF	CH054	-	029 (019.2)	-9.6	1.4	-	2041	-	-3.00	0.3
005	RF Center: CHRF3 r=2.50NM	CH055	-	-	-9.6	4.0	L	774	-	-3.00	0.3
006	TF	RW30	Y	298 (288.1)	-9.6	1.8	-	201	-	-3.00/50	0.3
007	TF	CH272	-	298 (288.1)	-9.6	5.6	-	-	-	-	1.0
008	RF Center: CHRF4 r=2.90NM	CH056	-	-	-9.6	6.6	L	-	-	-	1.0
009	TF	TAXIR	-	168 (158.5)	-9.6	18.6	-	4000	-	-	1.0

Path	Waypoint Identifier	Inbound Course °M(°T)	Magnetic Variation	Outbound Time (MIN)	Turn Direction	Minimum Altitude (FT)	Maximum Altitude (FT)	Speed (KIAS)	RNP Value
Hold	TAXIR	015 (005.3)	-9.6	1.0 (-14000)	L	4000	FL140	-220 (-14000)	1.0

Waypoint Coordinates

Waypoint Identifier	Coordinates	RF Arc Center Identifier	Coordinates
TAXIR	412632.43N / 1404728.04E	CHRF3	414301.30N / 1405136.09E
SABIO	413606.58N / 1405154.81E	CHRF4	414456.26N / 1404159.49E
TRAPI	414049.99N / 1405407.02E		
CH054	414211.71N / 1405445.20E		
CH055	414524.03N / 1405238.26E		
RW30	414557.54N / 1405021.00E		
CH272	414742.10N / 1404311.31E		
CH056	414352.33N / 1403822.94E		

CHANGE : VAR: Course FM RW30 to CH272. RNAV HLDG established (TAXIR).