

STANDARD DEPARTURE CHART - INSTRUMENT

RJDC / YAMAGUCHI-UBE

SID

UBE REVERSAL TWO DEPARTURE

RWY07 : Climb RWY HDG to 500FT, turn right HDG178°...

RWY25 : Climb RWY HDG to 500FT, turn left HDG088°...

...to intercept and proceed via UBE R133 to 4000FT, turn right, direct to UBE VOR/DME.

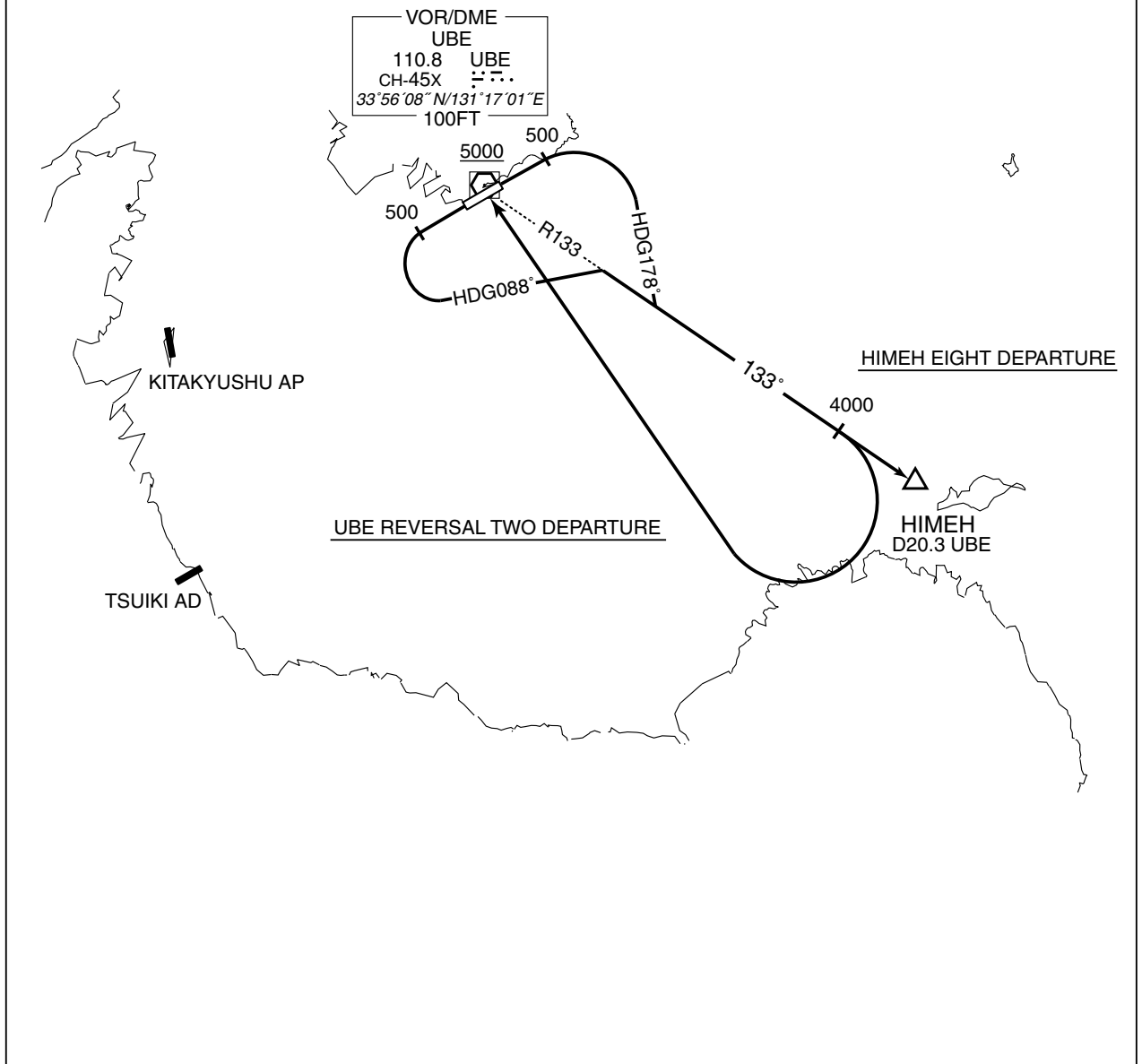
Cross UBE VOR/DME at or above 5000FT.

HIMEH EIGHT DEPARTURE

RWY07 : Climb RWY HDG to 500FT, turn right HDG178°...

RWY25 : Climb RWY HDG to 500FT, turn left HDG088°...

...to intercept and proceed via UBE R133 to HIMEH.



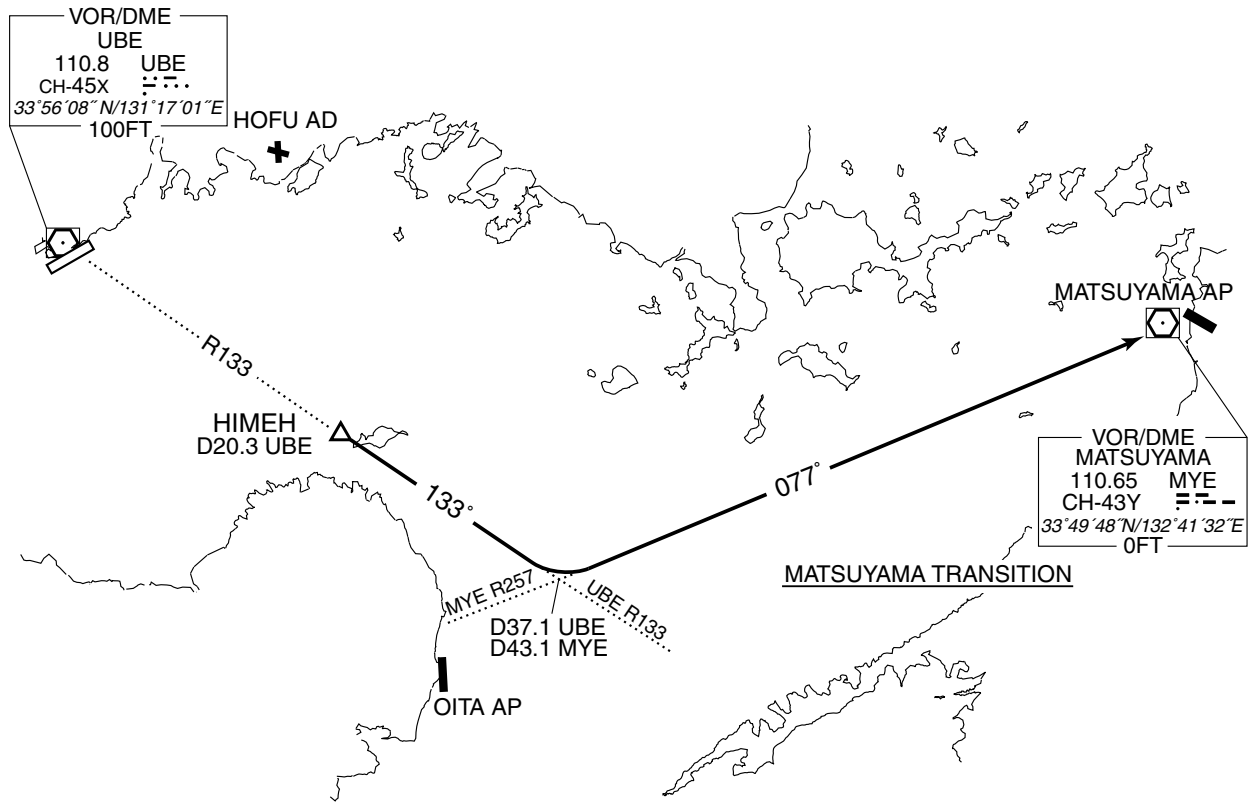
STANDARD DEPARTURE CHART - INSTRUMENT

RJDC / YAMAGUCHI-UBE

TRANSITION

MATSUYAMA TRANSITION

From over HIMEH, via UBE R133 to intercept and proceed via MYE R257 to MYE VOR/DME.



STANDARD DEPARTURE CHART - INSTRUMENT

RJDC / YAMAGUCHI-UBE

TRANSITION

MARCO TRANSITION

From over HIMEH, via UBE R133 to intercept and proceed via TFE R038 to MARCO.

MUSASHI TRANSITION

From over HIMEH, via TFE R346 to TFE VOR/DME.

