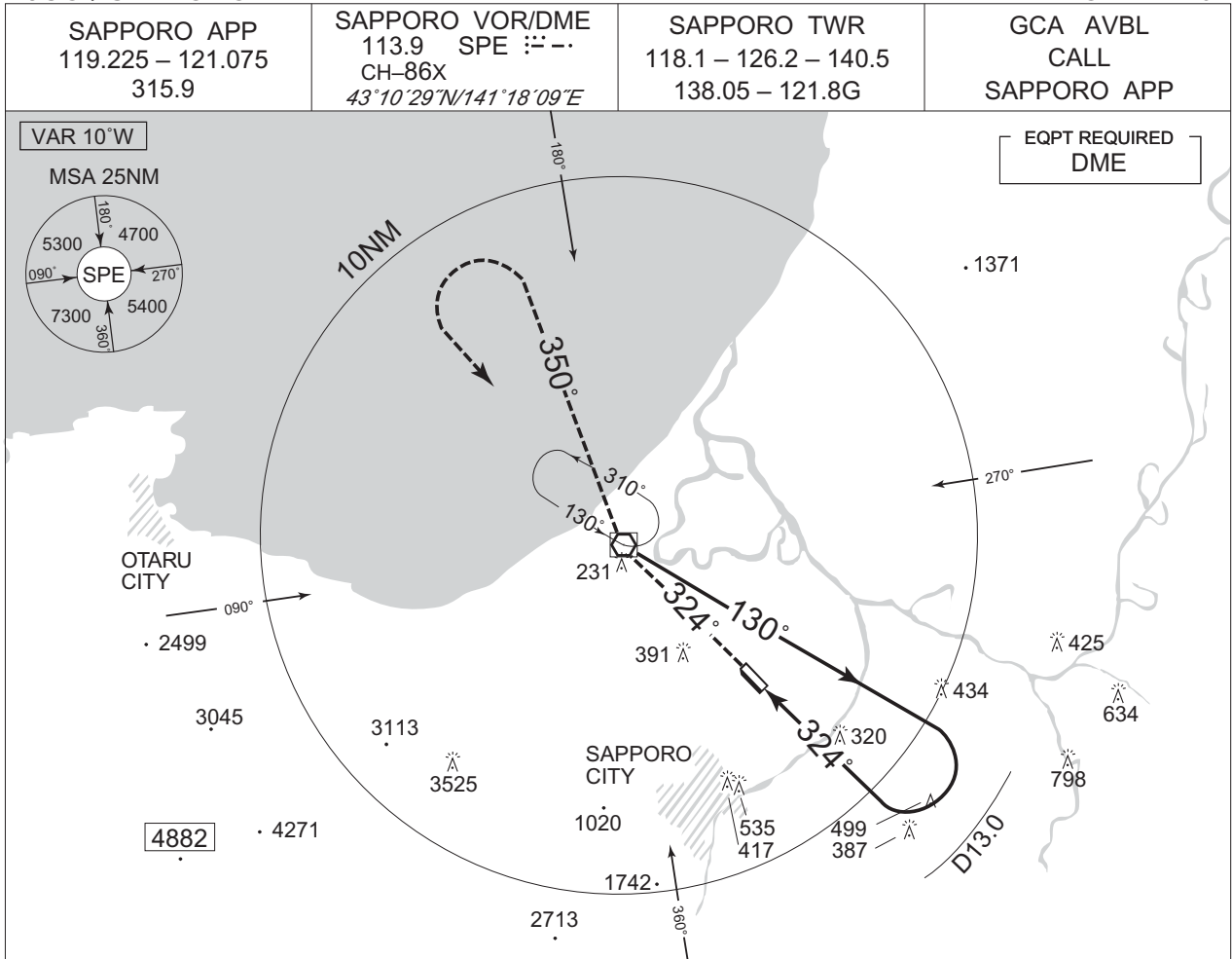


INSTRUMENT APPROACH CHART

RJCO / SAPPORO

VOR RWY32



**MISSED APPROACH**  
At 5.3DME prior to SPE VOR/DME climb to 4000FT via SPE R144 then SPE R350, turn left within SPE 10.0DME, proceed to SPE VOR/DME and hold. Contact SAPPORO APP.

DME to SPE	0	4.4	5.3	9.0	
NM to THR	0	0	0	3.7	

	MINIMA	THR elev. 27	AD elev. 26		
CAT			CIRCLING		
	MDA(H)	RVR/CMV	MDA(H)	VIS	
A	620 (594)	1500	620 (594)	1600	
B		2000		2400	
C	-	-	-	-	
D	-	-	-	-	

CHANGE : VAR.

Circling to EAST side of RWY only.