

STANDARD ARRIVAL CHART -INSTRUMENT

RJOK / KOCHI

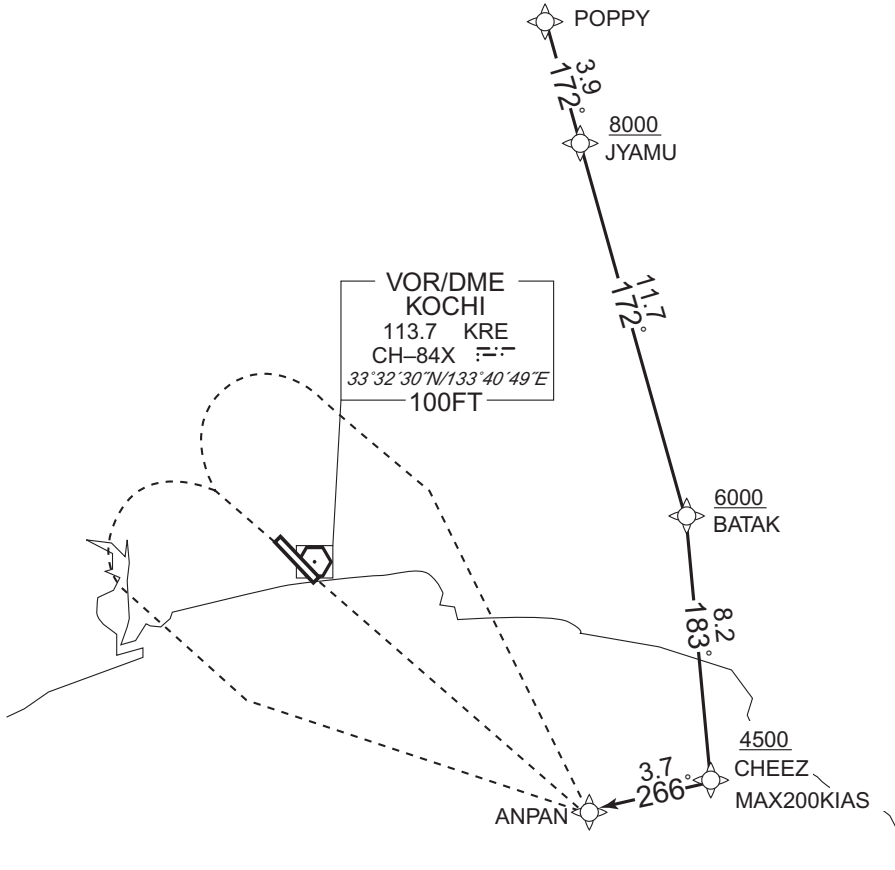
RNAV STAR

YOSAKOI NORTH ARRIVAL

RNAV 1

Note 1) DME/DME/IRU or GNSS required.
2) RADAR service required.

VAR 8° W



From POPPY, to JYAMU at or above 8000FT, to BATAK at or above 6000FT, to CHEEZ at or above 4500FT, to ANPAN.

Critical DME	SUC	BATAK - ANPAN
	KRE	BATAK - ANPAN
DME GAP	-	
Inappropriate Nav aids	See AD1.1.6.10.3. Inappropriate NAV AIDs for RNAV1	

CHANGE : VAR. PROC course.

Serial Number	Path Descriptor	Waypoint Identifier	Fly Over	Course [°M(°T)]	Magnetic Variation	Distance (NM)	Turn Direction	Altitude (FT)	Speed (KIAS)	Vertical Angle	Navigation Specification
001	IF	POPPY	-	-	-7.9	-	-	-	-	-	RNAV1
002	TF	JYAMU	-	172 (164.2)	-7.9	3.9	-	+8000	-	-	RNAV1
003	TF	BATAK	-	172 (164.2)	-7.9	11.7	-	+6000	-	-	RNAV1
004	TF	CHEEZ	-	183 (175.5)	-7.9	8.2	-	+4500	-200	-	RNAV1
005	TF	ANPAN	-	266 (257.6)	-7.9	3.7	-	-	-	-	RNAV1

STANDARD ARRIVAL CHART -INSTRUMENT

RJOK / KOCHI

RNAV STAR

Waypoint Coordinates

Waypoint Identifier	Coordinates	Waypoint Identifier	Coordinates
POPPY	334905.1N / 1334915.3E	CHEEZ	332555.0N / 1335507.1E
JYAMU	334518.9N / 1335032.4E	ANPAN	332507.5N / 1335048.5E
BATAK	333404.3N / 1335421.3E		

CHANGE : Waypoint Coordinates added.