

STANDARD DEPARTURE CHART-INSTRUMENT

RJSN / NIIGATA

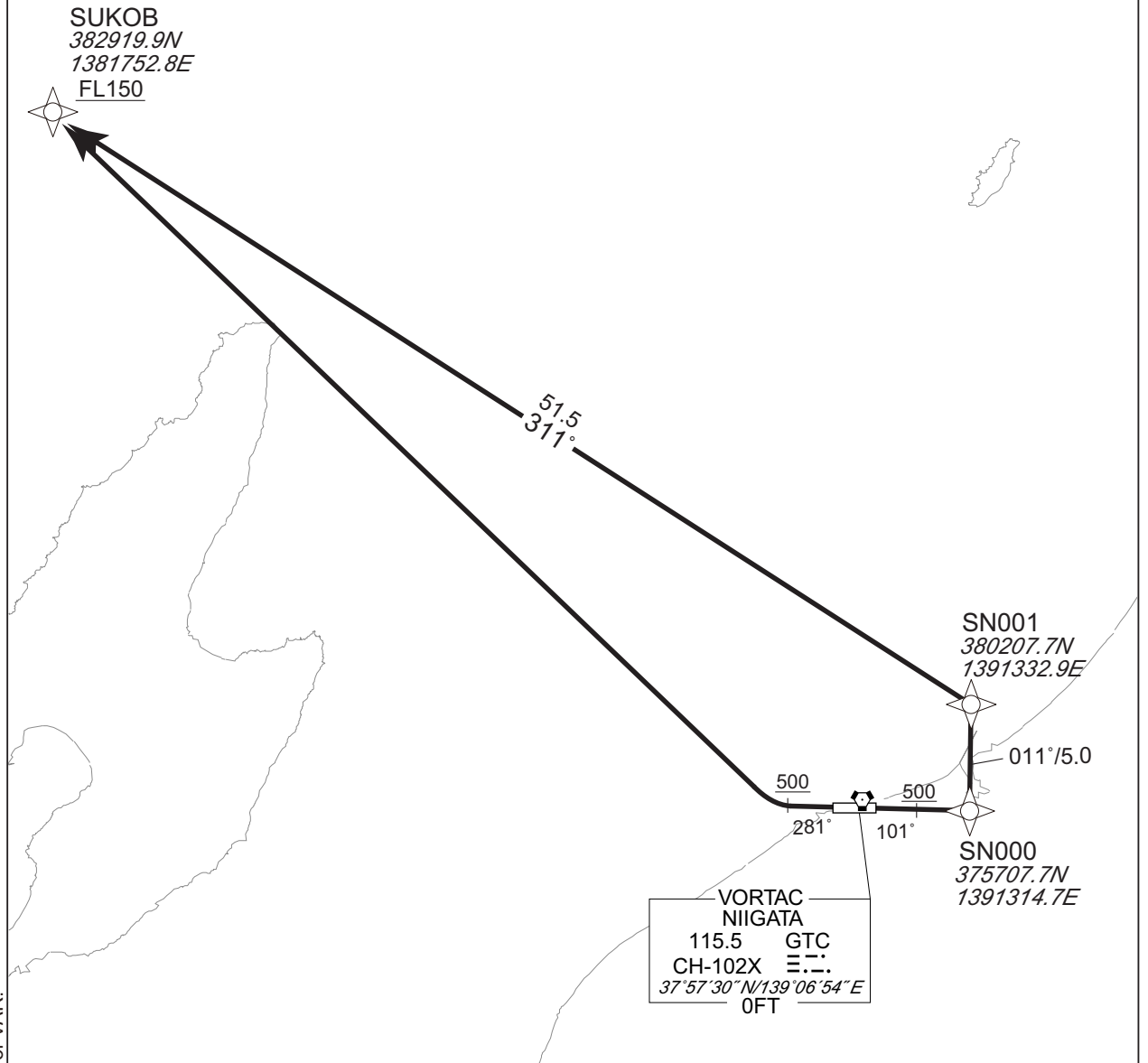
RNAV SID

SUKOB ONE DEPARTURE

RNAV 1

NOTE 1 ) DME/DME/IRU or GNSS required. ※The aircraft equipped with only DME/DME/IRU must be able to update its position without delay at the starting point of take-off roll. 2 ) RADAR service required.	Critical DME	RWY10 : GTC : 10.0NM to SUKOB - SUKOB NTE : 10.0NM to SUKOB - SUKOB RWY28 : GTC : 15.0NM to SUKOB - SUKOB NTE : 15.0NM to SUKOB - SUKOB
	DME GAP	RWY10 : DER - 10.0NM to SUKOB RWY28 : DER - 15.0NM to SUKOB
	Inappropriate Nav aids	See AD1.1.6.10.3. Inappropriate NAVAIDS for RNAV1.

VAR 9°W



CHANGE : Description of VAR.

RWY10 : Climb on HDG101° at or above 500FT, direct to SN000, to SN001, to SUKOB at or above FL150.  
 RWY28 : Climb on HDG281° at or above 500FT, turn right direct to SUKOB at or above FL150.  
 Note RWY10 : 5.0% climb gradient required up to 500FT.

## STANDARD DEPARTURE CHART-INSTRUMENT

RJSN/ NIIGATA

RNAV SID

SUKOB ONE DEPARTURE

## RWY10

Serial Number	Path Descriptor	Waypoint Identifier	Fly Over	Course °M(°T)	Magnetic Variation	Distance (NM)	Turn Direction	Altitude (FT)	Speed (KIAS)	Vertical Angle	Navigation Specification
001	VA	—	—	101 (092.7)	-8.6	—	—	+500	—	—	RNAV1
002	DF	SN000	—	—	-8.6	—	—	—	—	—	RNAV1
003	TF	SN001	—	011 (002.7)	-8.6	5.0	—	—	—	—	RNAV1
004	TF	SUKOB	—	311 (302.2)	-8.6	51.5	—	+FL150	—	—	RNAV1

## RWY28

Serial Number	Path Descriptor	Waypoint Identifier	Fly Over	Course °M(°T)	Magnetic Variation	Distance (NM)	Turn Direction	Altitude (FT)	Speed (KIAS)	Vertical Angle	Navigation Specification
001	VA	—	—	281 (272.7)	-8.6	—	—	+500	—	—	RNAV1
002	DF	SUKOB	—	—	-8.6	—	R	+FL150	—	—	RNAV1

CHANGE : New PROC.