

RIVER FOUR DEPARTURE

PATRICK SFB (KCOF)

COCOA BEACH, FLORIDA

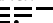
(USAF)

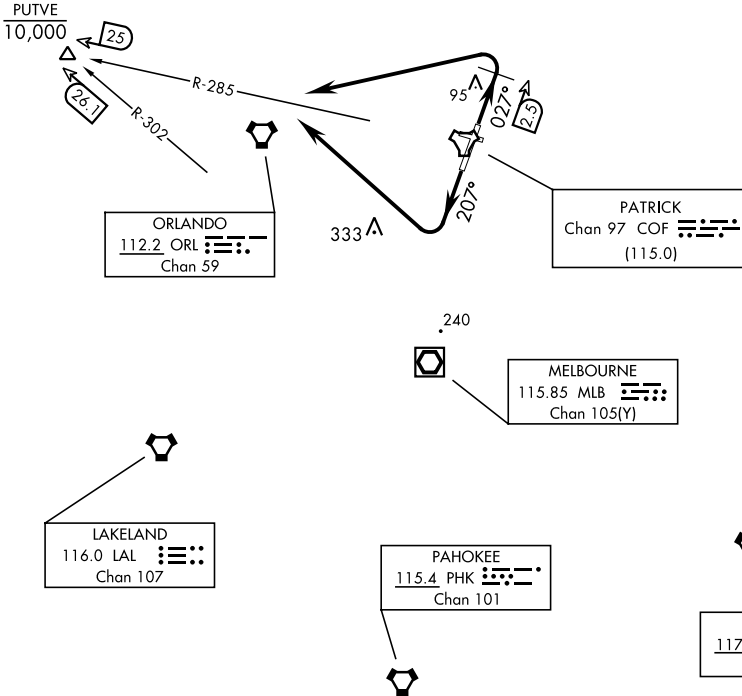
ATIS ★
 119.175 273.5
 CLNC DEL ★
 118.4 289.4
 GND CON ★
 124.35 335.8
 TOWER ★
 133.75 269.375
 ORLANDO DEP CON ★
 132.65 281.425

DME required

Rwy	Knots	60	120	180	240	300	360
03/21	V/V(fpm)	210	420	630	840	1050	1260
Minimum Climb Rate to 500							

**TOP ALTITUDE
2000**

ORMOND BEACH
 112.6 OMN 
 Chan 73



NOTE: Chart not to scale.

DEPARTURE ROUTE DESCRIPTION

Expect clearance to filed altitude/flight level 10 minutes after departure.

TAKEOFF RWY 03: Climb on hdg 027° to COF TACAN 2.5 DME, then left turn to intercept COF R-285 to cross PUTVE (COF 25 DME/MLB VOR/DME 26.1 DME) at or below 10,000, maintain 2000 or higher as assigned.

TAKEOFF RWY 21: Climb on hdg 207°, then right turn to intercept COF TACAN R-285 to cross PUTVE (COF 25 DME/MLB VOR/DME 26.1 DME) at or below 10,000, maintain 2000 or higher as assigned.

RIVER FOUR DEPARTURE

Amdt 1 28NOV24

COCOA BEACH, FLORIDA

PATRICK SFB (KCOF)

SE-3, 20 MAR 2025 to 17 APR 2025

SE-3, 20 MAR 2025 to 17 APR 2025