

STUNO ONE DEPARTURE (RNAV)

SE-2, 20 MAR 2025 to 17 APR 2025

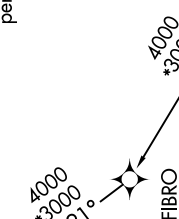
TOP ALTITUDE:
4000

D-ATIS 124.75
CLNC DEL 127.325 291.65
CPDC
GND CON 121.9 348.6
CHARLESTON TOWER 126.0 239.0
CHARLESTON DEP CON 120.7 306.925

COLLIERS
IRQ

TAKEOFF MINIMUMS:
Rwys 15, 33: Standard.
Rwys 3, 21: Standard with minimum climb of 500'
per NM to 560.

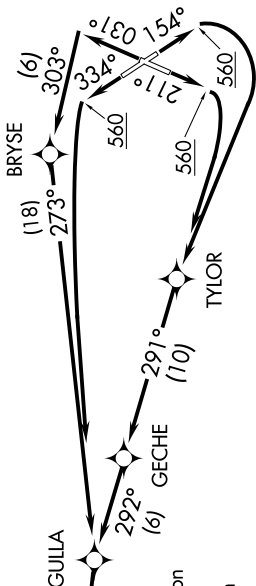
per NM to 560.



DEPARTURE ROUTE DESCRIPTION

TAKEOFF RUNWAY 3: Climb on heading 031° to intercept course 303° to BRYSE, then on depicted route to STUNO, thence
 TAKEOFF RUNWAY 15: Climb on heading 154° to 560, then right turn direct TYLOR, then on depicted route to STUNO, thence
 TAKEOFF RUNWAY 21: Climb on heading 211° to 560, then right turn direct TYLOR, then on depicted route to STUNO, thence
 TAKEOFF RUNWAY 33: Climb on heading 334° to 560, then left turn direct GULLA, then on depicted route to STUNO, thence
 on assigned transition. Maintain 4000 expect ATC clearance to filed altitude/flight level within ten (10) minutes after departure.

ALLENDALE TRANSITION (STUNO1.ALD)
 COLLIERS TRANSITION (STUNO1.IRQ)
 DUBLIN TRANSITION (STUNO1.DBN)



NOTE: Transponder code will be issued by Charleston clearance delivery.
 NOTE: If unable to accept climb rate, advise ATC on initial contact.
 NOTE: DME/DME/IRU or GPS required.
 NOTE: RNAV 1.
 NOTE: RADAR required for non-GPS equipped aircraft.

NOTE: Chart not to scale.

STUNO ONE DEPARTURE (RNAV)

(STUNO1.STUNO) 07OCT21

SE-2, 20 MAR 2025 to 17 APR 2025