

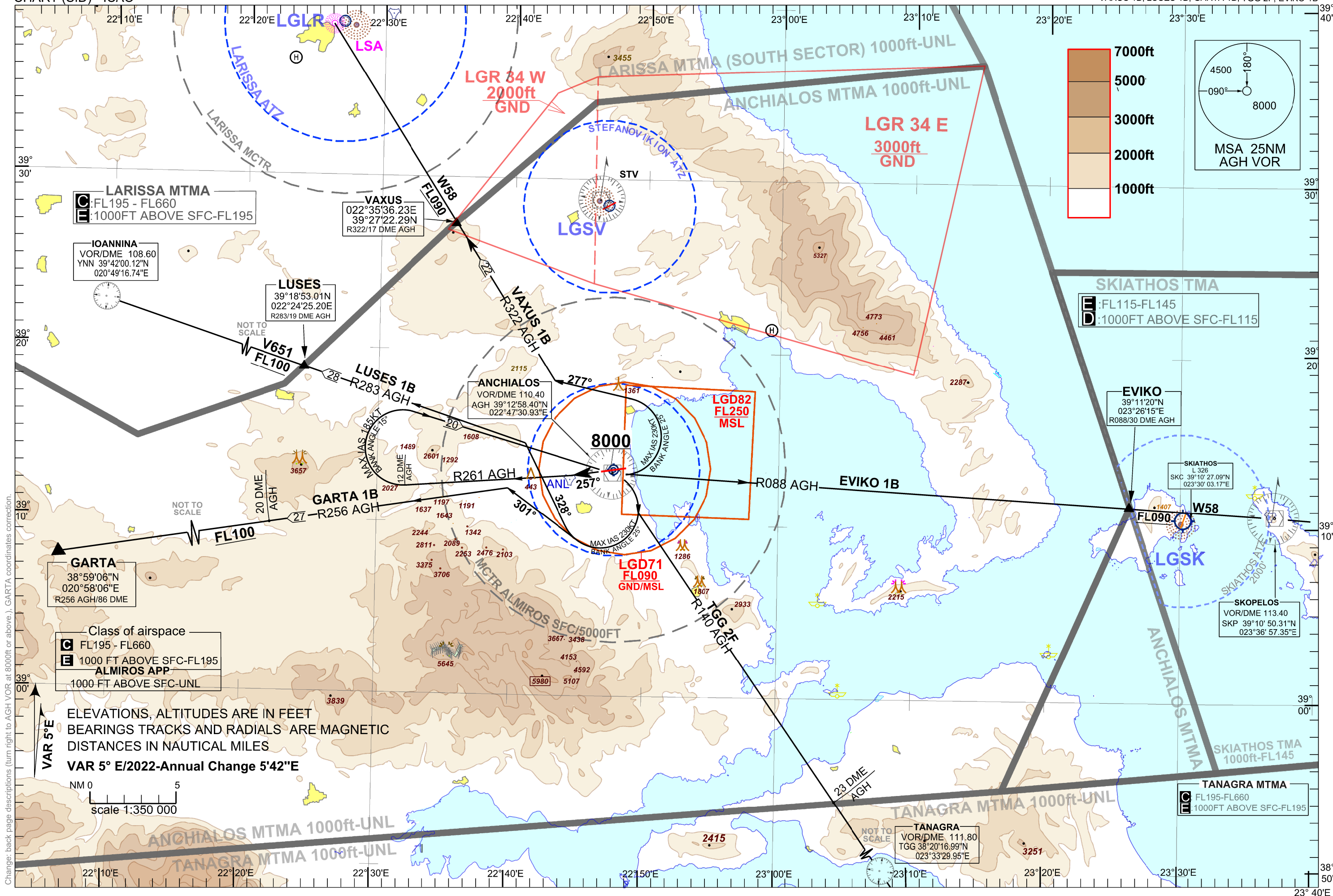
STANDARD DEPARTURE
CHART (SID) - ICAO

TRANSITION ALTITUDE 9000ft

ALMIROS APP 120.350
ALMIROS TWR 122.100

AD 2-LGBL-SID-2
ALMIROS/N. ANCHIALOS AIRPORT
AGH VOR - RWY 26

VAXUS 1B, LUSES 1B, GARTA 1B, TGG 2F, EVIKO 1B



ALMIROS / N. ANCHIALOS AIRPORT
AGH VOR/DME - RWY 26

SIDs : VAXUS 1B, LUSES 1B, GARTA 1B, TGG 2F, EVIKO 1B.

GENERAL:

When for these SIDs an altitude higher than the transition altitude is designated, then ATC unit shall specify an equivalent flight level.

VAXUS 1B:

For this SID a minimum PDG (Procedure Design Gradient) of 5,6% (340 ft/nm) is required up to 4100ft for obstacles and then up to FL090 for ATC purposes.

“Climb straight ahead on track 257⁰, intercept and follow R261 AGH. At R261 AGH / 12 DME Fix turn **right** (IAS Max 185kt, Bank Angle 15⁰) **to AGH VOR at 8000ft or above.**

At AGH VOR turn **left** (IAS Max 230kt Bank Angle 25⁰) to track 277⁰, intercept and follow R322 AGH to VAXUS at FL 090 or above to join AWY W58.”

LUSES 1B:

For this SID a minimum PDG (Procedure Design Gradient) of 5,6% (340 ft/NM) is required up to 4100ft for obstacles and then up to FL 100 for ATC purposes.

“Climb straight ahead on track 257⁰, intercept and follow R261 AGH. At R261 AGH / 12 DME Fix turn **right** (IAS Max 185kt, Bank Angle 15⁰) **to AGH VOR at 8000ft or above.**

At AGH VOR turn **right** (IAS Max 230kt, Bank Angle 25⁰) to track 328⁰, intercept and follow R283 AGH to LUSES at FL 100 or above to join AWY V651.”

GARTA 1B:

For this SID a minimum PDG (Procedure Design Gradient) of 5,6% (340 ft/nm) is required up to 4100ft for obstacles and then up to FL 100 for ATC purposes.

“Climb straight ahead on track 257⁰, intercept and follow R261 AGH. At R261 AGH / 12 DME Fix turn **right** (IAS Max 185kt, Bank Angle 15⁰) **to AGH VOR at 8000ft or above.**

At AGH VOR turn **right** (IAS Max 230kt, Bank Angle 25⁰) to track 301⁰, intercept and follow R256 AGH to GARTA.

Arrange to pass R256 AGH / 20 DME. Fix at FL 100 or above.”

TGG 2F:

For this SID a minimum PDG (Procedure Design Gradient) of 5,6% (340 ft/NM) is required up to 4100ft for obstacles and then up to 8000ft for ATC purposes.

“Climb straight ahead on track 257⁰, intercept and follow R261 AGH. At R261 AGH / 12 DME Fix turn **right** (IAS Max 185kt, Bank Angle 15⁰) **to AGH VOR at 8000ft or above.**

At AGH VOR turn **right** (IAS Max 230kt, Bank Angle 25⁰), intercept and follow R140 AGH to R140 AGH / 23 DME. Fix.”

EVIKO 1B:

For this SID a minimum PDG (Procedure Design Gradient) of 5,6% (340 ft/NM) is required up to 4100ft for obstacles and then up to 9000ft for ATC purposes.

“Climb straight ahead on track 257⁰, intercept and follow R261 AGH. At R261 AGH / 12 DME Fix turn **right** (IAS Max 185kt, Bank Angle 15⁰) **to AGH VOR at 8000ft or above.**

At AGH VOR intercept and follow R088 AGH to EVIKO at FL090 or above to join AWY W58.”