

STANDARD ARRIVAL CHART - INSTRUMENT

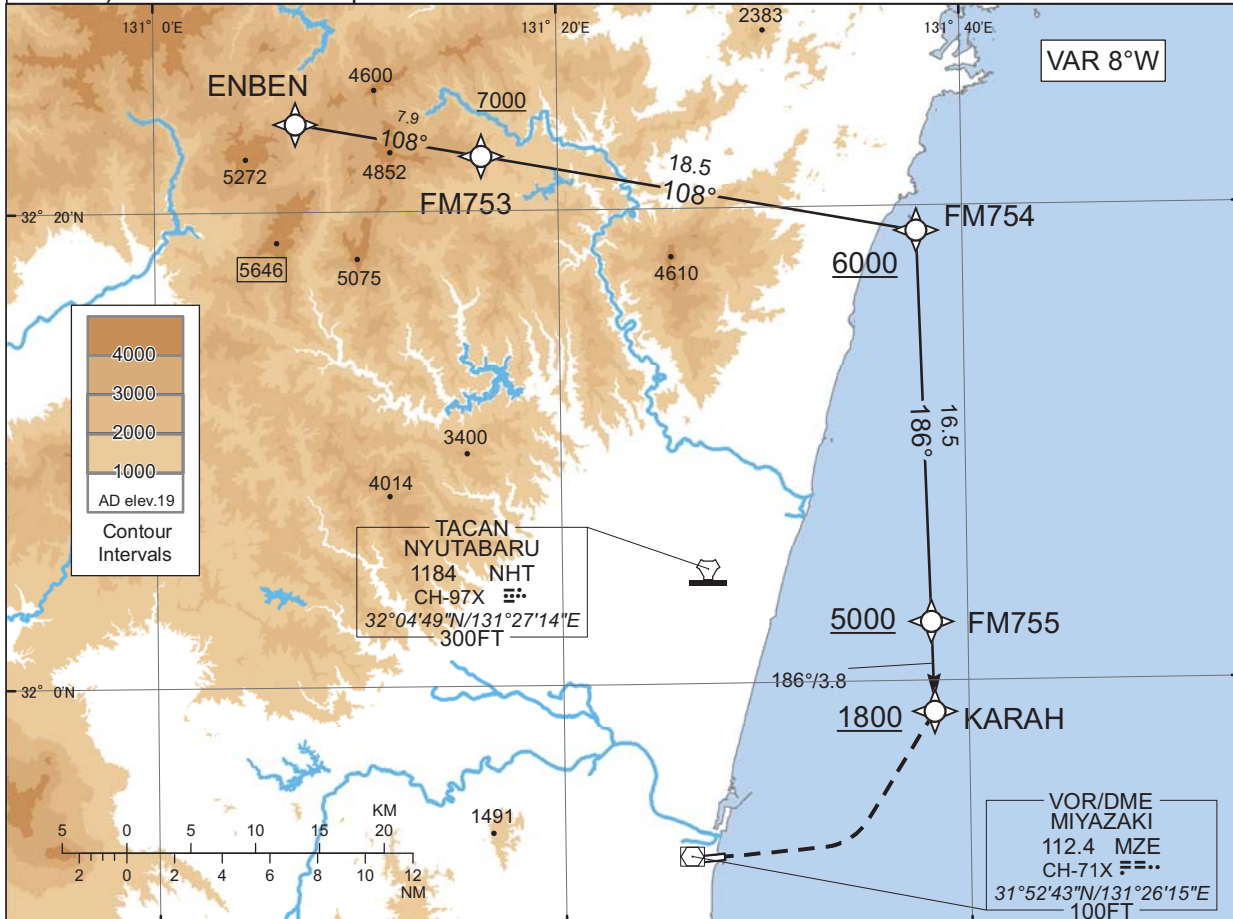
RJFM / MIYAZAKI

RNAV STAR RWY27

KARAH ARRIVAL

RNAV1

Note 1) DME/DME/IRU or GNSS required.
2) RADAR service required.



From ENBEN, to FM753 at or above 7000FT, to FM754 at or above 6000FT, to FM755 at or above 5000FT, to KARAH at or above 1800FT.

Critical DME	SUC : 15NM to FM754 - 10NM to FM755 MZE : 14NM to FM755 - 2NM to FM755 NHT : 5NM to FM755 - KARAH
DME GAP	-
Inappropriate Nav aids	See AD1.1.6.10.3. Inappropriate NAVAIDS for RNAV1

Serial Number	Path Descriptor	Waypoint Identifier	Fly Over	Course °M(°T)	Magnetic Variation	Distance (NM)	Turn Direction	Altitude (FT)	Speed (KIAS)	Vertical Angle	Navigation Specification
001	IF	ENBEN	-	-	-7.5	-	-	-	-	-	RNAV1
002	TF	FM753	-	108 (100.3)	-7.5	7.9	-	+7000	-	-	RNAV1
003	TF	FM754	-	108 (100.3)	-7.5	18.5	-	+6000	-	-	RNAV1
004	TF	FM755	-	186 (178.6)	-7.5	16.5	-	+5000	-	-	RNAV1
005	TF	KARAH	-	186 (178.6)	-7.5	3.8	-	+1800	-	-	RNAV1

Waypoint Coordinates

Waypoint Identifier	Coordinates	Waypoint Identifier	Coordinates
ENBEN	322342.1N / 1310702.4E	FM755	320228.4N / 1313812.1E
FM753	322217.4N / 1311613.8E	KARAH	315841.4N / 1313818.6E
FM754	321856.5N / 1313743.8E		

CHANGE : PROC renamed. PROC course. VAR. Waypoint Coordinates added.