

STANDARD DEPARTURE CHART - INSTRUMENT

RJDT / TSUSHIMA

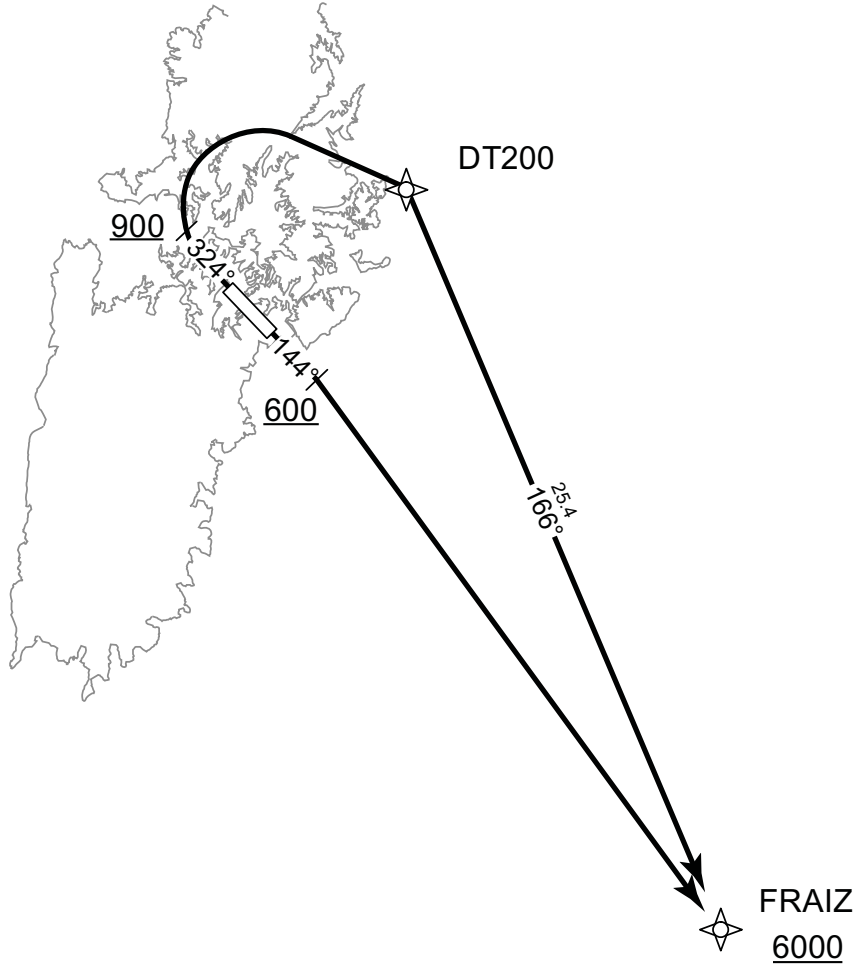
RNAV SID

FRAIZ ONE DEPARTURE

RNP1

Note GNSS required.

VAR 8°W



RWY14 : Climb on HDG144° at or above 600FT, turn right direct to FRAIZ at or above 6000FT.

RWY32 : Climb on HDG324° at or above 900FT, turn right direct to DT200, to FRAIZ at or above 6000FT.

Note RWY32 :5.2% climb gradient required up to 900FT.
OBST ALT 262FT located at 0.2NM 292° FM end of RWY32.

CHANGE : Latitude and longitude deleted.

STANDARD DEPARTURE CHART - INSTRUMENT

RJDT / TSUSHIMA

RNAV SID

FRAIZ ONE DEPARTURE

RWY14

Serial Number	Path Descriptor	Waypoint Identifier	Fly Over	Course °M(°T)	Magnetic Variation	Distance (NM)	Turn Direction	Altitude (FT)	Speed (KIAS)	Vertical Angle	Navigation Specification
001	VA	-	-	144 (136.2)	-8.2	-	-	+600	-	-	RNP1
002	DF	FRAIZ	-	-	-8.2	-	R	+6000	-	-	RNP1

RWY32

Serial Number	Path Descriptor	Waypoint Identifier	Fly Over	Course °M(°T)	Magnetic Variation	Distance (NM)	Turn Direction	Altitude (FT)	Speed (KIAS)	Vertical Angle	Navigation Specification
001	VA	-	-	324 (316.2)	-8.2	-	-	+900	-	-	RNP1
002	DF	DT200	-	-	-8.2	-	R	-	-	-	RNP1
003	TF	FRAIZ	-	166 (157.4)	-8.2	25.4	-	+6000	-	-	RNP1

Waypoint Coordinates

Waypoint Identifier	Coordinates
DT200	342114.7N / 1292521.1E
FRAIZ	335748.9N / 1293707.1E

CHANGE : Waypoint Coordinates added.