

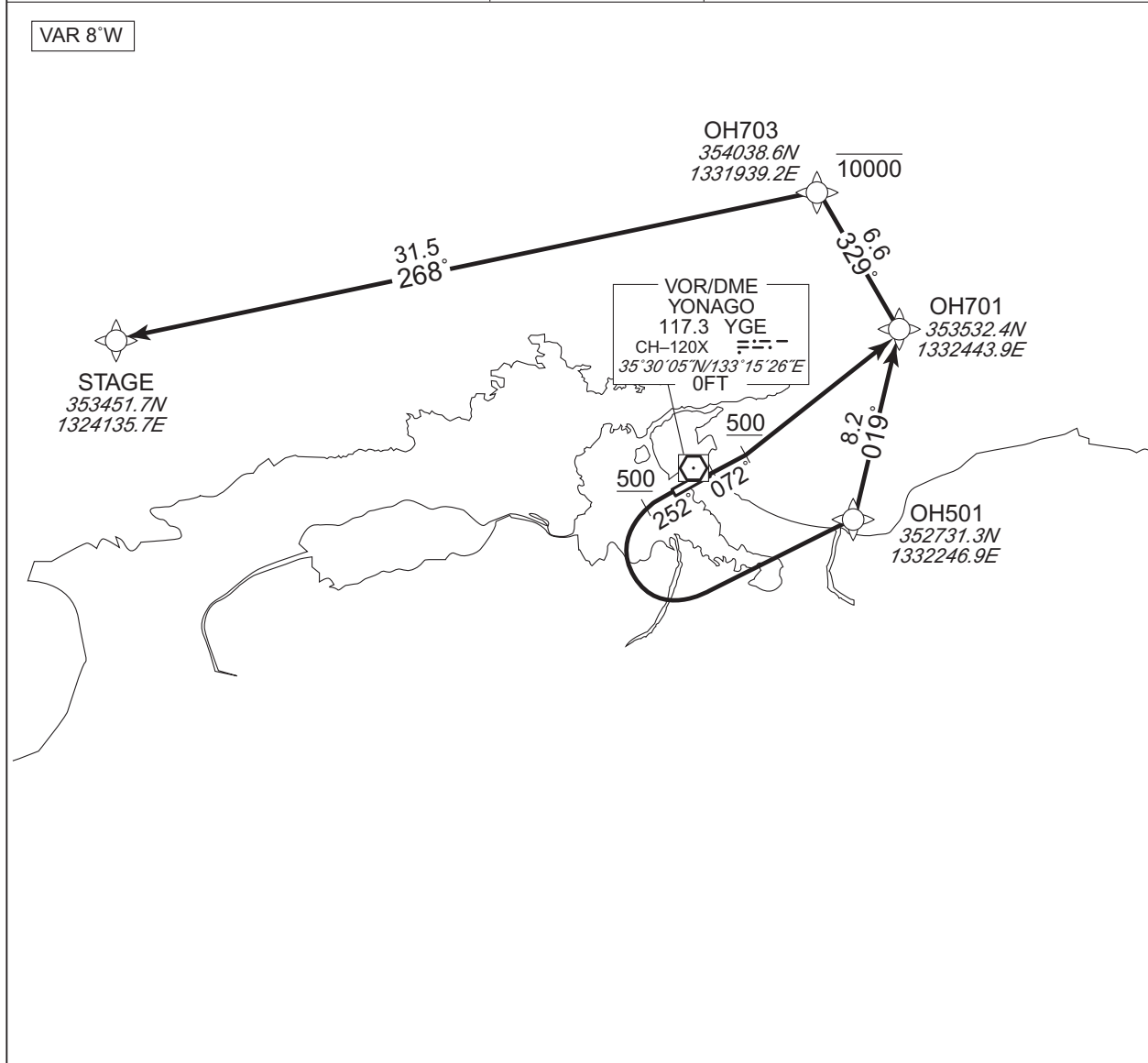
STANDARD DEPARTURE CHART - INSTRUMENT

RJOH / MIHO

RNAV SID

STAGE TWO DEPARTURE		RNAV1
Note 1) DME/DME/IRU or GNSS required. ※The aircraft equipped with only DME/DME/IRU must be able to update its position without delay at the starting point of take-off roll. 2) RADAR service required.	Critical DME	RWY07 : OIE : 12.6NM to STAGE - STAGE RWY25 : JET : 10.0NM to OH501 - 6.0NM to OH501 OIE : 6.0NM to OH501 -4.0NM to OH501 OH501 - OH701 12.6NM to STAGE - STAGE
	DME GAP	RWY07 :DER - 8.7NM to OH701 RWY25 :DER - 10.0NM to OH501
	Inappropriate Navaids	See AD1.1.6.10.3. Inappropriate NAVAIDS for RNAV1

VAR 8°W



CHANGE : Description of VAR and PROC name.

RWY07 : Climb on HDG072° at or above 500FT, direct to OH701, to OH703 at or below 10000FT, to STAGE.

RWY25 : Climb on HDG252° at or above 500FT, turn left direct to OH501, to OH 701, to OH703 at or below 10000FT, to STAGE.

NOTE RWY25 : 5.0% climb gradient required up to 700FT.
 OBST ALT 1182FT located at 6.2NM 214° FM end of RWY25.

STANDARD DEPARTURE CHART - INSTRUMENT

RJOH / MIHO

RNAV SID

STAGE TWO DEPARTURE

RWY07

Serial Number	Path Descriptor	Waypoint Identifier	Fly Over	Course °M(°T)	Magnetic Variation	Distance (NM)	Turn Direction	Altitude (FT)	Speed (KIAS)	Vertical Angle	Navigation Specification
001	VA	—	—	072 (063.9)	-8.3	—	—	+500	—	—	RNAV1
002	DF	OH701	—	—	-8.3	—	—	—	—	—	RNAV1
003	TF	OH703	—	329 (321.1)	-8.3	6.6	—	-10000	—	—	RNAV1
004	TF	STAGE	—	268 (259.6)	-8.3	31.5	—	—	—	—	RNAV1

RWY25

Serial Number	Path Descriptor	Waypoint Identifier	Fly Over	Course °M(°T)	Magnetic Variation	Distance (NM)	Turn Direction	Altitude (FT)	Speed (KIAS)	Vertical Angle	Navigation Specification
001	VA	—	—	252 (243.9)	-8.3	—	—	+500	—	—	RNAV1
002	DF	OH501	—	—	-8.3	—	L	—	—	—	RNAV1
003	TF	OH701	—	019 (011.2)	-8.3	8.2	—	—	—	—	RNAV1
004	TF	OH703	—	329 (321.1)	-8.3	6.6	—	-10000	—	—	RNAV1
005	TF	STAGE	—	268 (259.6)	-8.3	31.5	—	—	—	—	RNAV1

CHANGE : VAR. PROC renamed, PROC course.