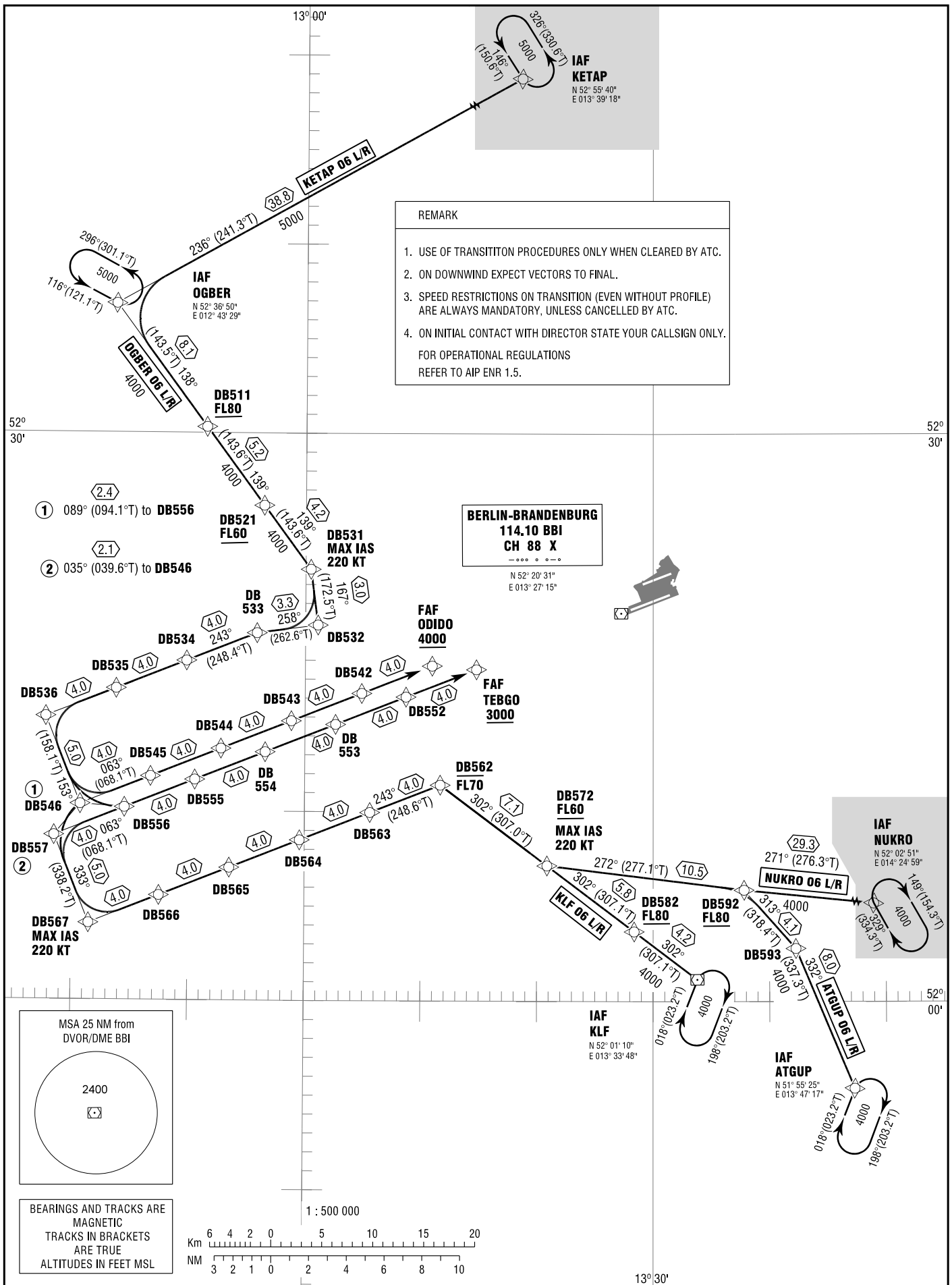


GPS / FMS RNAV ARRIVAL CHART
TRANSITION TO FINAL APPROACH
(OVERLAY TO RADAR VECTOR PATTERN)

ATIS	123.780
BREMEN RADAR	119.630 (KETAP, OGBER)
TOWER	126.425 (ATGUP, KLF, NUKRO) 120.030 (N) , 118.805 (S)

TRANSITION
ALTITUDE 5000
VAR 5° E

BERLIN BRANDENBURG
RWY 06 L/R



REMARK

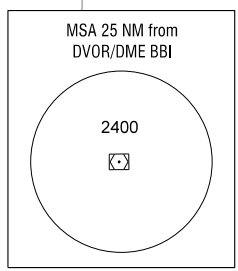
1. USE OF TRANSITION PROCEDURES ONLY WHEN CLEARED BY ATC.
2. ON DOWNWIND EXPECT VECTORS TO FINAL.
3. SPEED RESTRICTIONS ON TRANSITION (EVEN WITHOUT PROFILE) ARE ALWAYS MANDATORY, UNLESS CANCELLED BY ATC.
4. ON INITIAL CONTACT WITH DIRECTOR STATE YOUR CALLSIGN ONLY.

FOR OPERATIONAL REGULATIONS REFER TO AIP ENR 1.5.

BERLIN-BRANDENBURG
114.10 BBI
CH 88 X
----X--X--
N 52° 20' 31"
E 013° 27' 15"

- ① 089° (094.1°T) to DB556
- ② 035° (039.6°T) to DB546

Correction: Runway designator and variation.



BEARINGS AND TRACKS ARE MAGNETIC
TRACKS IN BRACKETS ARE TRUE
ALTITUDES IN FEET MSL

