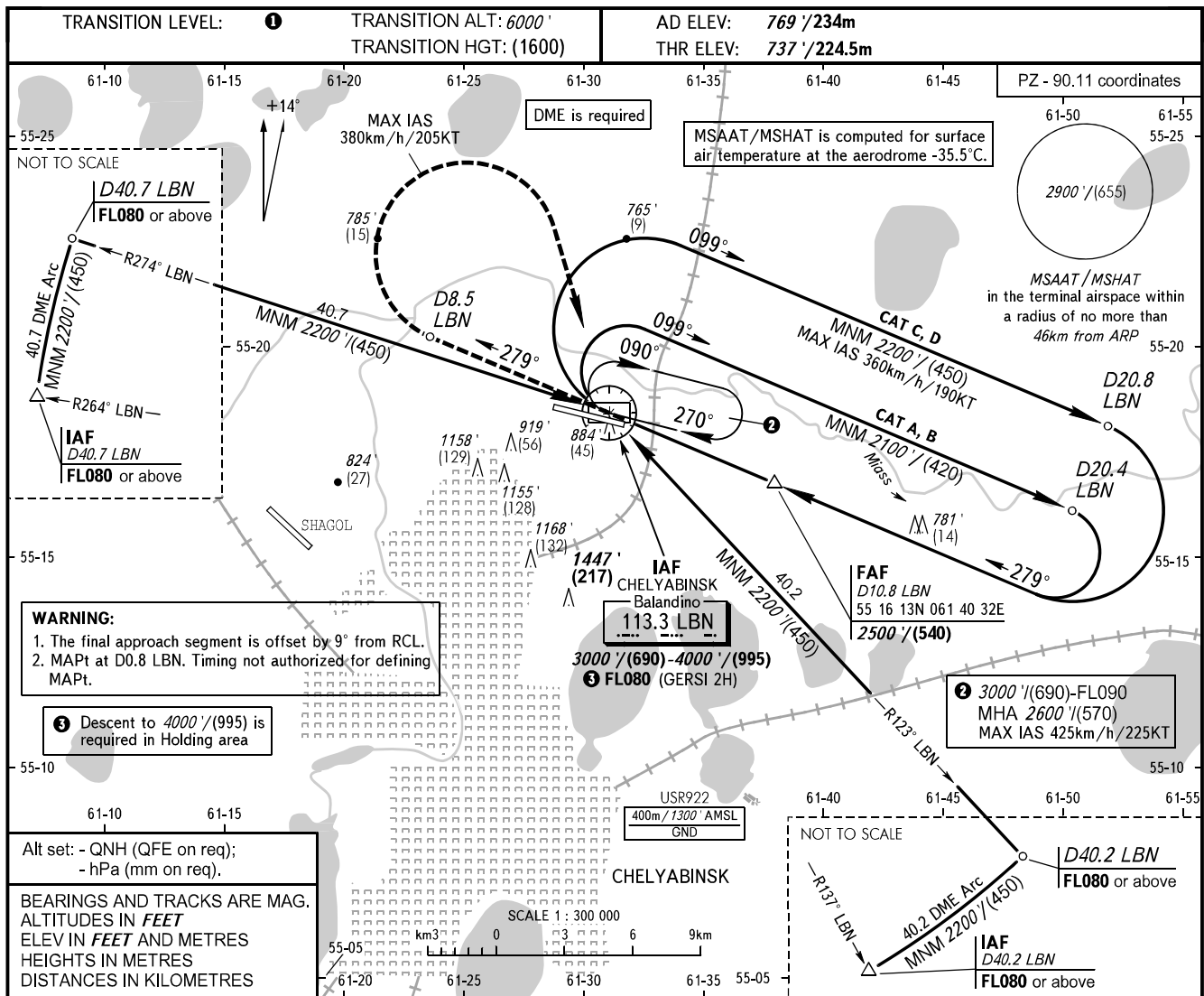


**INSTRUMENT
APPROACH
CHART - ICAO**

RADAR 133.200
START 125.200

**CHELYABINSK, RUSSIA
BALANDINO
VOR RWY 27**



WARNING:
1. The final approach segment is offset by 9° from RCL.
2. MAPt at D0.8 LBN. Timing not authorized for defining MAPt.

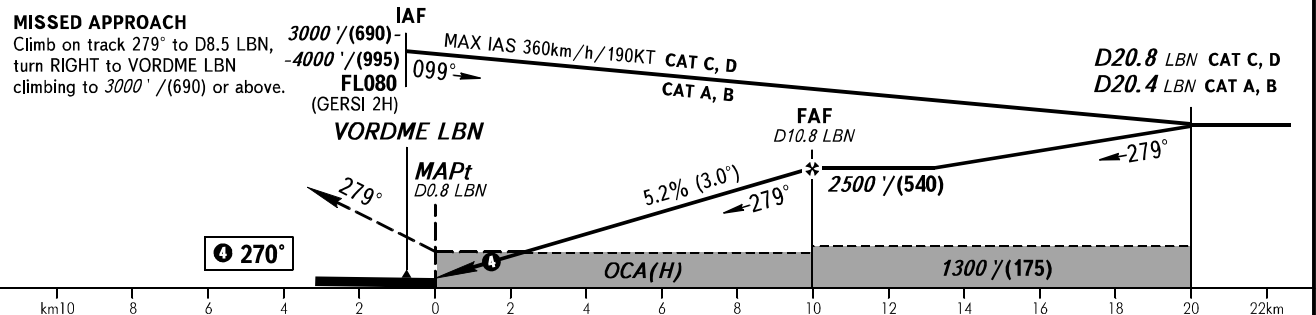
③ Descent to 4000'/(995) is required in Holding area

② 3000'/(690)-FL090
MHA 2600'/(570)
MAX IAS 425km/h/225KT

Alt set: - QNH (QFE on req);
- hPa (mm on req).

BEARINGS AND TRACKS ARE MAG.
ALTITUDES IN FEET
ELEV IN FEET and METRES
HEIGHTS IN METRES
DISTANCES IN KILOMETRES

DME LBN	3.0	5.0	7.0	9.0
ALTITUDE/HEIGHT	1165'/(131)	1506'/(235)	1848'/(339)	2189'/(443)



OCA(H)		A	B	C	D	① TRANSITION LEVEL: - FL070 when QNH is 1013 hPa (760mm mercury column) or above; - FL080 when QNH is 977 hPa (733mm mercury column) or above, but less than 1013 hPa (760mm mercury column); - FL090 when QNH is less than 977 hPa (733mm mercury column).				
Straight-in	Approach	1170' (430') (135)	1170' (430') (135)	1170' (430') (135)	1170' (430') (135)					
Circling		1220' (450') (140)	1460' (690') (210)	1640' (870') (265)	1900' (1140') (345)					
GROUND SPEED	km/h		150	180	210	240	270	300	330	360
	kt		81	97	113	130	146	162	178	194
RATE OF DESCENT	m/s		2.2	2.6	3.0	3.5	3.9	4.3	4.8	5.2
	ft/min		427	512	597	682	768	853	938	1024