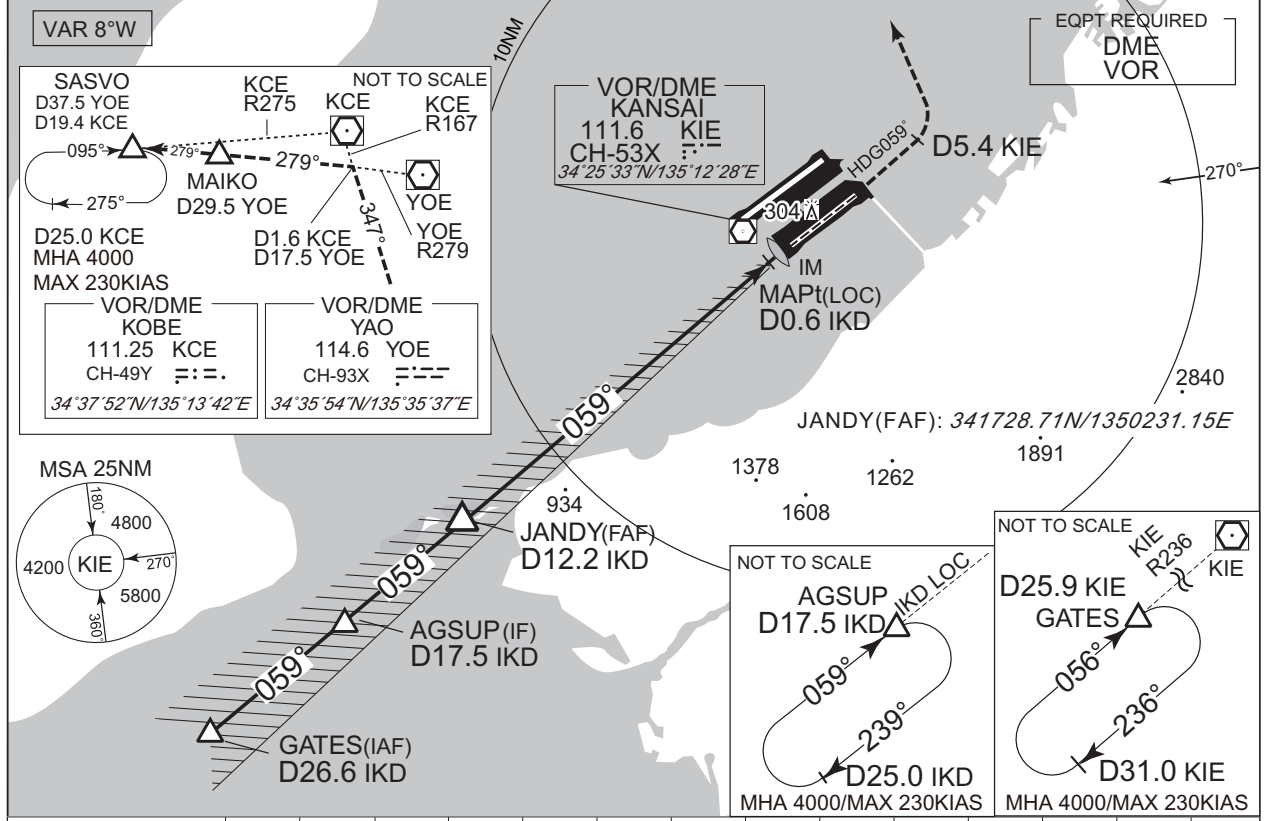


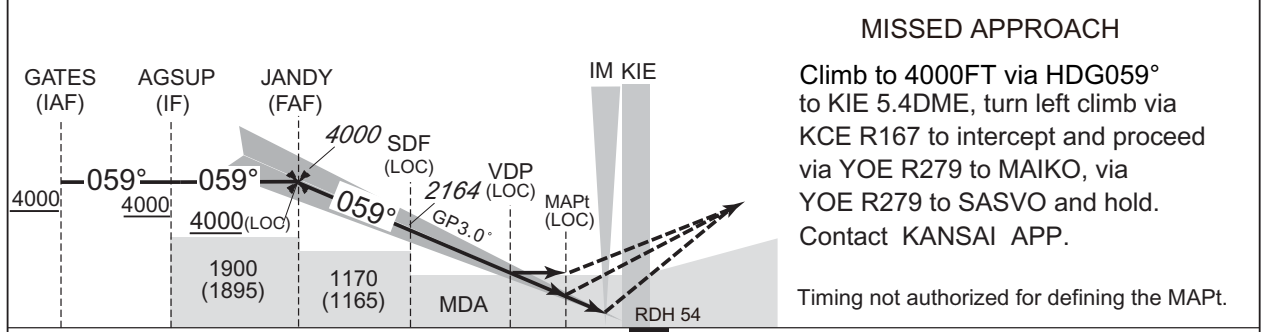
INSTRUMENT APPROACH CHART

RJBB / KANSAI INTL ILS X or LOC X RWY06R (CAT II)

KANSAI APP 120.25 - 125.5 258.3	ILS - LOC 108.1 IKD ≡:- ILS-GP 334.7 ILS-DME CH-18X	KANSAI TOWER 118.2 - 118.05 126.2 - 236.8	RADAR AVBL ATIS 127.85
---------------------------------------	--	---	---------------------------



NM to IKD	FAF	12	11	10	9	8	7	6	5	4	3	2	MAPt
ALT(3.0° APCH Path)	4000	3820	3502	3183	2865	2546	2228	1909	1591	1273	954	635	-



26.6	17.5	12.2	6.8	1.3	0.6	0.3	0.2	DME to IKD					
26.4	17.4	12.0	6.6	1.1	0.5	0.1	0	NM to THR					

Missed APCH climb gradient MNM 5.0%

MINIMA THR elev. 5 AD elev. 17

CAT	CAT II			CAT I		LOC		CIRCLING	
	DA(H)	RA	RVR	DA(H)	RVR/CMV	MDA(H)	RVR/CMV	MDA(H)	VIS
A	105 (100)	100	300	205 (200)	550	390 (385)	900	610 (593)	1600
B							1000		
C							1400		
D/DL									3200

MINIMA with Missed APCH climb gradient of 2.5% are not established.  
Circling to NORTH side of RWY only.

CHANGE : New PROC.