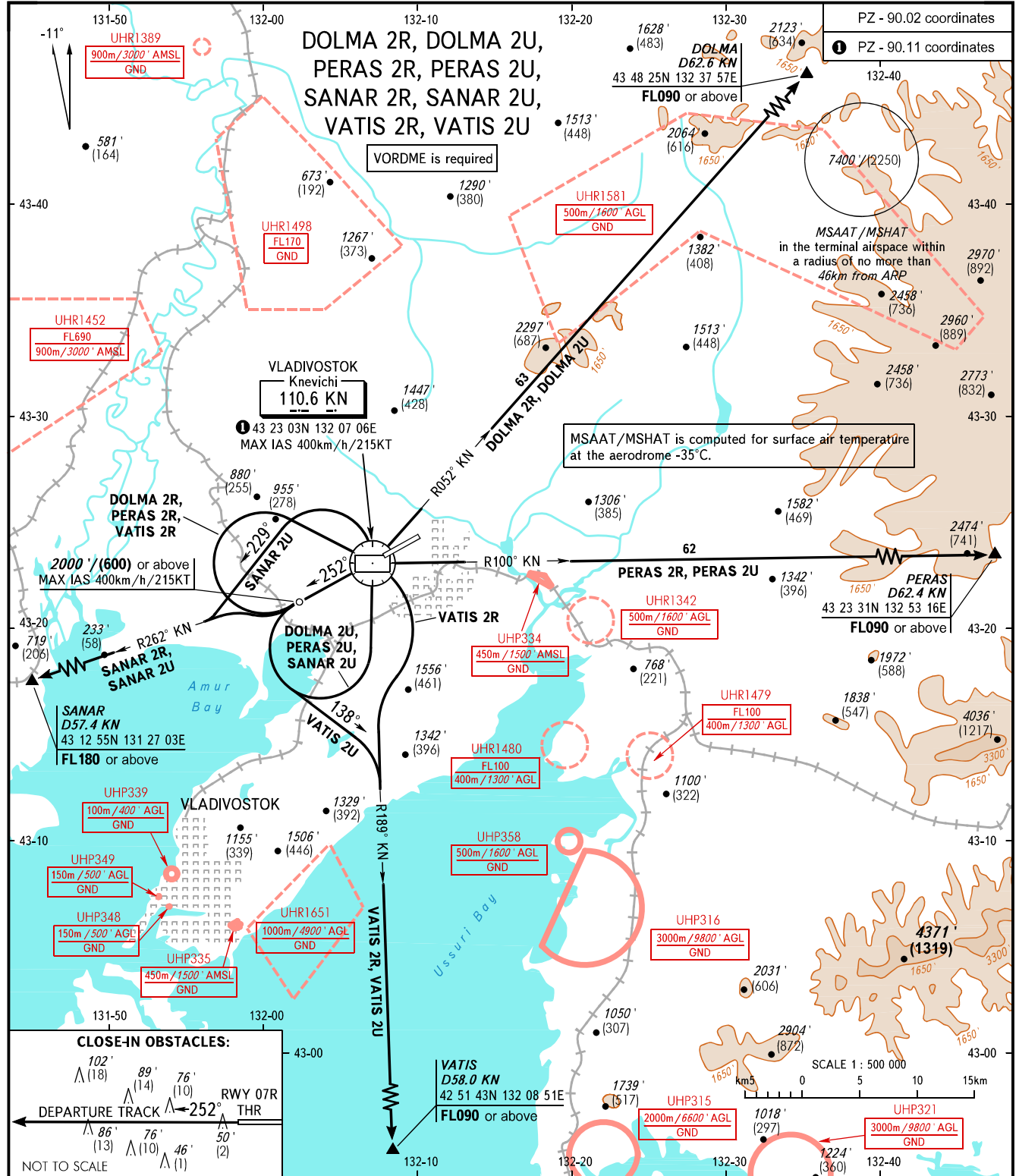


STANDARD DEPARTURE CHART
INSTRUMENT (SID) - ICAO

VLADIVOSTOK, RUSSIA
KNEVICH
RWY 25L

TRANSITION ALT: **8000'**
TRANSITION HGT: **(2430)**



VLADIVOSTOK START 119.500	MINIMUM CLIMB GRADIENTS (due to airspace structure):
VLADIVOSTOK RADAR 123.400	DOLMA 2R, DOLMA 2U, PERAS 2R, PERAS 2U: 5.5% up to 3300'/(995);
	SANAR 2R: 11.5% up to FL180 (5.5% up to 6000'/(1820) by arrangement with ATS unit);
	SANAR 2U: 6.2% up to FL180;
	VATIS 2R: 5.5% up to 3300'/(995), then 4.1% up to 6200'/(1880), when UHR1651 is active;
	VATIS 2U: 5.8% up to 6000'/(1820) (8.8% up to 6300'/(1910), when UHR1651 is active).

BEARINGS AND TRACKS ARE MAGNETIC ALTITUDES IN FEET HEIGHTS IN METRES ELEVATIONS IN FEET AND METRES DISTANCES IN KILOMETRES	Alt set: -QNH(QFE on req); -hPa(mm on req).	WARNING: 1. Turn before passing DER is PROHIBITED. 2. Close-in obstacles are AVBL.
----------------------------------------------------------------------------------------------------------------------------------------	------------------------------------------------	-------------------------------------------------------------------------------------------------

CHANGE: New chart