

FORT DRUM, NEW YORK

24305

# RNAV (GPS) RWY 33

APCH CRS 327°  
 Rwy Idg 5002  
 TDZE 690  
 Arprt Elev 690

-(USA)

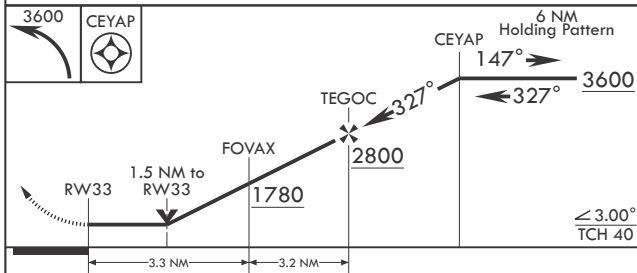
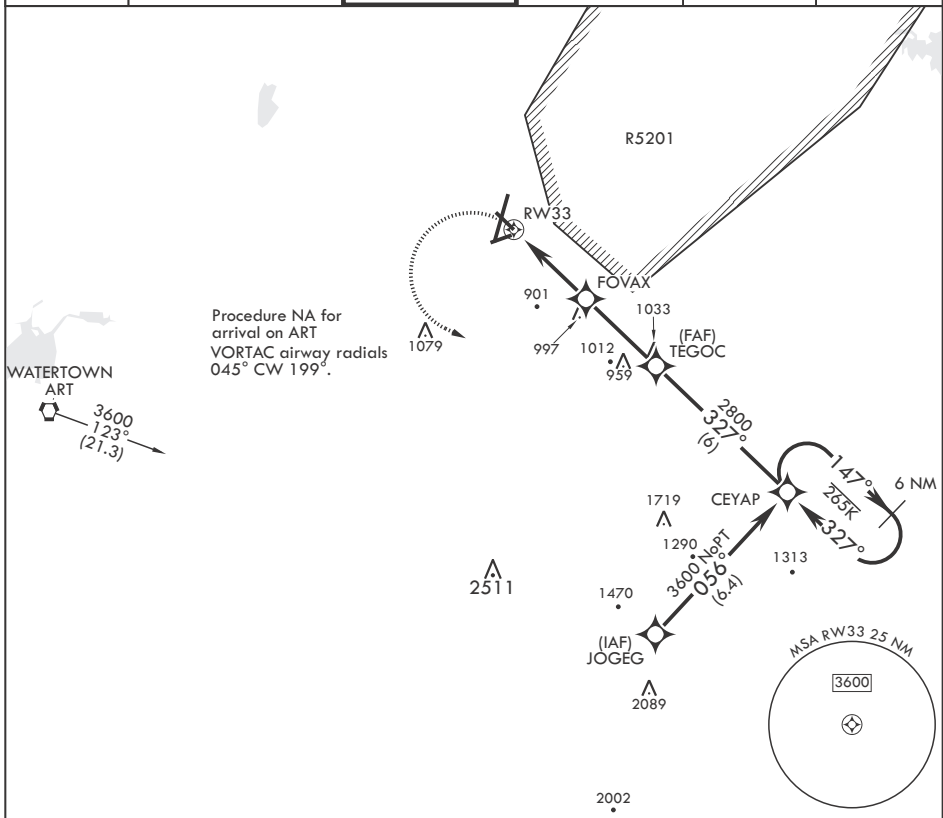
WHEELER SACK AAF (KGTB)

RNP APCH - GPS

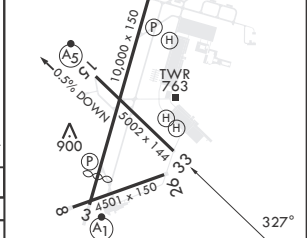
MISSED APPROACH: Climbing left turn to 3600 direct CEYAP and hold.

\* LNAV visibility reduction by helicopters NA.  
 \*\* Circling NA for CAT BCD to Rwy 8. Circling NA E of Rwy 21 and 33.

ATIS 119.525	APP CON/DEP CON 124.875 307.125	TOWER 118.75 290.25	GND CON 123.65 229.8	CLNC DEL 121.9	ASR/PAR
-----------------	------------------------------------	------------------------	-------------------------	-------------------	---------



ELEV 690  
 Rwy 3 Idg 8637'  
 TDZE 690



CATEGORY	A	B	C	D
LNAV MDA*	1200-1 510 (600-1)	1240-1 550 (600-1)	1280-1½ 590 (600-1½)	1460-2½ 770 (800-2½)
CIRCLING**	1200-1 510 (600-1)	1240-1 550 (600-1)	1280-1½ 590 (600-1½)	1460-2½ 770 (800-2½)

HIRL Rwwys 3-21, 15-33  
 MIRL Rwy 8-26  
 RAIL Rwy 15

FORT DRUM, NEW YORK  
 Amdt 2 10AUG23

44°03'N - 75°43'W

WHEELER SACK AAF (KGTB)

# RNAV (GPS) RWY 33

NE-2, 20 MAR 2025 to 17 APR 2025

NE-2, 20 MAR 2025 to 17 APR 2025