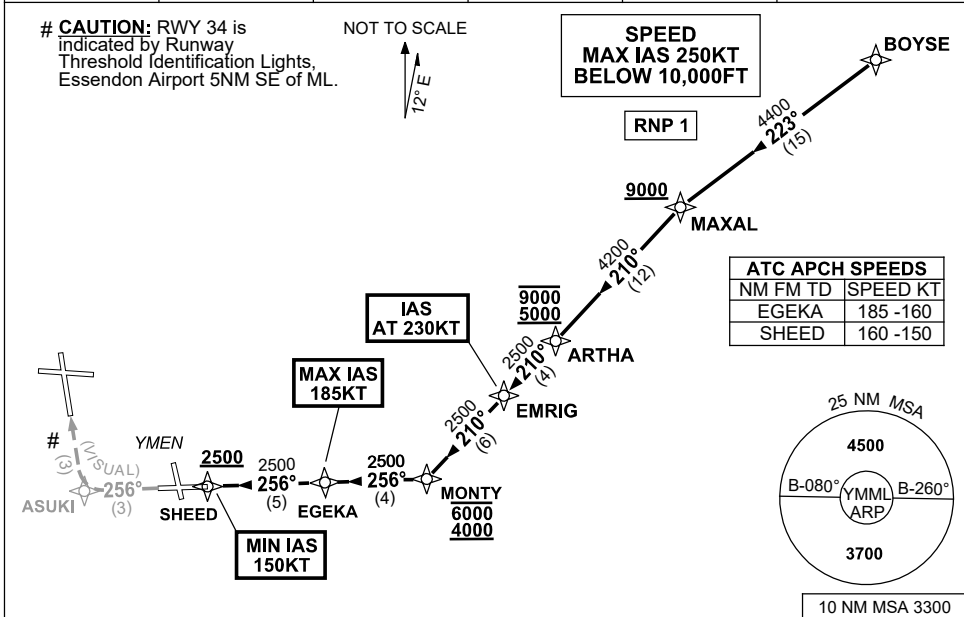


**STANDARD INSTRUMENT ARRIVAL (STAR)  
BOYSE EIGHT VICTOR ARRIVAL (NON-JET) (RNAV)  
MELBOURNE, VIC (YMML)**

**21 MAR 2024**

ATIS 114.1 118.0	APP 132.0	TWR 120.5	SMC 121.7		Bearings are Magnetic Elevations in FEET AMSL
---------------------	--------------	--------------	--------------	--	--



**ARRIVAL: BOYSE EIGHT VICTOR (NON-JET)**

**RWY 34 :**

- From BOYSE track 223° to MAXAL  
**Cross** MAXAL AT or ABV 9000ft
- Turn LEFT, track 210° to ARTHA  
**Cross** ARTHA BTN 5000ft and 9000ft
- Track 210° to EMRIG  
**IAS AT 230KT** from EMRIG
- Track 210° to MONTY  
**Cross** MONTY BTN 4000ft and 6000ft
- Turn RIGHT, track 256° to EGEKA  
MAX IAS 185KT from EGEKA
- Track 256° to SHEED  
**Cross** SHEED AT or ABV 2500ft  
MIN IAS 150KT from SHEED
- Track 256° VISUAL to ASUKI
- Turn RIGHT for VISUAL intercept of final RWY 34

**COMMUNICATIONS FAILURE: PROCEDURE IN IMC**

- Squawk 7600, comply with vertical navigation requirements, but not below MSA.
- Track via the latest STAR clearance to the nominated runway, then fly the most suitable approach in accordance with ERSA EMERG Section 1.5.

Changes: VAR.

MMLSR09-178