

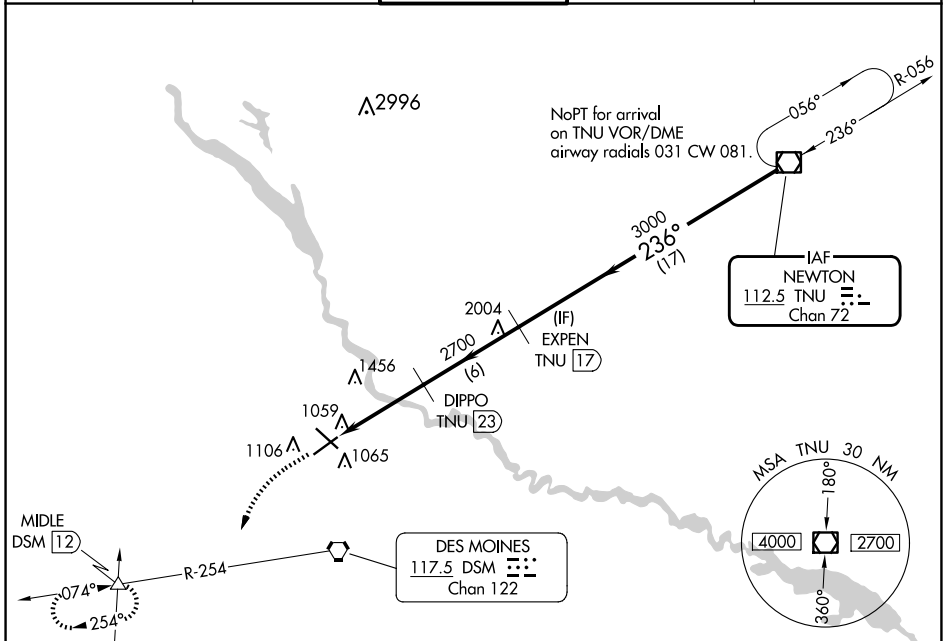
VOR/DME TNU 112.5 Chan 72	APP CRS 236°	Rwy Idg TDZE Apt Elev	9004 939 958
---	------------------------	-----------------------------	---

VOR RWY 23

DES MOINES INTL (DSM)

DME required.	MISSED APPROACH: Climb to 2000 then climbing left turn to 3000 on heading 200° and on DSM VORTAC R-254 direct MIDLE INT/DSM 12 DME and hold.
Rwy 23 helicopter visibility reduction below 3/4 SM NA.	

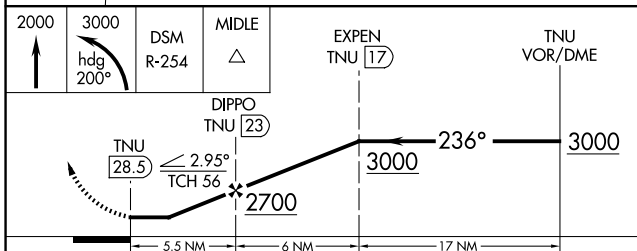
ATIS 119.55	DES MOINES APP CON 123.9 307.15	DES MOINES TOWER 118.3 257.8	GND CON 121.9 348.6	CLNC DEL 134.15 317.55
-----------------------	---	--	-------------------------------	----------------------------------



NC-3, 20 MAR 2025 to 17 APR 2025

NC-3, 20 MAR 2025 to 17 APR 2025

ELEV 958	D TDZE 939
----------	-------------------



REIL Rws 5 and 23	TWR 1048
TDZ/CL Rwy 31	236°
HIRL Rws 13-31 and 5-23	9004 Y 150

CATEGORY	A	B	C	D
S-23	1720-1 781 (800-1)	1720-1 1/4 781 (800-1 1/4)	1720-2 1/2	781 (800-2 1/2)
CIRCLING	1720-1 762 (800-1)	1720-1 1/4 762 (800-1 1/4)	1720-2 1/2 762 (800-2 1/2)	1760-2 1/2 802 (900-2 1/2)