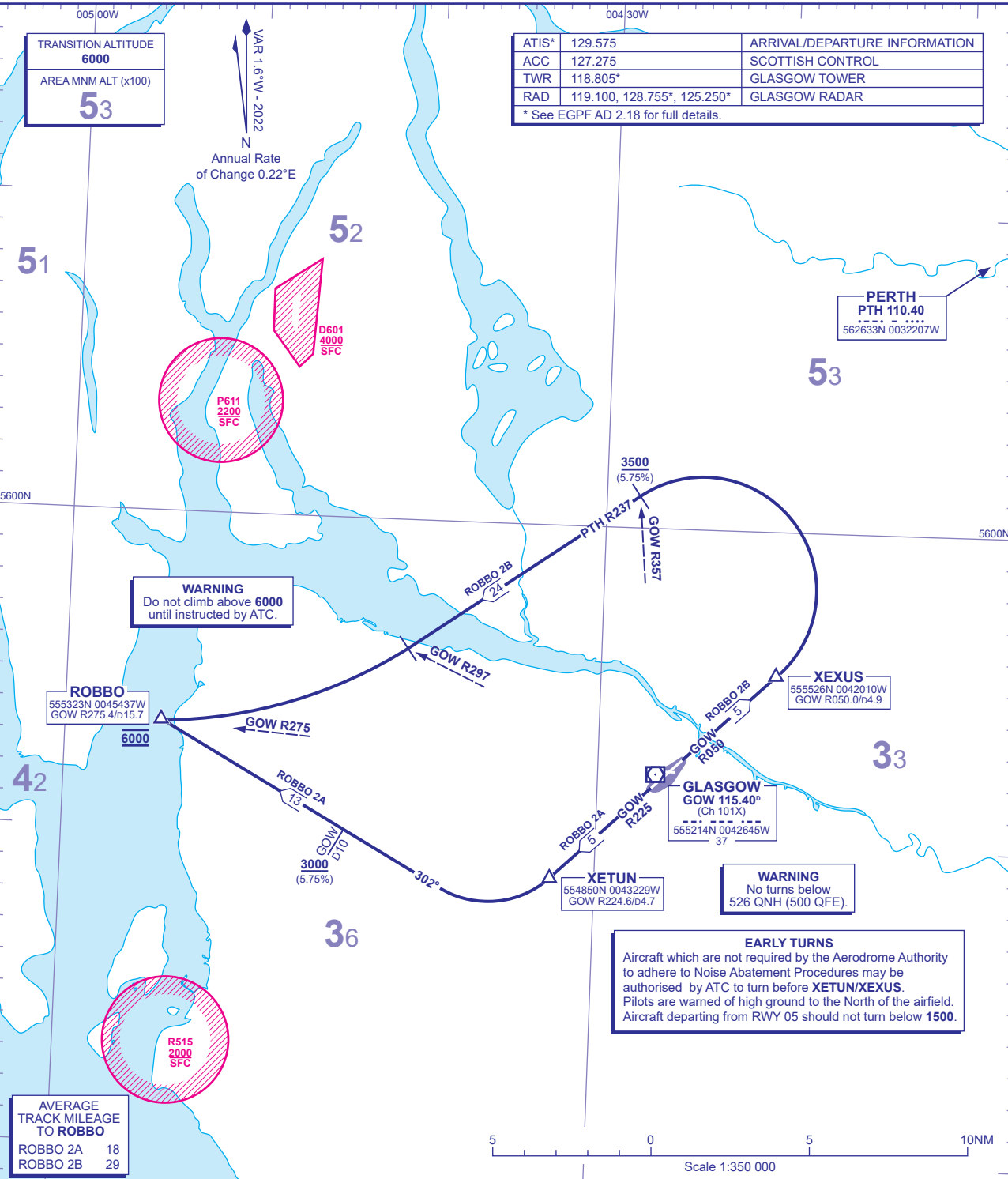


STANDARD DEPARTURE CHART -  
INSTRUMENT (SID) - ICAO

DISTANCES IN NAUTICAL MILES  
BEARINGS, TRACKS AND RADIALS ARE MAGNETIC  
ALTITUDES AND ELEVATIONS ARE IN FEET

GLASGOW  
ROBBO



|   |   |      |
|---|---|------|
| ROBBO 2A<br>RWY 23  | Climb straight ahead to intercept <b>GOW VOR R225</b> . At <b>GOW D4.7 (XETUN)</b> turn right onto track 302° crossing <b>GOW D10</b> at <b>3000</b> or above (5.75%), to <b>ROBBO</b> at <b>6000</b> .   | FIR. |
| <b>OBSTACLE CLEARANCE</b> - RWY 23: Maintain minimum 3.8% climb to <b>2100</b> .  |   |      |
| ROBBO 2B<br>RWY 05  | Climb straight ahead to intercept <b>GOW VOR R050</b> . At <b>GOW D4.9 (XEXUS)</b> turn left onto <b>PTH VOR R237</b> , crossing <b>GOW VOR R357</b> at <b>3500</b> or above (5.75%). At <b>GOW VOR R297</b> turn right onto <b>GOW VOR R275</b> to <b>ROBBO</b> at <b>6000</b> . | FIR. |
| <b>OBSTACLE CLEARANCE</b> - RWY 05: Maintain minimum 4.5% climb to <b>1500</b> .  |   |      |
| <b>GENERAL INFORMATION</b><br>1 SIDs reflect Noise Abatement Procedures. See EGPF AD 2.21 for Noise Abatement Procedures.<br>2 Climb gradients greater than 3.3% are required for obstacle clearance purposes, as indicated. In addition climb gradients greater than those necessary for obstacle clearance are required for ATC and airspace requirements as indicated.<br>3 En-route cruising levels will be issued after take-off by 'Scottish Control'. Report callsign, SID designator, current altitude and cleared altitude on first contact with 'Scottish Control'.<br>4 Maximum 250KIAS below FL100 unless otherwise authorised.<br>5 Expect first CPDLC Data Link Authority to be EGPF. |   |      |
| <b>CHANGE (13/23): PTH VOR RECALIBRATION. PTH VOR RADIAL.</b>   |   |      |