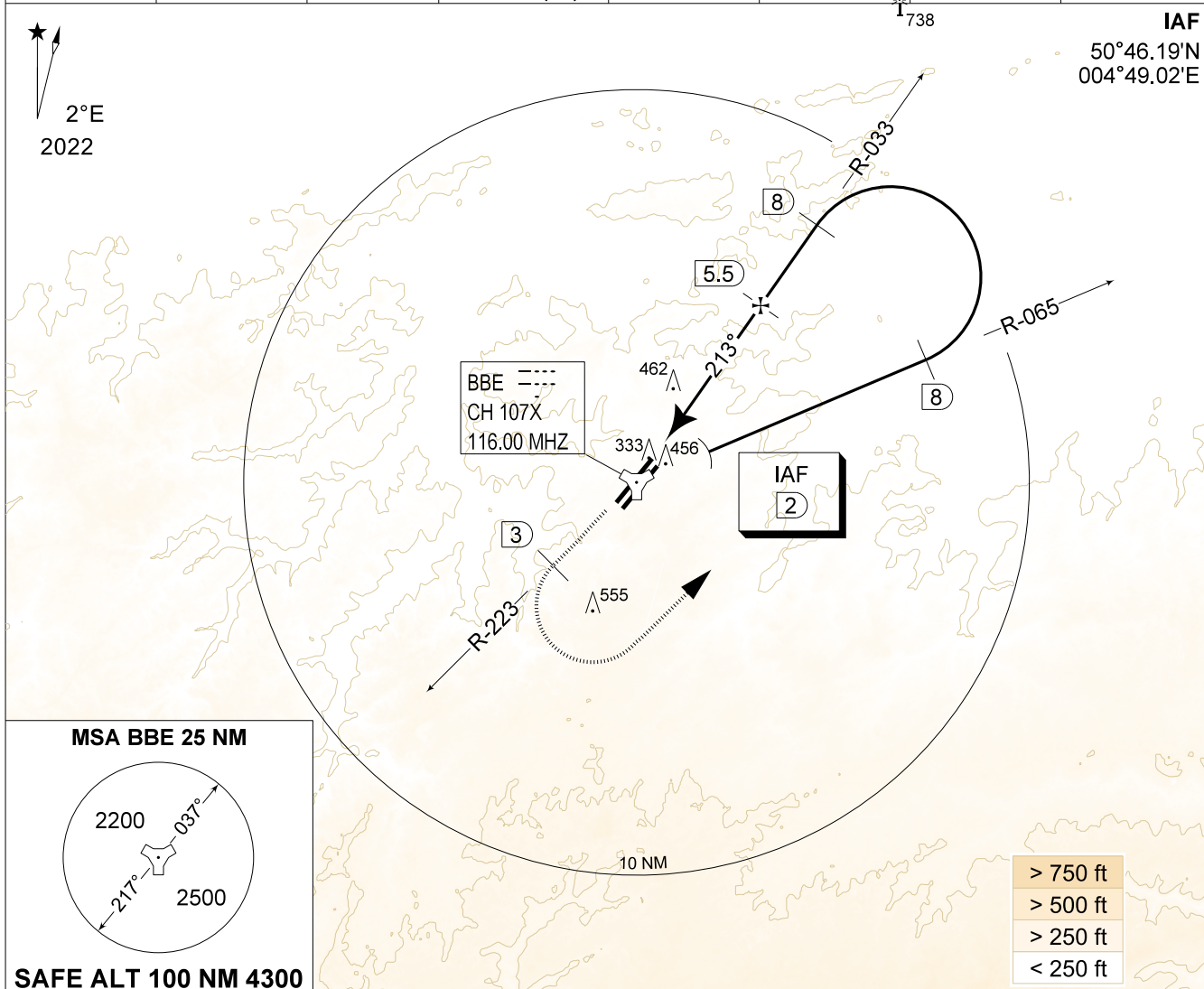


MIPS
INSTRUMENT APPROACH CHART

AD ELEV 362

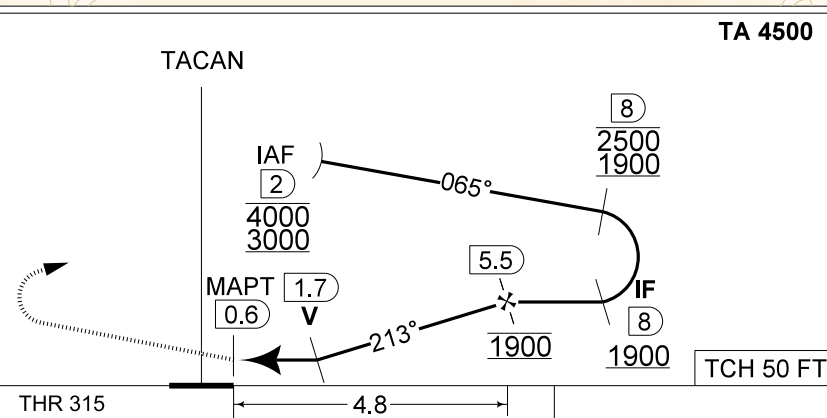
TACAN z RWY 22R
BEAUVECHAIN (EBBE)

BELGA RADAR 374.400 129.325		BEAUVECHAIN APP 282.100 122.830		BEAUVECHAIN TWR 362.025 130.730		BEAUVECHAIN GND 359.825 121.855	
TACAN BBE CH107X	APP COURSE 213°	FAF ALT 1900 FT	DESCENT GR 5.24%(3°)	MDA 710	THR 315 FT	ALS 930 M	LDA 7988 FT



DME BBE	5	4	3	2
Altitude	1760	1440	1120	800
Height	(1444)	(1124)	(804)	(484)

MISSED APPROACH
Climb to 1000 FT runway track and intercept R-223. At 2 DME past TACAN climb to 3000 FT. Passing 3 DME, turn left at MAX 220 KIAS (300 KIAS for HPMA) to intercept 8 DME/R-065 outbound and proceed for a TACAN z / ILS z RWY 22R.



CAT I THR 315 4.8 TCH 50 FT

CATEGORY	C	D	HPMA
S-TAC 22R	710 - 1.1 395 (400 - 1.1 / 2.1)		

TACAN z RWY 22R 50°45.47' N
004°46.02' E **BEAUVECHAIN (EBBE)**

CHANGE: Removal of PAR

BEL DEFENCE, AIR COMPONENT 08-AUG-2024 - THS