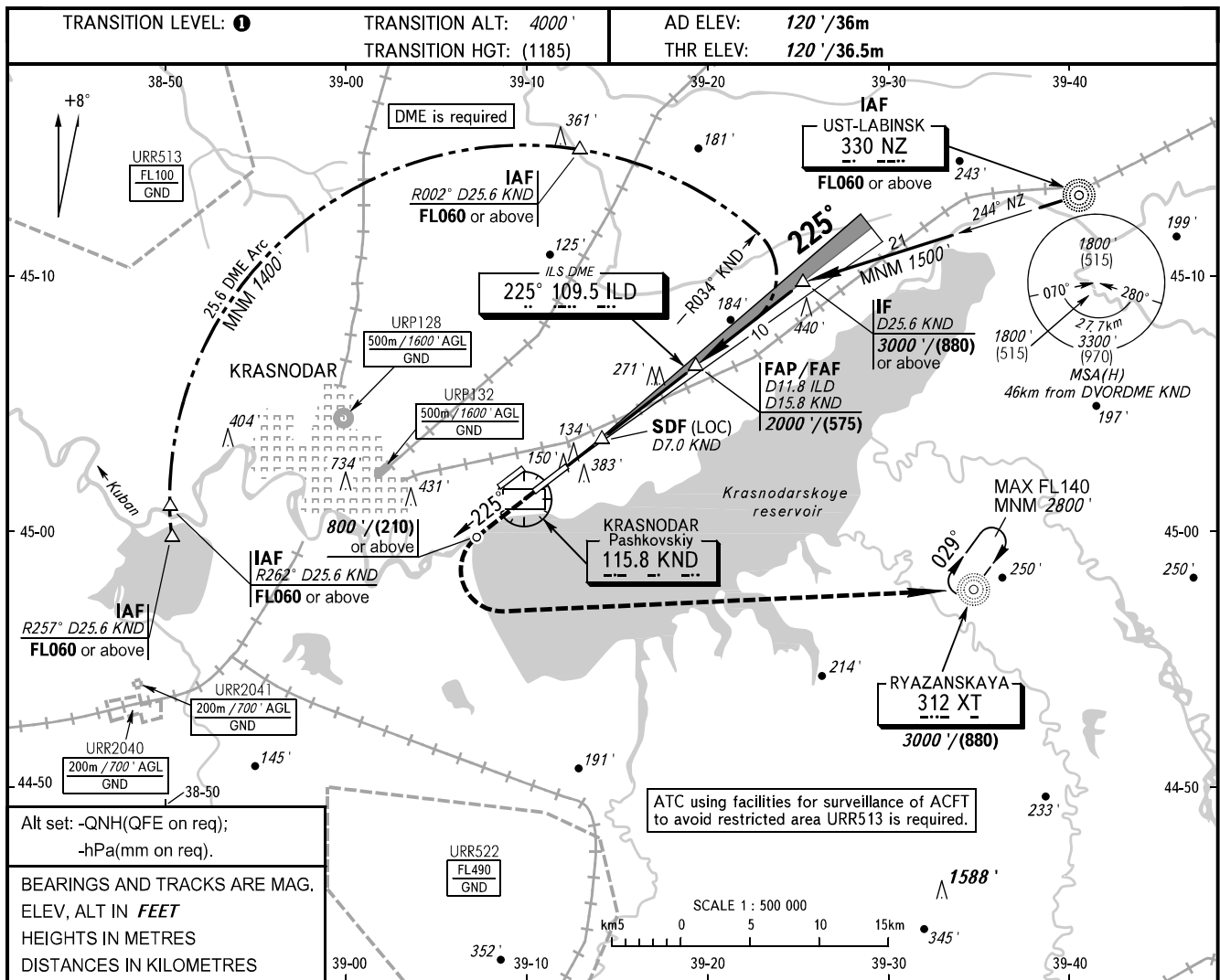


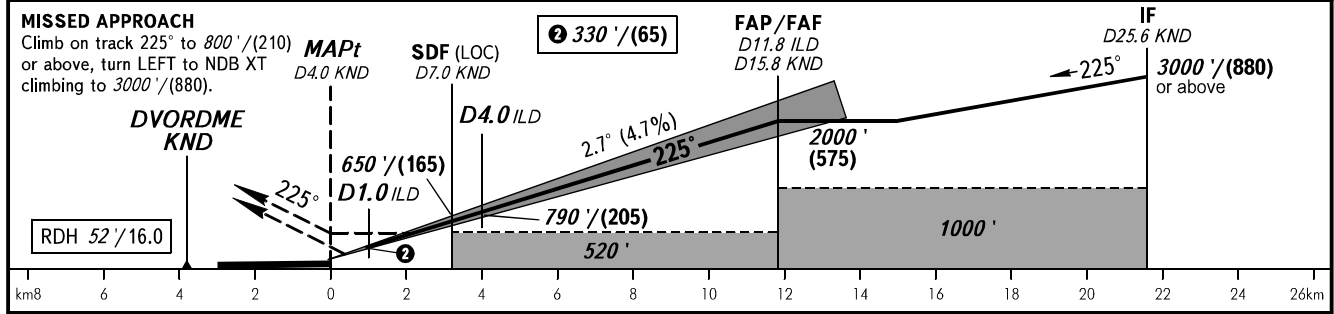
**INSTRUMENT
APPROACH
CHART - ICAO**

**KRASNODAR, RUSSIA
PASHKOVSKIY
ILS Y CAT I/II, LOC Y RWY 23L**

RADAR 121.300
TOWER 118.200



| | | | | | |
|----------|------|-------|-------|-------|-------|
| DME KND | 8.0 | 10.0 | 12.0 | 14.0 | 15.8 |
| ALTITUDE | 800' | 1110' | 1420' | 1730' | 2000' |



| OCA(H) | | A | B | C | D |
|-------------|--------------|-------------|-------------|-------------|-------------|
| Straight-in | CAT I | 281' (162') | 291' (171') | 301' (181') | 311' (191') |
| | CAT II | 173' (55') | 183' (65') | 196' (78') | 210' (92') |
| Approach | LOC With SDF | 470' (350') | 470' (350') | 470' (350') | 470' (350') |
| | LOC WO SDF | 520' (400') | 520' (400') | 520' (400') | 520' (400') |
| Circling | | 680' (560') | 680' (560') | 780' (660') | 830' (710') |

1 TRANSITION LEVEL:
- FL060 when QNH is 977 hPa (733mm mercury column) or above;
- FL070 when QNH is 941 hPa (706mm mercury column) or above,
but less than 977 hPa (733mm mercury column).
NOTE:
1. ILS DME ILS DME reads zero at RWY 23L THR.
2. Timing not authorized for defining MAPt.
3. Turn before passing MAPt is PROHIBITED.
4. Wind shear is expected.

| | | | | | | | | | | |
|-----------------|--------|-----|-----|-----|-----|-----|-----|-----|-----|------|
| GROUND SPEED | km/h | 150 | 180 | 210 | 240 | 270 | 300 | 330 | 360 | 390 |
| | m/s | 2.0 | 2.4 | 2.7 | 3.1 | 3.5 | 3.9 | 4.3 | 4.7 | 5.1 |
| RATE OF DESCENT | ft/min | 385 | 463 | 540 | 617 | 694 | 771 | 848 | 925 | 1002 |