

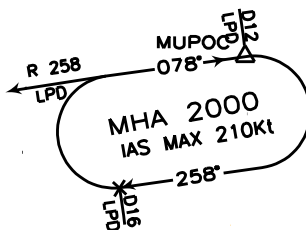
# STARs

## RWY08/26

# LAMPEDUSA

TRANSITION ALT 4000

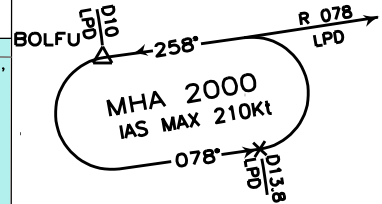
### MUPOC HOLDING PROCEDURE



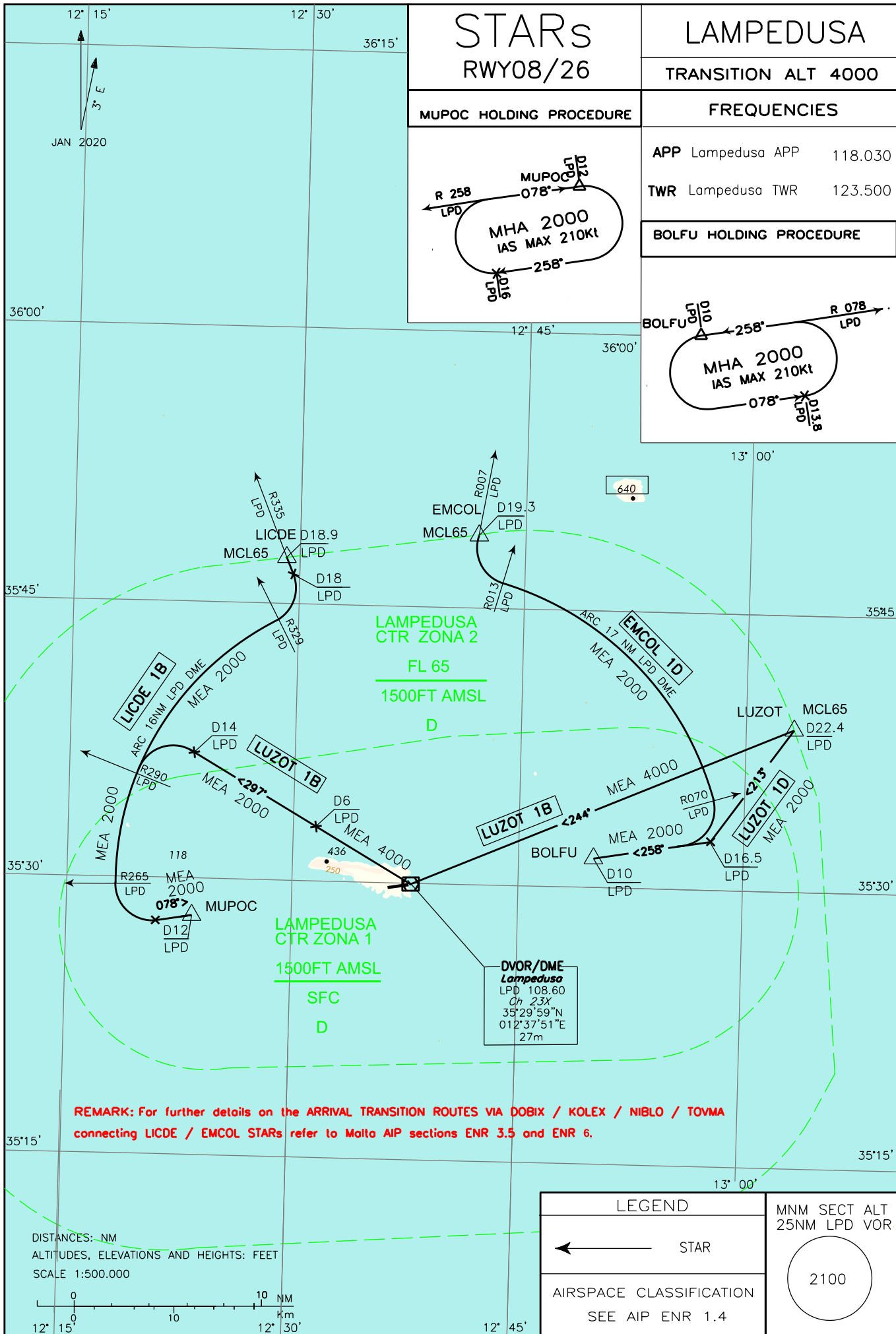
### FREQUENCIES

APP Lampedusa APP 118.030  
 TWR Lampedusa TWR 123.500

### BOLFU HOLDING PROCEDURE

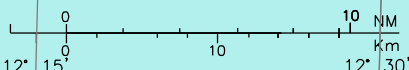


CHANGE: TRANSITION ALTITUDE UPDATED



**REMARK:** For further details on the ARRIVAL TRANSITION ROUTES VIA DOBIX / KOLEX / NIBLO / TOVMA connecting LICDE / EMCOL STARs refer to Malta AIP sections ENR 3.5 and ENR 6.

DISTANCES: NM  
 ALTITUDES, ELEVATIONS AND HEIGHTS: FEET  
 SCALE 1:500.000



LEGEND		MNM SECT ALT 25NM LPD VOR
← STAR		2100
AIRSPACE CLASSIFICATION SEE AIP ENR 1.4		