

APP CRS <b>058°</b>	Rwy Idg TDZE Apt Elev	<b>N/A</b> <b>N/A</b> <b>5904</b>
------------------------	-----------------------------	---

# RNAV (GPS)-A

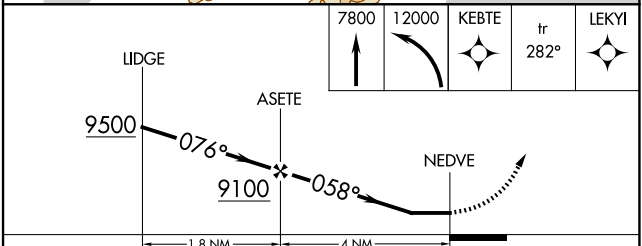
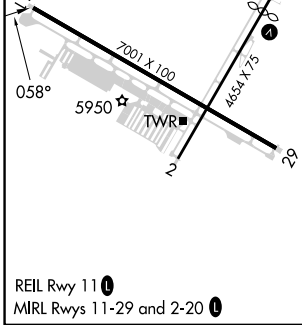
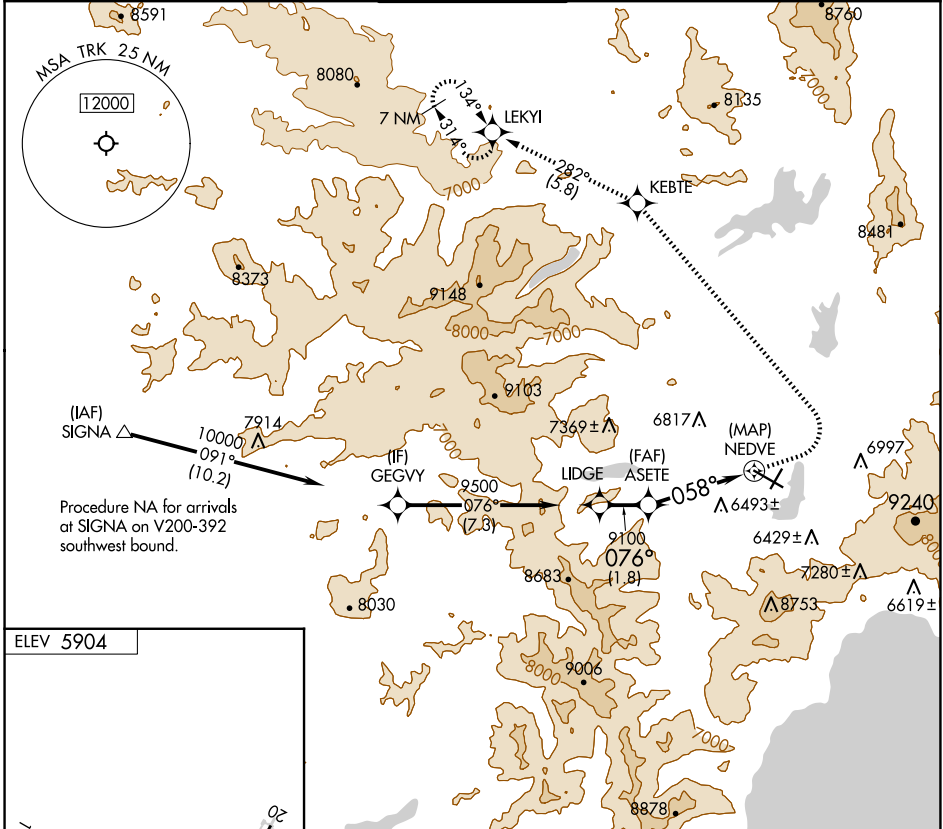
## TRUCKEE-TAHOE (TRK)

RNP APCH.

**⚠** Circling NA for Cat C south of Rwy 29 and east of Rwy 2.  
**⚠** Procedure NA at night. When local altimeter setting not received, procedure NA.  
**❄** -18°C

MISSED APPROACH: (Do not exceed 200K until KEBTE)  
 Climb to 7800 then climbing left turn to 12000 direct KEBTE and track 282° to LEKY1 and hold, continue climb-in-hold 12000.

D-ATIS <b>118.0</b>	OAKLAND CENTER <b>127.95 316.1</b>	TRUCKEE TOWER* <b>120.575 (CTAF) 0</b>	GND CON <b>118.3</b>	UNICOM <b>122.95</b>
------------------------	---------------------------------------	---	-------------------------	-------------------------



CATEGORY	A	B	C	D
<b>C</b> CIRCLING	7500-1¼ 1596 (1600-1¼)	7500-1½ 1596 (1600-1½)	7700-3 1796 (1800-3)	NA

SW-2, 20 MAR 2025 to 17 APR 2025

SW-2, 20 MAR 2025 to 17 APR 2025