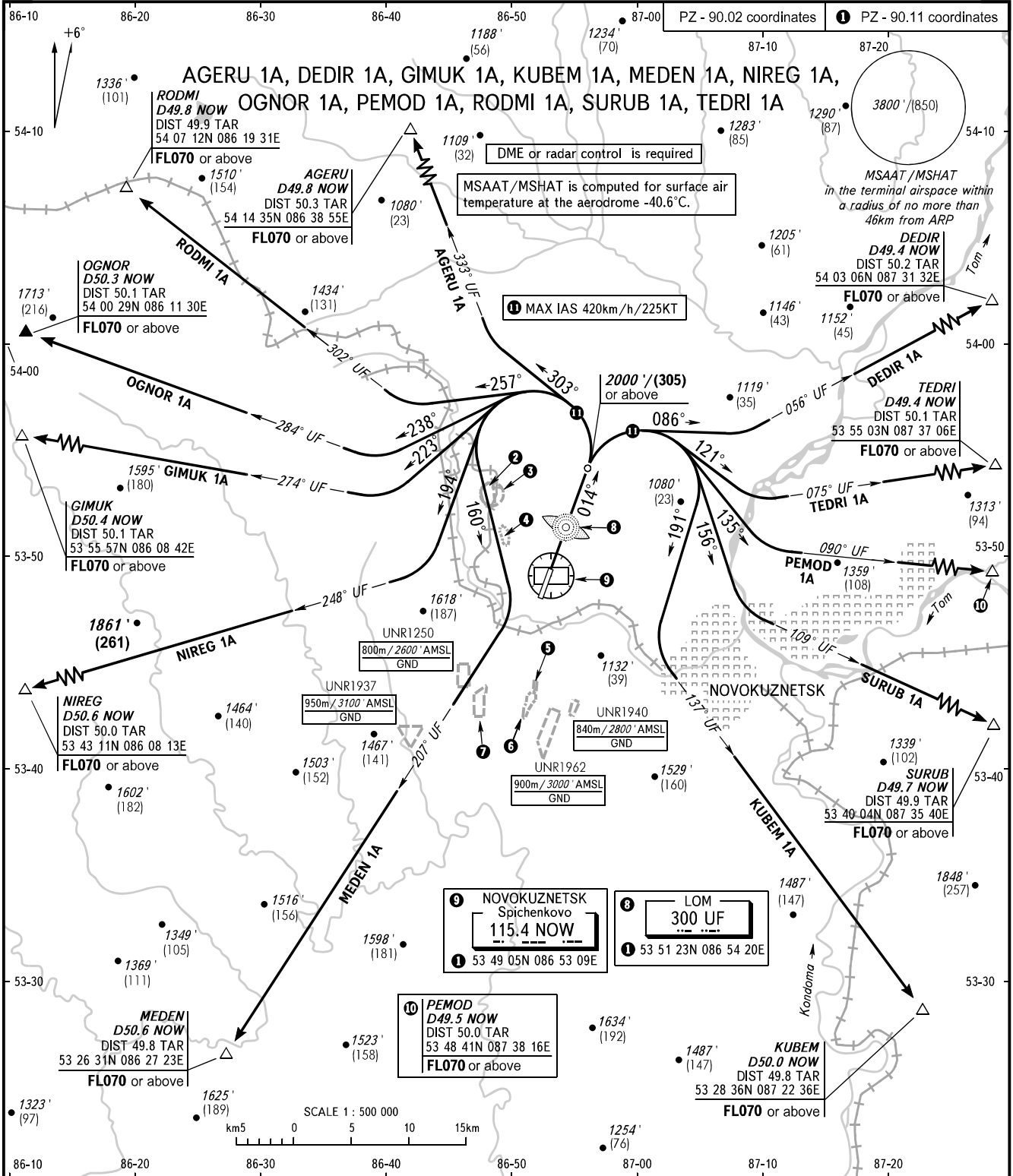


STANDARD DEPARTURE CHART
INSTRUMENT (SID) - ICAO

TRANSITION ALT: **4000'**
TRANSITION HGT: **(915)**

NOVOKUZNETSK, RUSSIA
SPICHENKOVO
RWY 01



START **121.200**
APPROACH **118.600**

② UNR1249 750m/2500' AMSL GND	③ UNR1277 670m/2200' AMSL GND	④ UNR1145 900m/3000' AMSL GND
⑤ UNR1987 900m/3000' AMSL GND	⑥ UNR1939 900m/3000' AMSL GND	⑦ UNR1986 850m/2800' AMSL GND

WARNING:
1. Turn before passing LOM UF is PROHIBITED.
2. MINIMUM CLIMB GRADIENT (due to airspace structure):
AGERU 1A: 3.8% up to FL070;
DEDIR 1A: 3.5% up to FL070.
3. AGERU 1A, GIMUK 1A, MEDEN 1A, NIREG 1A, OGNOR 1A, RODMI 1A require permission to overfly UNR1145, UNR1249 (during their activity) or ATS unit coordination.

BEARINGS AND TRACKS ARE MAGNETIC
ALTITUDES IN FEET, HEIGHTS IN METRES
ELEVATIONS IN FEET AND METRES
DISTANCES IN KILOMETRES

Alt set: -QNH(QFE on req);
-hPa(mm on req).

CHANGE: WARNING