

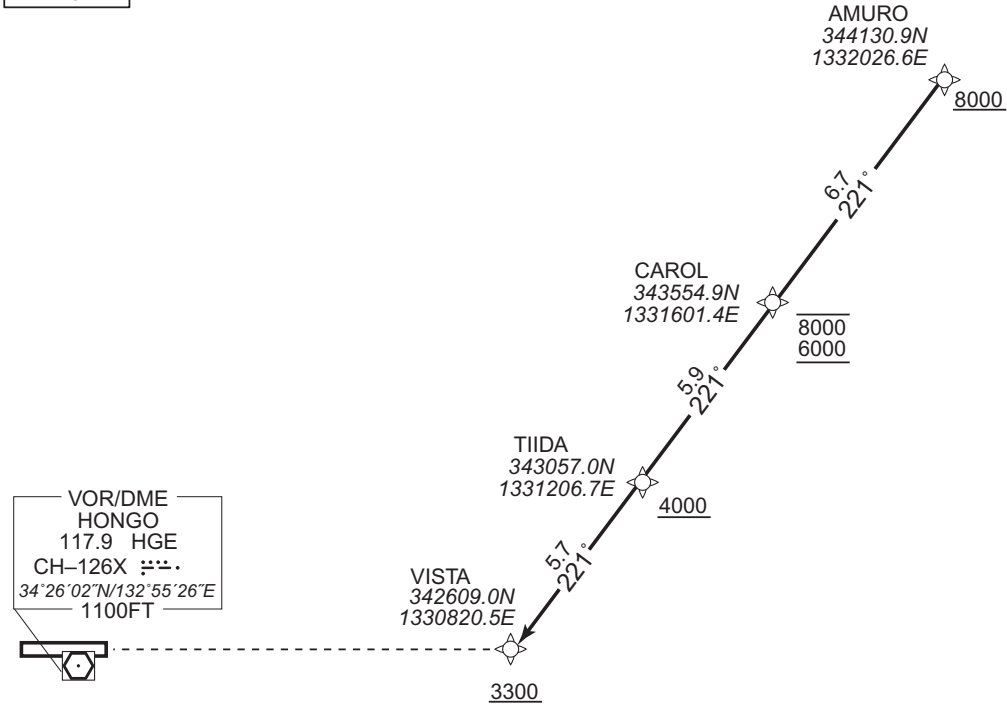
STANDARD ARRIVAL CHART -INSTRUMENT

RJOA / HIROSHIMA RNAV STAR RWY28

VISTA ARRIVAL RNP1

Note GNSS required.

VAR 8°W



From AMURO at or above 8000FT, to CAROL between 8000FT and 6000FT, to TIIDA at or above 4000FT, to VISTA at or above 3300FT.

CHANGE : VAR. Navigation Specification.

Serial Number	Path Descriptor	Waypoint Identifier	Fly Over	Course °M(°T)	Magnetic Variation	Distance (NM)	Turn Direction	Altitude (FT)	Speed (KIAS)	Vertical Angle	Navigation Specification
001	IF	AMURO	-	-	-8.1	-	-	+8000	-	-	RNP1
002	TF	CAROL	-	221 (213.0)	-8.1	6.7	-	-8000 +6000	-	-	RNP1
003	TF	TIIDA	-	221 (213.0)	-8.1	5.9	-	+4000	-	-	RNP1
004	TF	VISTA	-	221 (212.9)	-8.1	5.7	-	+3300	-	-	RNP1