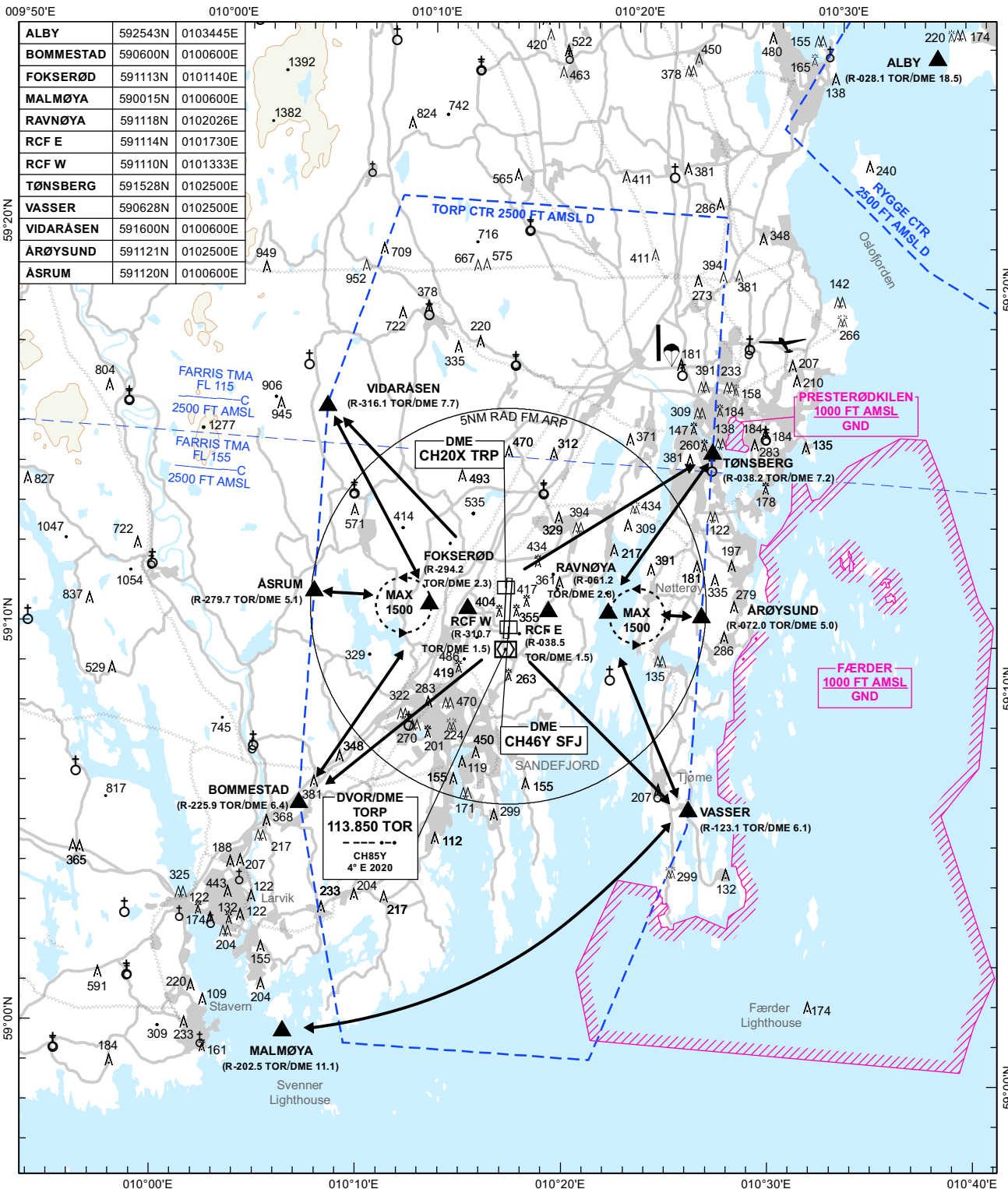


VAC - VISUAL APPROACH CHART PLAN VIEW SCALE:1:275 000

ATIS: 119.080	AERODROME ELEVATION: 286 FT	ELEV, ALT AND HGT IN FT	SANDEFJORD TORP NORWAY
APP: 134.055 124.355	OBSTACLES LESS THAN 100 FT GND ARE NORMALLY NOT SHOWN		
TWR: 118.655	MAGNETIC VARIATION: 4° E (2020)		
GND: 126.180	TRANSITION ALTITUDE: 7000		



CHANGES: FREQUENCIES, EDITORIALS.

VFR RCF PROC

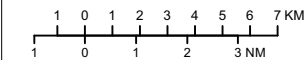
1. SQUAWK 7600
2. FOLLOW THE ROUTES, OR TRACK AND ALTITUDE AS CLEARED AND PROCEED TO HLDG E OR W OF RWY.
3. HLDG "CHECKPOINT EAST" AND "CHECKPOINT WEST" ARE ESTABLISHED RESPECTIVELY 1 NM E AND 1 NM W OF RWY.
4. WATCH TWR FOR VISUAL SIGNALS.

VFR ALTITUDE

ALTITUDE AS CLEARED BY ATC.
 FIXED WING ACFT CAN EXPECT OUTBOUND 2000 FT OR BELOW.
 FIXED WING ACFT CAN EXPECT INBOUND 1500 FT OR BELOW.
 HELICOPTER CAN EXPECT 1000 FT OR BELOW INSIDE 5 NM ARP.
 ACFT BTN MALMØYA AND VASSER CAN EXPECT MAX 1000 FT.

NOTE

JARLSBERG AD CIRCUIT AT 1000 FT.
 JARLSBERG FREQ 122.300 AND BLIND TRANSMISSION.



ATS AIRSPACE CLASSIFICATION:
 REF ENR 1.4
 LEGENDS: REF GEN 2.3

PAPI RWY 18: LEFT 3.0°, MEHT 51FT.
 PAPI RWY 36: LEFT 3.0°, MEHT 53 FT.