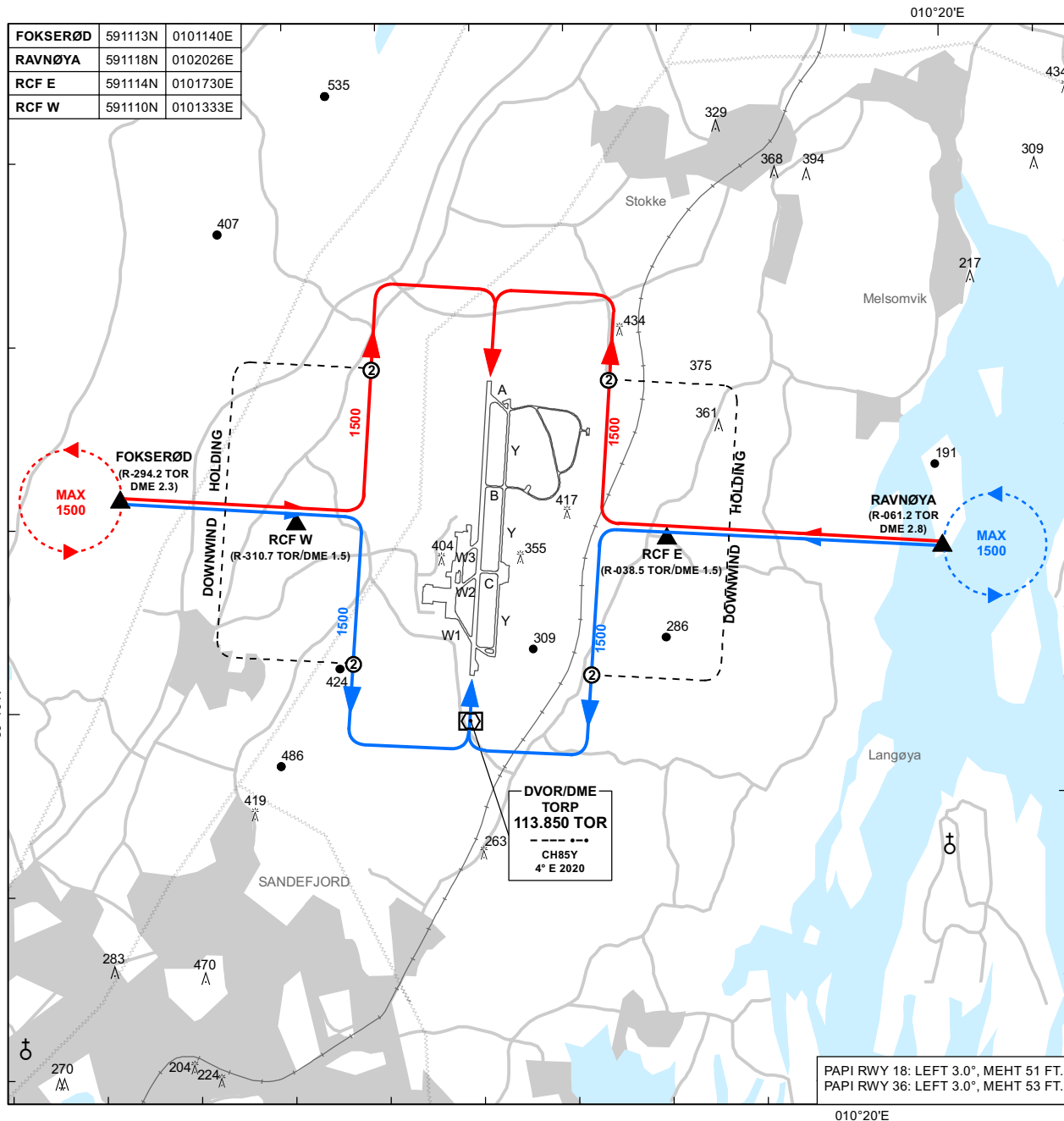
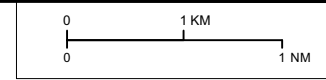


LANDING PATTERN - LIGHT AIRCRAFT PLAN VIEW SCALE:1:65 000

ATIS: 119.080	AERODROME ELEVATION: 286 FT	ELEV, ALT AND HGT IN FT	<b>SANDEFJORD TORP NORWAY</b>
APP: 134.055 124.355	OBSTACLES LESS THAN 100 FT GND ARE NORMALLY NOT SHOWN		
TWR: 118.655	MAGNETIC VARIATION: 4° E (2020)		
GND: 126.180	TRANSITION ALTITUDE: 7000		



PAPI RWY 18: LEFT 3.0°, MEHT 51 FT.  
PAPI RWY 36: LEFT 3.0°, MEHT 53 FT.



FOR Å FORSINKE/HOLDE LETTE FLY SOM ALLEREDE ER ETABLERT I LANDINGSRUNDEN, KAN DE BLI INSTRUERT TIL Å BLI I VENTEMØNSTER PÅ MEDVINDSLEGG SOM VIST OVENFOR.

HVIS MAN ETTER Å HA FLØYET EN (ELLER FLERE) RUNDE(R) I VENTEMØNSTERET ANKOMMER PUNKT 2 VIST OVENFOR UTEN Å HA MOTTATT NY KLARERING, FORTSETTER MAN I VENTEMØNSTER TIL NY INSTRUKS MOTTAS FRA TWR.

ATS AIRSPACE CLASSIFICATION: REF ENR 1.4  
LEGENDS: REF GEN 2.3

IN ORDER TO DELAY/HOLD LIGHT AIRCRAFT ALREADY ESTABLISHED IN THE LANDING PATTERN, AIRCRAFT MAY BE INSTRUCTION TO JOIN HLDG PATTERN ON DOWNWIND AS SHOWN ABOVE.

IF THE AIRCRAFT, AFTER HAVING MADE ONE TURN (OR MORE) IN THE HLDG PATTERN IS APPROACHING POINT 2 SHOWN ABOVE AND NOT HAVING RECEIVED NEW CLEARANCE, CONTINUE IN HLDG PATTERN UNTIL NEW INSTRUCTION IS RECEIVED FROM TWR.

CHANGES: FREQUENCIES.