

RNAV (GPS) RWY 36

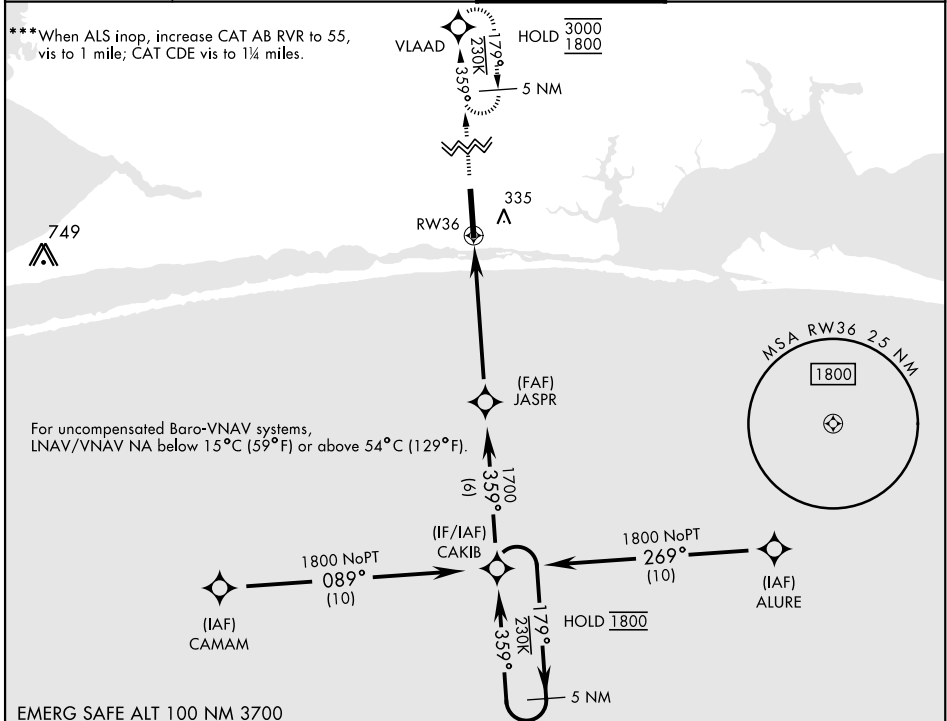
SBAS		Rwy Idg 9600	
Chan 67830	APCH CRS 359°	TDZE 37	Arpt Elev 38
W36A			

[USAF]

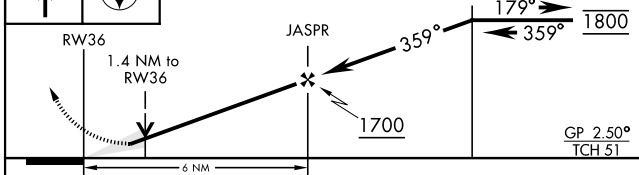
HURLBURT FLD (KHRT)

RNP APCH	ALSIF-1	MISSED APPROACH: Climb to 3000 direct VLAAD and hold.
<p>▼ * When ALS inop, increase RVR to 40, vis to ¼ mile. ** When ALS inop, increase RVR to 45, vis to ⅓ mile.</p>		

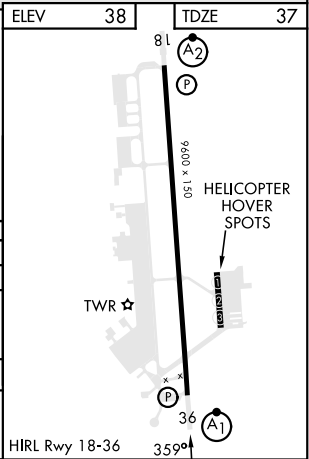
ATIS 134.475 360.675	EGLIN APP CON 125.1 281.45 (271° - 089°) 132.1 360.6 (090° - 270°)	TOWER 126.5 351.675	GND CON 123.975 275.8
--------------------------------	--	-------------------------------	---------------------------------



EMERG SAFE ALT 100 NM 3700	VLAAD	VGSI and RNAV glidepath not coincident (VGSI Angle 2.50/TCH 54).	5 NM Holding Pattern
----------------------------	-------	--	----------------------



CATEGORY	A	B	C	D	E
LPV DA *	237/24		200	(200-½)	
LNAV/VNAV DA **	327/24 290 (300-½)	338/24 301 (300-½)	346/24 309 (400-½)	357/24	320 (400-½)
LNAV MDA ***	460/24	423 (500-½)	460/40	423	(500-¾)
CIRCLING	640-1	602 (700-1)	640-1¾ (700-1¾)	840-2½ (900-2½)	840-2¾ 802 (900-2¾)



SE-3, 20 MAR 2025 to 17 APR 2025

SE-3, 20 MAR 2025 to 17 APR 2025

RNAV (GPS) RWY 36