

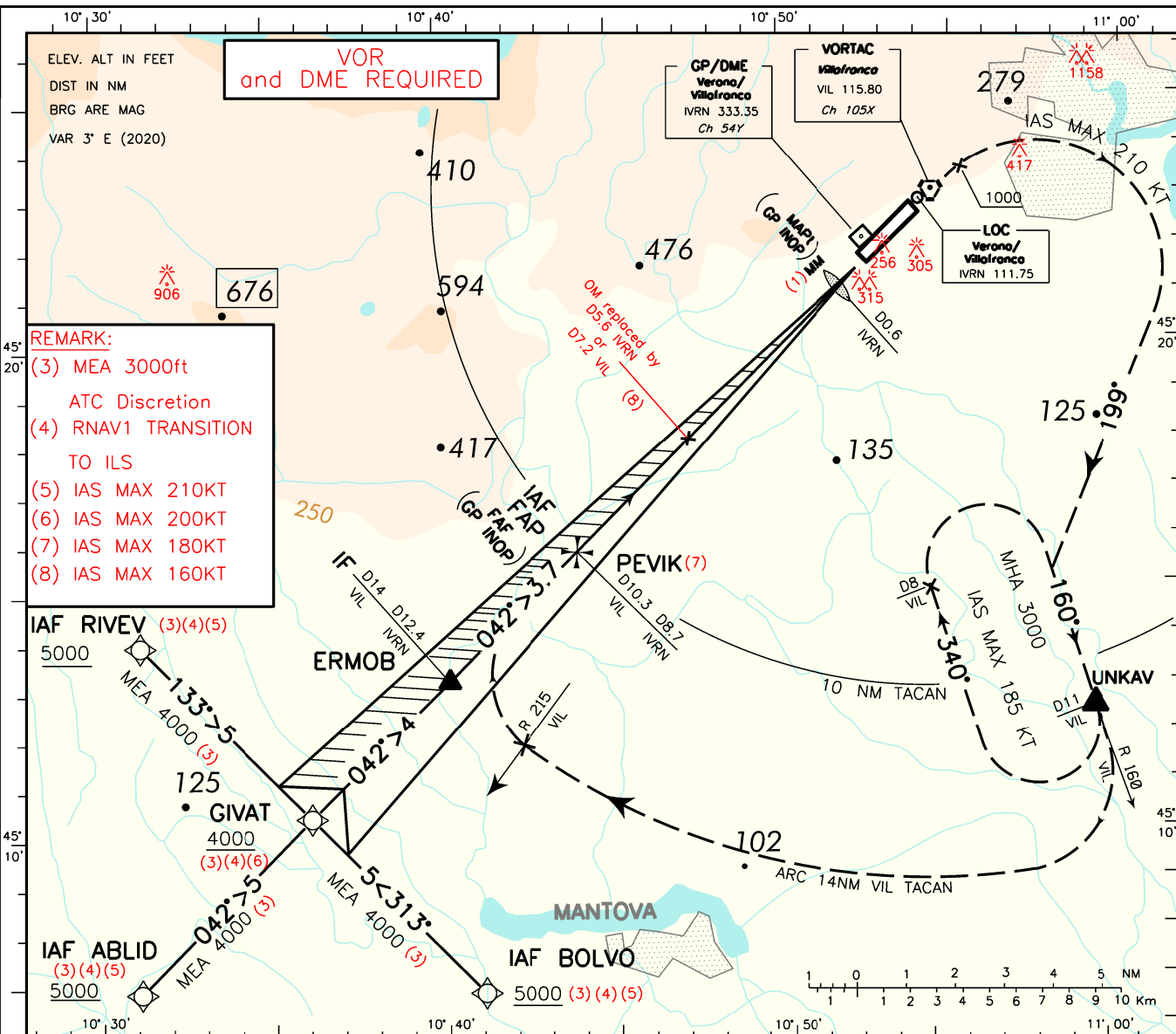
DOC.8168-ED.6-2014 AMDT 7
 CHANGE: CIRCLING CAT C MINIMA (OCA/CH) MODIFIED, CONTROLLING OBST UPDATED

INSTRUMENT APPROACH CHART - ICAO

AERODROME ELEV 240FT

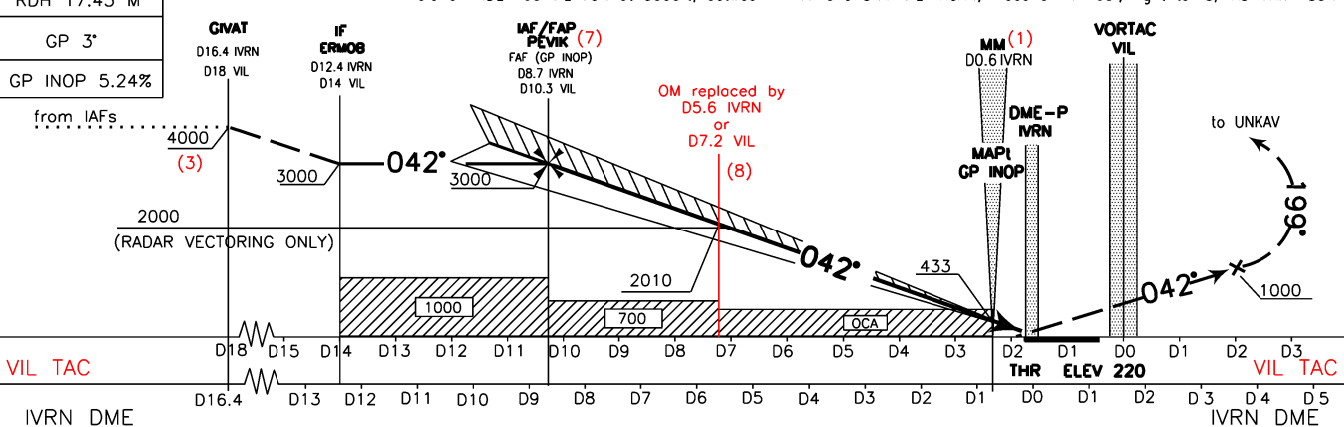
APP Milano Radar 135.900 (124.250)
TWR Villafranca TWR 118.650
ATIS Verona Arrival and Departure Information 124.130

VERONA/ VILLAGRANCA LIPX ILS or LOC RWY 04



REMARK:
 (3) MEA 3000ft
 ATC Discretion
 (4) RNAV1 TRANSITION TO ILS
 (5) IAS MAX 210KT
 (6) IAS MAX 200KT
 (7) IAS MAX 180KT
 (8) IAS MAX 160KT

TRANSITION ALT 6000 MISSED APPROACH: Maintaining final TR 042, climb to 3000 ft. Passing VIL VORTAC or 1000 ft, whichever is later, turn right TR 199° (IAS MAX 210KT) to join RDL 160 VIL VOR bound to UNKAV missed approach holding pattern. Hold on RDL 160 VIL VOR at 3000ft, between 11NM and 8NM VIL TACAN; inbound TR 160°, right turns, IAS MAX 185KT.



STRAIGHT IN APPROACH	OCA (OCH)				REMARK:	GS	FT PER MIN	DIST VIL TACAN	ALT (HGT)	MNM SECT ALT VIL	VORTAC
	A	B	C	D							
ILS CAT I	430 (210)		432 (212)	443 (223)	(1) In case of MM failure: MM replaced by D0.6 IVRN DME (433 ft) (2) Circling allowed South-East of the RWY only.	80	425	10.3 NM	3000 (2780)		
ILS CAT II Radio Altimeter only	330 (110)	341 (121)	353 (133)	367 (147)		100	530	9 NM	2590 (2370)		
GP INOP	570 (350)					120	635	7 NM	1950 (1730)		
						140	745	6 NM	1630 (1410)		
						160	850	5 NM	1310 (1090)		
CIRCLING (2)	800 (560)		970 (730)	1210 (970)		180	955	4 NM	990 (770)		
								3 NM	670 (450)		