

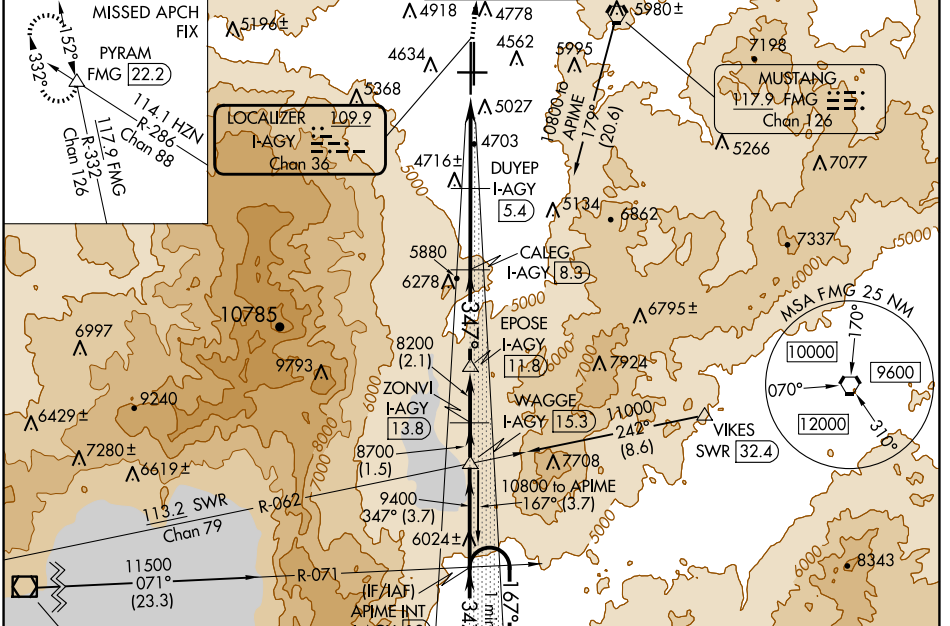
LOC/DME I-AGY 109.9 Chan 36	APP CRS 347°	Rwy Idg 10011 TDZE 4410 Apt Elev 4415
---	------------------------	--

ILS or LOC RWY 35L

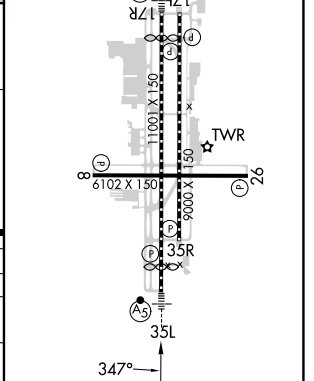
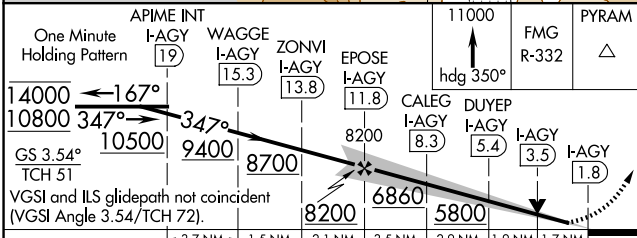
RENO/TAHOE INTL (RNO)

DME required.	MALSR	MISSED APPROACH: Climb to 11000 on heading 350° and on FMG VORTAC R-332 to PYRAM INT/FMG 22.2 DME and hold, continue climb-in-hold to 11000.
Circling Rwy 8 NA at night. Inop table does not apply.		
-13°C		

D-ATIS 135.8 363.0	NORCAL APP CON 119.2 279.55 126.3 353.9	RENO TOWER 118.7 257.8	GND CON 121.9 348.6	CLNC DEL 124.9 370.85	CPDLC
------------------------------	---	----------------------------------	-------------------------------	---------------------------------	-------



ELEV 4415	TDZE 4410
HIRL Rws 17R-35L and 17L-35R	
REIL Rws 8, 17L, 26, and 35R	
MIRL Rwy 8-26	



CATEGORY	A	B	C	D
S-ILS 35L	5062-1½ 652 (700-1½)			NA
S-LOC 35L	5120-1	710 (800-1)	5120-2 710 (800-2)	NA
CIRCLING	5340-1¼	925 (1000-1¼)	6460-3 2045 (2100-3)	NA

SW-4, 20 MAR 2025 to 17 APR 2025

SW-4, 20 MAR 2025 to 17 APR 2025