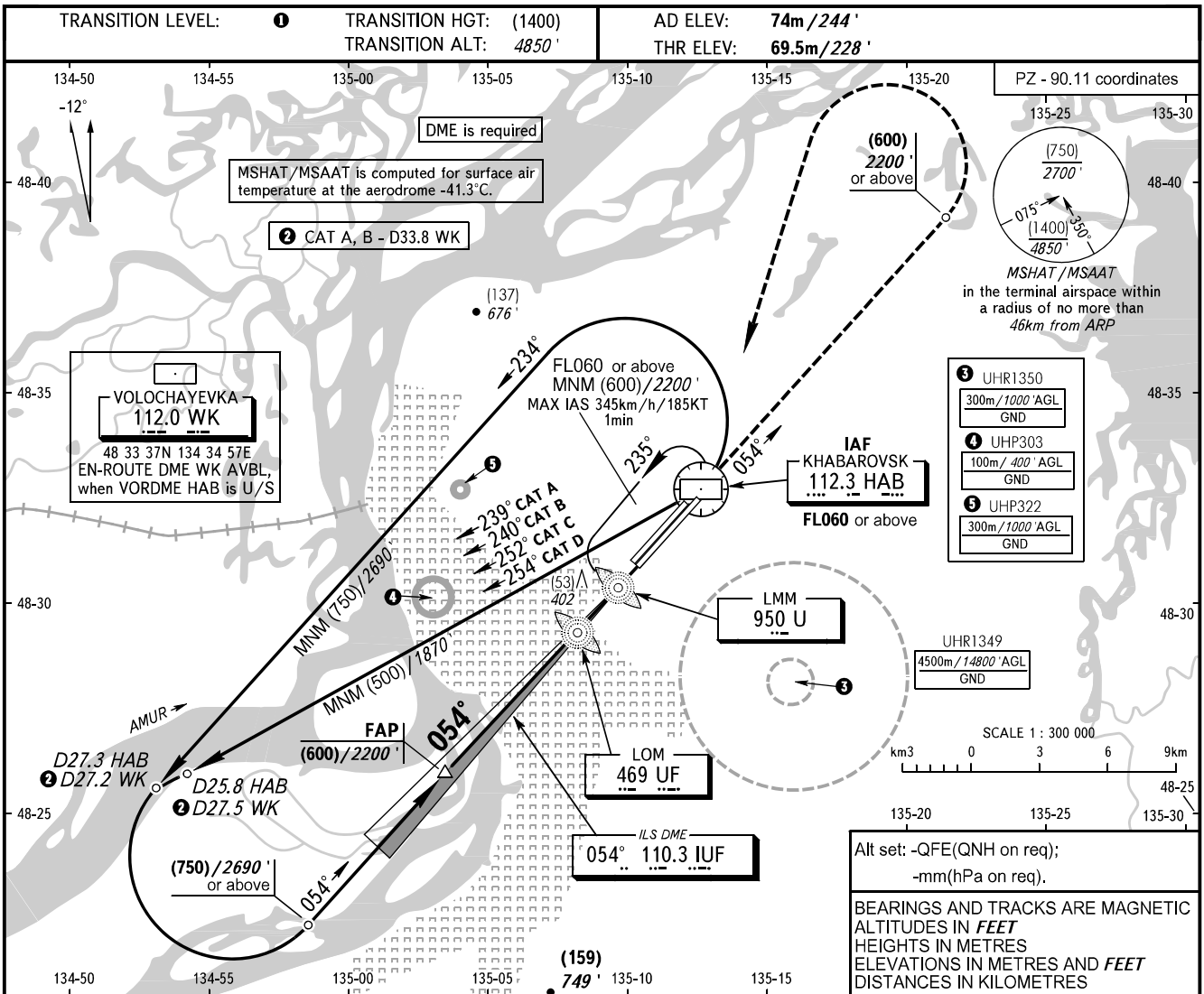


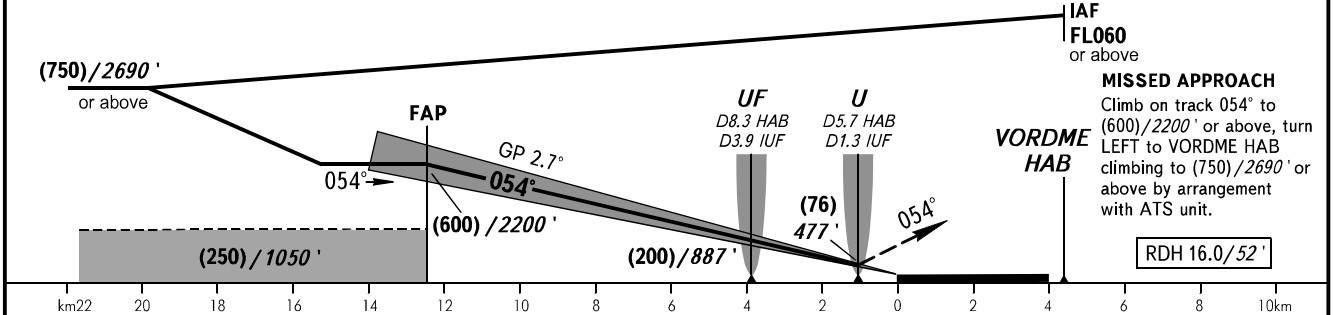
**INSTRUMENT
APPROACH
CHART - ICAO**

APPROACH	125.200
RADAR	120.300
PRECISION	119.300
GROUND	121.800 By ATC

**KHABAROVSK, RUSSIA
NOVY
ILS X CAT I RWY 05R**



DME IUF	12.0	10.0	8.0	6.0	4.0	2.0
HEIGHT / ALTITUDE	(580) / 2140'	(485) / 1830'	(395) / 1520'	(300) / 1210'	(205) / 900'	(110) / 590'



OCA(H)		A	B	C	D	TRANSITION LEVEL: - FL060 when QFE is 753mm mercury column (1004 hPa) or above; - FL070 when QFE is less than 753mm mercury column (1004 hPa). NOTE: 1. Zero range of DME IUF is indicated at RWY 05R THR. 2. Visual manoeuvring is PROHIBITED.					
Straight-in Approach	CAT I	130(60) 427'	130(60) 427'	130(60) 427'	130(60) 427'						
	GROUND SPEED	km/h	150	180	210	240	270	300	330	360	390
		kt	81	97	113	130	146	162	178	194	211
RATE OF DESCENT		m/s	2.0	2.4	2.7	3.1	3.5	3.9	4.3	4.7	5.1
		ft / min	385	463	540	617	694	771	848	925	1002

CHANGE: PROFILE VIEW