

INSTRUMENT APPROACH CHART

RJFE / FUKUE

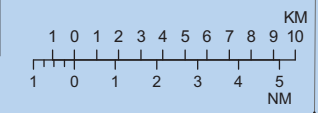
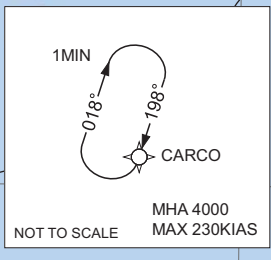
RNP RWY21

KOBE CONTROL 118.9 - 303.8 134.25 - 315.5	RNP APCH MSAS CH85668 M21A	FUKUE RADIO 118.35 AFIS provided by Fukuoka Airport Office	NO RADAR
---	----------------------------------	---	----------



CARCO	324301.73N
(IAF/MAHF)	1290247.66E
FE150	324627.07N
	1285816.73E
FE151	324758.74N
(IF)	1285432.45E
TATAR	324422.07N
(FAF)	1285228.54E
FE152	324138.23N
(MAPt)	1285054.97E
FE153	323855.49N
(MATF)	1284922.14E

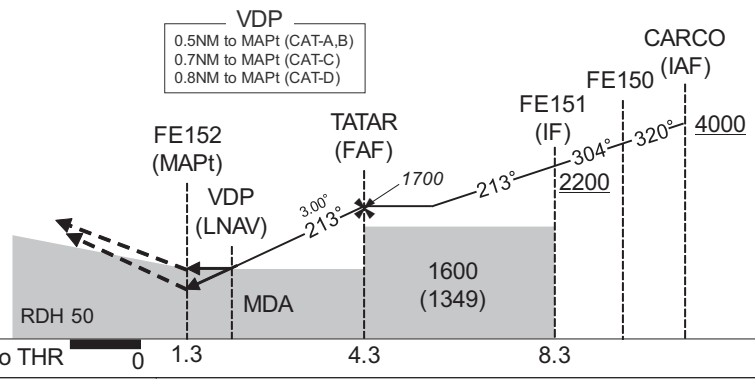
NM to Next Fix	MAPt	1	2	3	FAF
ALT (3.0°APCH Path)	-	1055	1373	1691	1700



CHANGE : Missed APCH for using VOR/DME abolished. HLDG pattern for using NAVAID abolished.

MISSED APPROACH

Direct to FE153, turn left direct to CARCO and hold at 4000FT.
Contact FUKUE RADIO.



Missed APCH climb gradient MNM 5.0%

MINIMA	THR elev. 273	AD elev. 251						
CAT	LPV		LNAV/VNAV		LNAV		CIRCLING	
	DA(H)	CMV	DA(H)	CMV	MDA(H)	CMV	MDA(H)	VIS
A	721(448)	900	880(607)	1000	880(629)	1200	880(629)	1600
B	731(458)	1200	930(657)	1400	930(679)	1400	1280(1029)	2400
C	741(468)							
D	751(478)	1600	970(697)	1800	970(719)	1800	1810(1559)	3200

Circling to WEST side of RWY only.
MINIMA with Missed APCH climb gradient of 2.5% are not established.

INSTRUMENT APPROACH CHART

RJFE / FUKUE

RNP RWY21

FAS DATA BLOCK

Operation type	0	LTP/FTP ellipsoidal height	+01140
SBAS service provider identifier	2	FPAP latitude	323929.3105N
Airport identifier	RJFE	FPAP longitude	1284941.4435E
Runway	21	Threshold crossing height	00015.0
Approach performance designator	0	TCH units selector	1
Route indicator		Glide path angle	03.00
Reference path data selector	0	Course width at threshold	105.00
Reference path ID	M21A	∠ length offset	0000
LTP/FTP latitude	324027.7825N	HAL	40.0
LTP/FTP longitude	1285014.8040E	VAL	50.0
CRC remainder	7B7068FB		

Required additional data

LTP/FTP orthometric height	82.9
----------------------------	------

CHANGE : Description of FAS DATA BLOCK ITEM(CRC remainder).