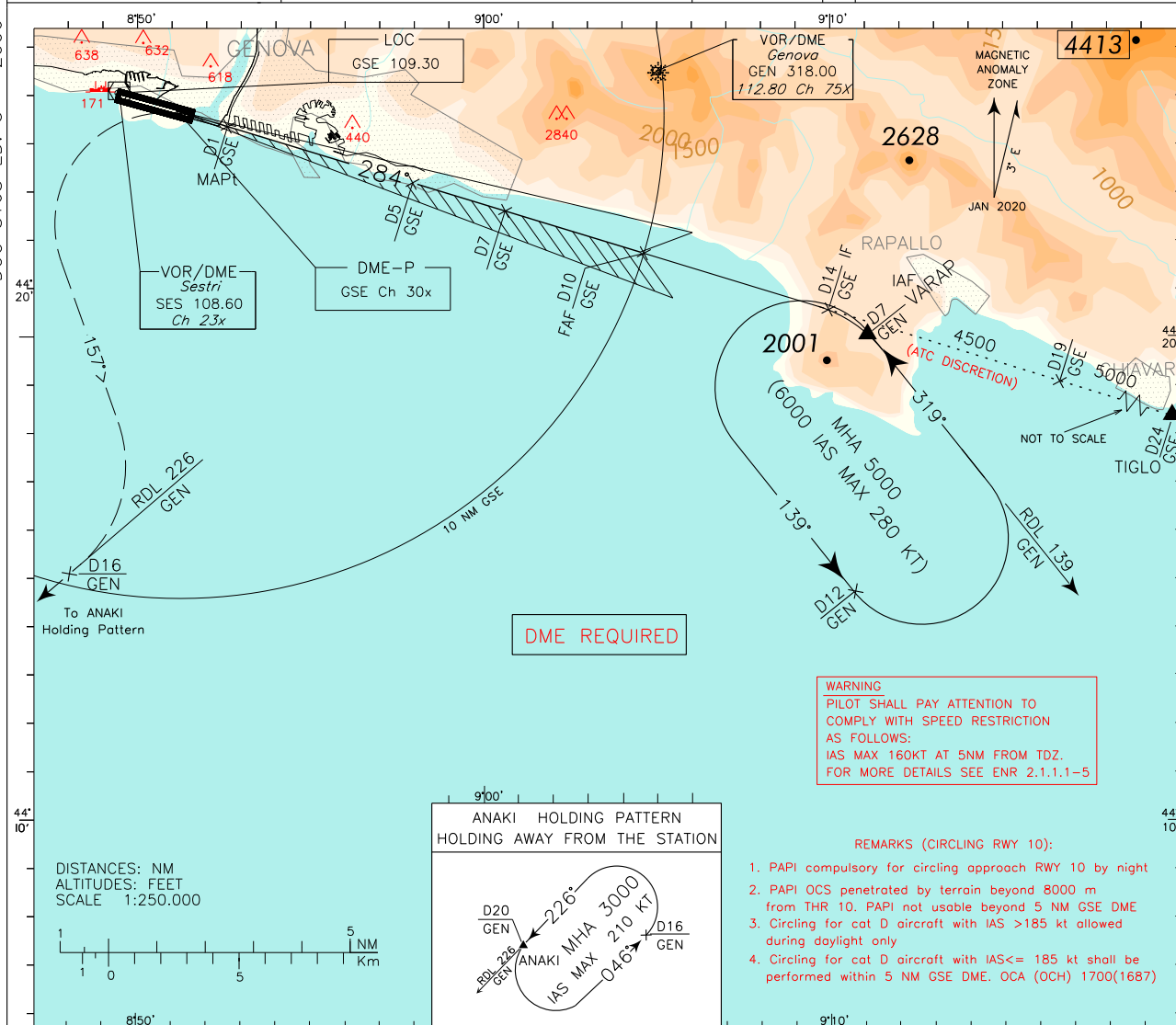
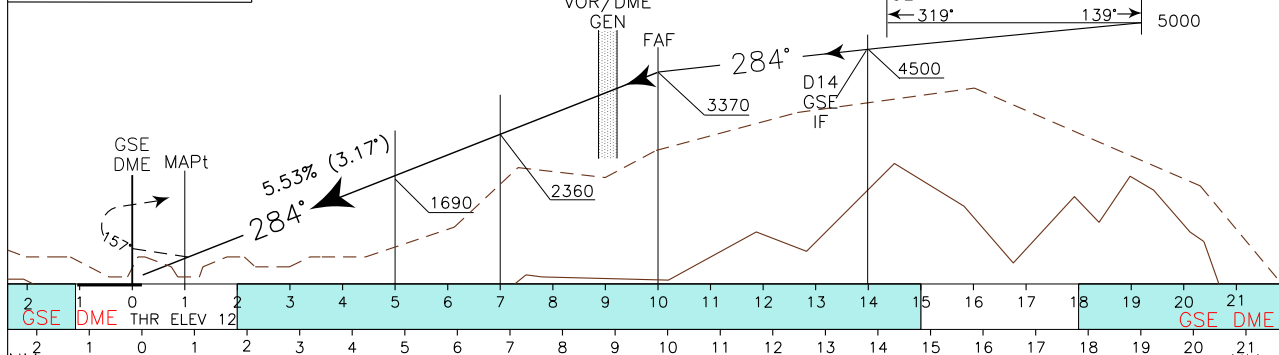


ICAO – INSTRUMENT APPROACH CHART

<p>WARNING: The LOC course is off-set 1.52° South from RCL</p>	APP Genova APP	119.600	AD ELEV	L	<p>GENOVA/SESTRI LOC – Y RWY 28</p>
	Genova Radar	119.600 (119.850)	13	M	
	TWR Genova TWR	118.600	J		
	ATIS Genova Terminal Information	122.830			



TRANSITION	ALT 7000	<p>MISSED APPROACH: On MAPt turn left as soon as practicable (IAS MAX 200 kt) on heading 157° to join and follow RDL 226 GEN VOR/DME (TR 226°) climbing to 3000 ft and proceed to ANAKI (RDL 226/20 NM GEN VOR/DME) holding pattern.</p>
LOCDME	5.53%	



STRAIGHT IN APPROACH	OCA (OCH)				SEE REMARKS 1, 2, 3 and 4 CIRCLING NOT ALLOWED allowed only south of the RWY	GS	FT PER MIN	D5-MAPT		MAPt-THR		DME GSE	ALT (HGT)		MSA 25NM GEN VOR	
	A	B	C	D				4 NM	0.82 NM	10	9		8	7		6
CIRCLING	790(777)	1360(1347)	3020(3007) (3) (4)			180	1008	1: 20	0: 16			10	3370 (3357)	9	3030 (3017)	
						140	784	1: 43	0: 21			8	2700 (2687)	7	2360 (2347)	
						120	672	2: 00	0: 25			6	2030 (2017)	5	1690 (1677)	
						100	560	2: 24	0: 30			4	1360 (1347)	3	1020 (1007)	
						80	448	3: 00	0: 37			3				